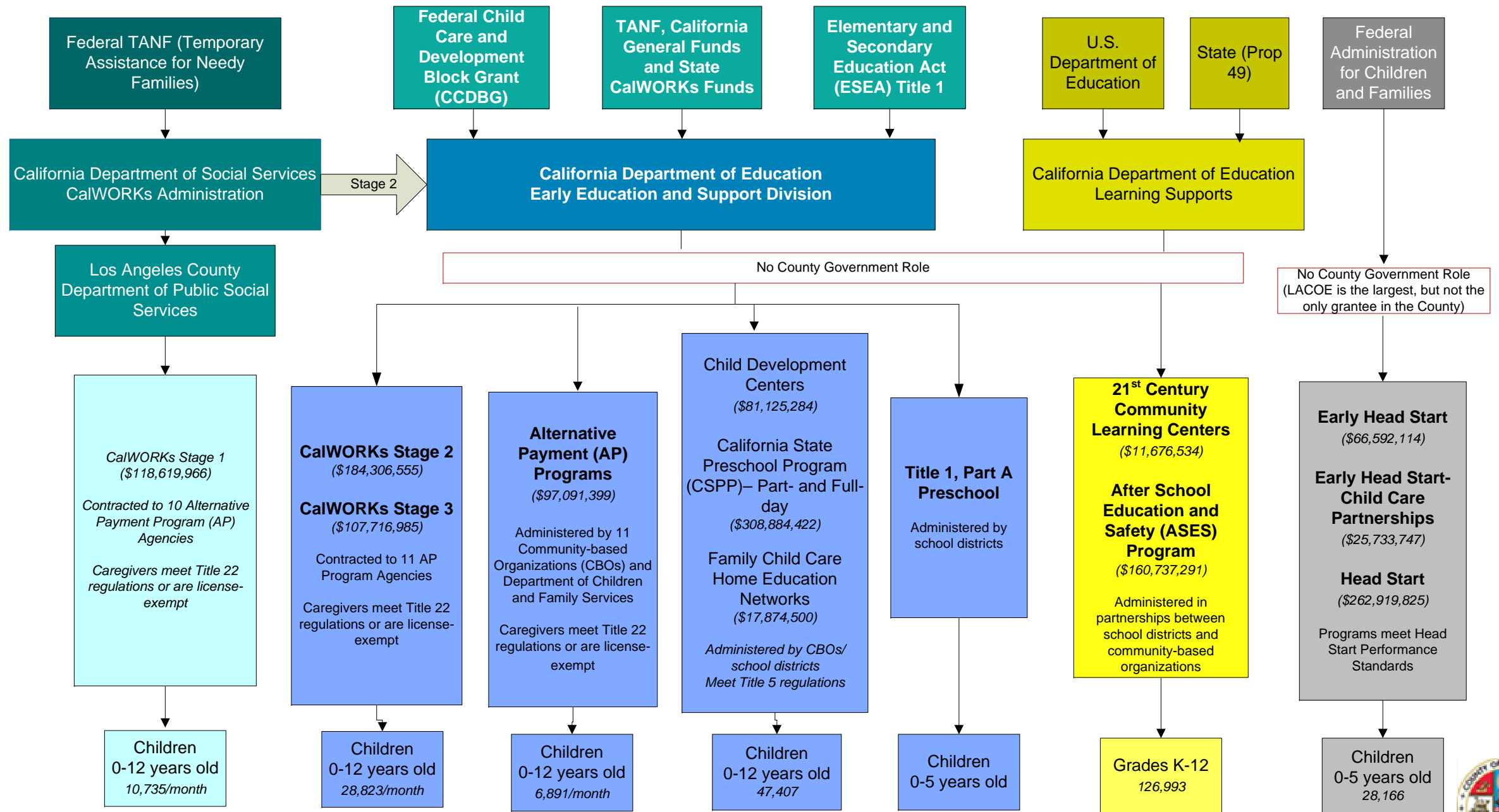
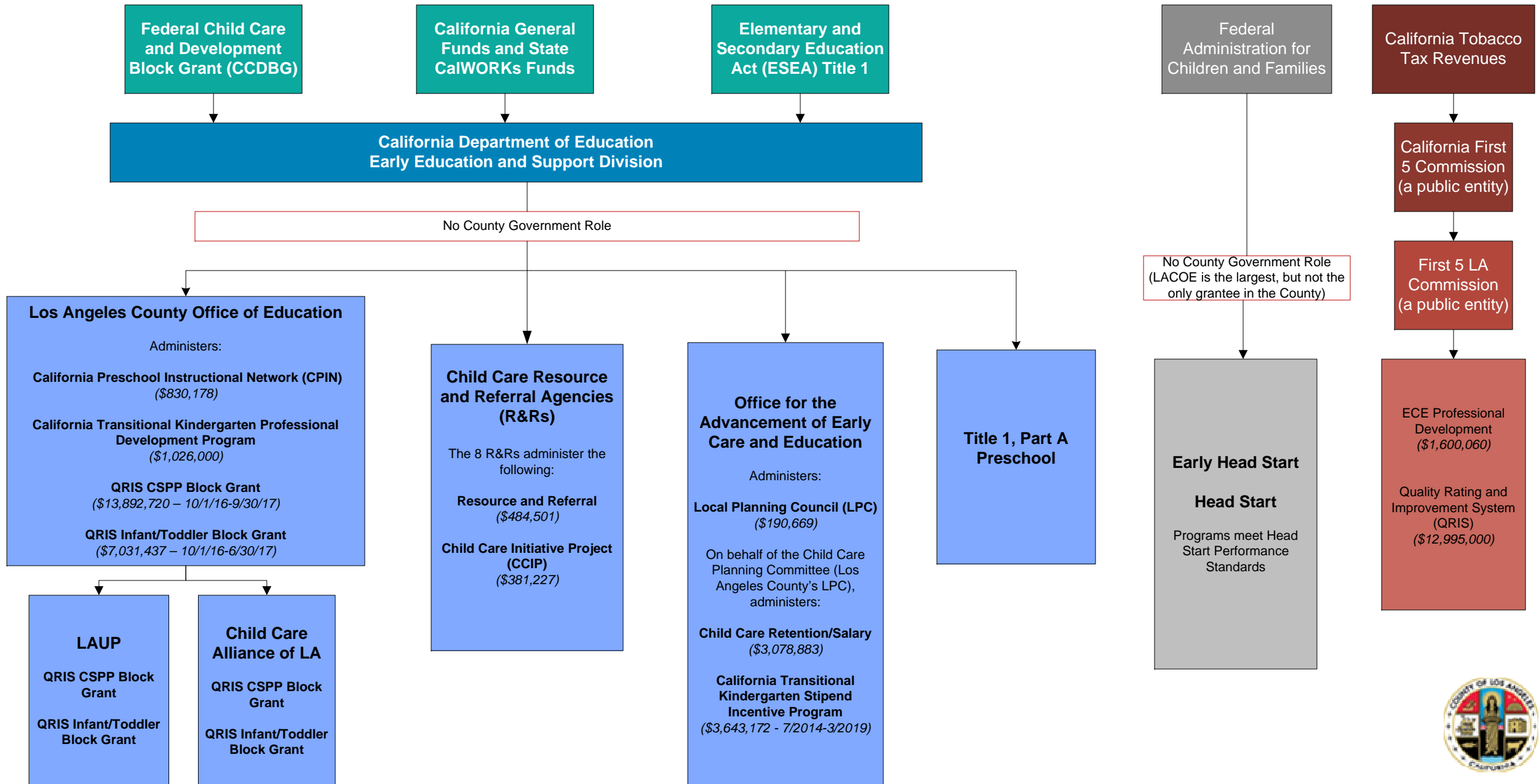


**Public Investments for Early Care and Education  
Direct Services in Los Angeles County for Fiscal Year 2016-17**





**Public Investments for Early Care and Education**  
**Direct Services and Quality Enhancements in Los Angeles County for Fiscal Year 2016-17**

Data Sources and Notes

**Direct Services**

---

**CalWORKs Stages 1-3 Child Care**

- The funding allocation for 2016-17 and the numbers of children served representing a moment in time (May 2017) was provided by the Child Care Alliance of Los Angeles in response to an e-mail request on July 20, 2017.

**California Department of Education, Early Education and Support Division (CDE/EESD)**

- Funding allocations derived from CDE/EESD CATS Report, special run prepared on behalf of the Local Child Care and Development Planning Councils, September 22, 2016.
- *Alternative Payment Program Agencies* – The funding allocation for 2016-17 and the numbers of children served representing a moment in time (May 2017) was provided by the Child Care Alliance of Los Angeles in response to an e-mail request on July 20, 2017.
- *Child Development Centers* – Funding allocation for this program type also reflects the proportion of funds seven CDE-contracted organizations assign to their respective Family Child Care Home Education Network (see next note).
- *Family Child Care Home Education Networks (FCCHENs)* – Of the 20 organizations that sponsor FCCHENs, 10 hold direct FCCHEN contracts with the CDE/EESD. The remaining three allocate their entire center-based contract to a FCCHEN, while seven allocate a portion of their center-based contract to the FCCHEN. As such, the allocation listed for the FCCHENs reflects only those 10 organizations holding a direct FCCHEN contract.
- Total number of children served with CDE/EESD funding retrieved from the annual survey conducted by the LA ECE Data Collaborative (Los Angeles County Office of Education (LACOE) Head Start-State Preschool and the Office for the Advancement of Early Care and Education) in Winter/Spring 2017. Breakdown is as follows:

Ages of Children	Part-day	Full-day	Total
Infants and Toddlers	211	5,646	5,857
Preschoolers	21,108	19,236	40,344
School Age			3,737

\*Of the 21,060 children enrolled in a program holding a CDE contract for part-day CSPP, 3,070 children receive full-day services through a Head Start partnership.

**California Department of Education, Learning Supports**

- *21<sup>st</sup> Century Community Learning Centers (CLCs)* – Funding allocations for FY 2016-17 to school districts located in Los Angeles County retrieved on June 29, 2017 from [www.cde.ca.gov/fg/fo/r27/cclc16results.asp](http://www.cde.ca.gov/fg/fo/r27/cclc16results.asp).



- *After School Education and Safety (ASES) Program* – Funding allocations for FY 2016-17 to school districts located in Los Angeles County retrieved on June 29, 2017 from [www.cde.ca.gov/fg/fo/r27/ases16intent.asp](http://www.cde.ca.gov/fg/fo/r27/ases16intent.asp).
- Numbers of school age children up to 8<sup>th</sup> grade served by 21<sup>st</sup> Century CLCs and ASES for FY 2016-17 by school districts retrieved from [www.afterschoolnetwork.org/afterschool-programs-database](http://www.afterschoolnetwork.org/afterschool-programs-database).

### Early Head Start and Head Start

- Represents Fiscal Year 2017 funding allocations in the aggregate for Early Head Start, Early Head Start-Child Care Partnerships and Head Start to organizations serving children and their families in Los Angeles County. Provided via e-mail by U.S. Department of Health and Human Services (DHHS) Administration of Children & Families (ACF), Region IX, August 29, 2017.
- Total number of children served by Early Head Start and Head Start from the annual survey conducted by the LA ECE Data Collaborative in Winter/Spring 2017. Breakdown is as follows:

Program Type	Home-based	Part-day	Full-day	Total
Early Head Start	3,460	186	1,709	5,355
Head Start	1,078	17,129	4,604*	22,811

\*Of the 4,064 children receiving full-day services, 3,070 of the children are benefiting from the partnering of Head Start with State Preschool.

\*\*Of the 1,709 enrolled in Early Head Start, 1,303 children benefit from an overlay of services provided through the Early Head Start-Child Care Partnership

### Quality Enhancements

#### Child Care Resource and Referral Agencies (R&Rs) –

- *Resource and Referral* funding allocations derived from CDE/EESD CATS Report, special run prepared on behalf of the Local Child Care and Development Planning Councils, September 22, 2016.
- *Child Care Initiative Project (CCIP)* allocations for 2016-17 to R&Rs in Los Angeles County as reported by the Child Care Alliance of Los Angeles in an e-mail message on August 3, 2017.

**First 5 LA** – Data provided by First 5 LA staff via e-mail exchanges in July 2017.

#### Los Angeles County Office of Education (LACOE) –

- *California Preschool Instructional Network (CPIN) and California Transitional Kindergarten Professional Development Program CTKPD)* funding allocations provided by staff of the Early Learning Support Unit via e-mail on July 11, 2017.
- *QRIS CSPP and Infant/Toddler Block Grants* funding allocations provided by staff to Quality Start Los Angeles via e-mail on July 20, 2017. LACOE, as the Local Education Agency (LEA), receives the funds and is responsible for administrative oversight, county outreach, and program monitoring and evaluation of the contracts.

**Office for the Advancement of Early Care and Education** – Represents funding allocations through the respective contracts – Local Child Care and Development Planning Council and Child Care Retention/Salary – and California Transitional Kindergarten Stipend Incentive Program grant award between the CDE and the Los Angeles County Board of Supervisors.