



**Wednesday, March 6, 2019 • 12:00 p.m. – 2:00 p.m.**

Pacific Oaks College  
55 Eureka Street, Classrooms 40-41  
Pasadena, CA 91103

**AGENDA**

- |             |  |                    |   |
|-------------|--|--------------------|---|
| 1.<br>12:00 | Welcome and Introductions<br>▪ Opening Statement and Comments by the Chair   |                    | Nellie Ríos-Parra, Chair  |
| 2.<br>12:10 | Approval of Minutes<br>▪ February 6, 2019  | <b>Action Item</b> | Julie Taren, Vice Chair   |
| 3.<br>12:15 | LPC Local Funding Priorities   | <b>Action Item</b> | Michele Sartell, Staff  |
| 4.<br>12:40 | Public Policy Report<br>▪ Priority Legislation   |                    | Michele Sartell   |
| 5.<br>1:00  | Strategic Planning Update<br>▪ Review of Proposed Strategic Plan Principles<br>- What do you like about the principles?<br>- What is missing?<br>- How do we advance the principles? |                    | Michele Sartell & Dianne Philibosian                                |
| 6.<br>1:45  | Launch of Membership for FY 2019-20  |                    | La Tanga Hardy & Selma Sanchez, Co-chairs,<br>Governance Work Group |
| 7.<br>1:50  | Announcements and Public Comment   |                    | Julie Taren   |
| 8.          | Call to Adjourn  |                    | Nellie Ríos-Parra   |

**Next Meeting**

Wednesday, April 3, 2019 • 12:00 – 2:00 p.m.  
Educare Los Angeles at Long Beach  
4840 Lemon Avenue  
Long Beach, CA 90807

**MISSION STATEMENT**

*The mission of the Child Care Planning Committee is to engage parents, child care providers, allied organizations, community, and public agencies in collaborative planning efforts to improve the overall child care infrastructure of Los Angeles County, including the quality and continuity, affordability, and accessibility of child care and development services for all families.*

This page intentionally blank.



**Meeting Minutes – February 6, 2019**

Members in Attendance (29)				
Parents	ECE Program	Community Agency	Public Agencies	Discretionary
Alejandra Berrio	Tonya Burns	Terri Johnson for Norma Amezcua	Ranae Amezcua	Christina Acosta
Rosa Alvarez for Jessica Chang	Lindsey Evans	Mallika Bhandarkar	Christine Tortorici for Theresa Figueras	Toni Isaacs
Mona Franco	Monica Barahona for Andrea Joseph	Joyce Robinson	Angela Gray	Kelly O'Connell <i>1<sup>st</sup> Supervisorial District</i>
Judith Sanchez for Tara Henriquez	Valerie Marquez	Ancelma Sanchez	Daniel Orosco	Crystal O'Grady for Dianne Philibosian <i>5<sup>th</sup> Supervisorial District</i>
Nellie Ríos-Parra	Wendy Tseng for JoAnn Shalhoub-Mejia	Kathy Schreiner	Laurel Parker	Kelly Meyers-Wagner for Michael Shannon
Ernesto Saldaña	Andrea Sulsona			Julie Taren <i>3<sup>rd</sup> Supervisorial District</i>
	Delia Vicente			

**Guests and Alternates:** Alejandra Albarran Moses – Long Beach Department of Health and Human Services, Rocio Bach – The Children’s Collective, Sue Baker – Alternative for Andrea Sulsona, Telma Bayona – Compton Unified School District, Rebecca Bernard – Woodcraft Rangers, Judy Cashell – Pacific Clinics Head Start, Debra Colman – First 5 LA, David Diaz – Kids 1<sup>st</sup> Learning Center, Sally Durbin – Teaching at the Beginning, Inc., Eileen Friscia – Child Care Resource Center, Mark Funston – Lakeshore, Ilona Gergi – Culver City Unified School District, Tinatra Glaspie – Learning Care Group/La Petite Academy, Maura Harrington – Center for Nonprofit Management, Verrionica Herrera – St. Anne’s, Shoghig Khadarian – California Department of Social Services/Community Care Licensing Division, Jermaine Kyle – The Children’s Collective, Deborah Lawrence – Rosemead School District, Nicole Lopez – Little Tokyo Service Center, Christina Moore – Maryvale, Deborah Paratore – St. Anne’s, Magdalena Pereyra – Alternate for Delia Vicente, Erica Otiono – California Department of Education/Early Learning and Care Division, Cynthia Renteria – Child Care Resource Center, Fernando Reyes – The Children’s Collective, Gina Rodriguez – First 5 LA, Cynthia Saenz – Kids 1<sup>st</sup> Learning Centers, D. Sangani – Wonderland School, Sachin Snagani – Wonderland School, Doraine Thefford – Child Care Resource Center, Ruth Tiscareño – Department of Mental Health Parent Advocate/SPA 7, and Damian Zavola – Training and Research Foundation

**Staff:** Michele Sartell

**I. Welcome and Introductions**

Nellie Ríos-Parra, Chair, opened the Child Care Planning Committee (Planning Committee) meeting at 12:01 p.m. She welcomed members and guests after reading the opening statement and asked Lindsey Evans to read the mission statement. She then asked meeting participants to make self-introductions.



Nellie reviewed the agenda for the meeting. Next, she introduced Erica Otono, Child Development Consultant with the California Department of Education/Early Learning and Care Division (CDE/ELCD). Nellie mentioned Erica's support in helping guide the Lennox School District's early learning programs to excellence in quality in the best interests of children and families. Erica thanked Nellie for her kind words and then provided a brief introduction into the current work of CDE/ELCD, which includes the recent completion their strategic plan. Going forward, CDE/ELCD will be focused on collaborative work with local communities.

## **II. Approval of Minutes**

Julie Taren, Vice Chair, reviewed the minutes from January 17, 2019 and then asked for a motion to approve.

*Laurel Parker made the motion to approve the minutes; the motion was seconded by Ernesto Saldaña. The motion on the minutes passed with abstentions from Tonya Burns, Lindsey Evans, Toni Isaacs, Kelly O'Connell, and Ancelma Sanchez.*

## **III. Local Child Care and Development Planning Council Update**

Michele Sartell, staff, directed meeting participants to the PowerPoint summarizing the CDE/ELCD's Preschool Development Proposal to the U.S. Department of Health and Human Services, Office for the Administration for Children and Families. The CDE/ELCD was awarded \$10.5 million of their original \$15 million request. The 15-month grant period is from March 1, 2019 through June 30, 2020. The purpose is to support states' analysis of the current early care and education landscape and use the analysis to implement systems change. The five required activities include: develop a statewide needs assessment, create a detailed and innovative strategic plan, expand dramatically family access to information, share best practices, and improve quality.

The grant specifies the role of the local child care and development planning councils (LPCs) to support three areas of work: needs assessment, strategic planning, and maximizing parental knowledge. The American Institutes for Research will serve as lead. LPC contracts for 2019-20 will be augmented with funding strengthen community partners and address issues that limit parent access through community forums. The augmentation of \$1.2 million statewide must be fully spent between July 1<sup>st</sup> and December 31<sup>st</sup>, 2019. Michele indicated that more information should be forthcoming to help the LPCs plan for the work prior to the start date.

## **IV. Announcements and Public Comment**

- Long Beach Early Childhood Education Committee will be holding its annual Early Learning Symposium on March 30, 2019. The theme is "Building Resiliency in Family and Community". More information is available on their website at <http://lbece.org/>.

## **V. Adjournment**

*The meeting was adjourned at 12:45 p.m. to accommodate the Public Hearing on the LPC Local Funding Priorities scheduled to begin at 12:50 p.m.*

# Local Child Care and Development Planning Council Funding Priority Setting Process for State Child Care and Preschool Funds

Los Angeles County Child Care Planning Committee  
March 6, 2019



---

---

---

---

---

---

---

---

## DATA SOURCES

- American Institutes for Research – Early Learning Needs Assessment Tool\*
  - ‡ Contract through the California Child Care Coordinators Association
  - ‡ Multiple sources: California Child Care Resource and Referral Network, California Department of Education, California Department of Public Health, the American Community Survey PUMS data, and an AIR-administered survey of Head Start programs

\* Sources listed at [www.ehnedassessment.org](http://www.ehnedassessment.org). Access only allowed to organizations that hold a contract with AIR.



2

---

---

---

---

---

---

---

---

## PRIORITY SETTING

- Data analyzed using Priority 1, 2 and 3 number and percent thresholds and methodology
- Methodology depends on County size – Los Angeles County uses methodology for counties with over five million residents
- ... and contract type, e.g. center – infants and toddlers (CCTR), California State Preschool (CSPP), center – school age (CCTR)



3

---

---

---

---

---

---

---

---

**PRIORITY SETTING – All Program Types**

**Priority 1:** Zip code qualifies when there are 50% or more eligible children unserved AND more than 1,500 eligible children unserved

**Priority 2:** Zip code qualifies when there are 50% or more eligible children unserved AND more than 750 eligible children unserved

**Priority 3:** Zip code qualifies when there are 50% or more eligible children unserved AND more than 500 eligible children unserved



4

---

---

---

---

---

---

---

---

---

---

**PRIORITY 3 OPTIONS**

**Option 1:** A zip code qualifies as Priority 3 when there are 50% or more eligible children underserved and there are more than 500 children underserved.

**Option 2:** All other zip codes in the county.

**Option 3:** No other zip codes in the county.

\* Management Bulletin 15-04, Revised Local Child Care and Development Planning Council Funding Priority Setting Process, June 2015. Retrieved from <https://www.cde.ca.gov/sp/d/c/l/mb1504.asp>



5

---

---

---

---

---

---

---

---

---

---

**TIMELINE**

**February 6<sup>th</sup>** – Public review and comment

**February 11<sup>th</sup>** – Deadline for submitting written comments

**March 6<sup>th</sup>** – Child Care Planning Committee review and approval

**March** – Approval of County Superintendent of Schools

**February – early April** – Submit to County process for approval by Board of Supervisors

**April 16** – Board of Supervisors meeting agenda for approval

**May 30<sup>th</sup>** – due to California Department of Education



6

---

---

---

---

---

---

---

---

---

---

**PUBLIC HEARING FINDINGS**

- Potential under-representation of the need for infant and toddler care – does not align with experiences in the field.
- Demographic shifts and decline in birth rates might explain the lack of priority 1 assignments for infants and toddlers.
- How does the data account for families reticent to enroll their families? Notable that birth to five population has been under-counted in census.
- The methodology for Los Angeles County maintains a different threshold for priority assignments – what does it look like and is there advocacy required to ensure that the vast need for services is accurately represented compared to other counties?



7

---

---

---

---

---

---

---

---

---

---

**OVERVIEW OF FINDINGS**

	Child Care and Development Programs Full-Day Infant and Toddler Services				State Preschool Programs Full- and Part-Day Services			
	Priority Rating				Priority Rating			
	1	2	3	3*	1	2	3	3*
SPA 1	2	4	1	4	1	3	1	8
SPA 2	2	10	12	42	0	4	4	56
SPA 3	4	13	18	12	0	2	5	38
SPA 4	4	12	7	7	0	1	4	25
SPA 5	0	1	4	16	0	0	0	25
SPA 6	12	8	0	1	0	11	1	7
SPA 7	8	4	5	16	0	8	2	20
SPA 8	4	15	4	16	1	1	3	35
<b>Totals</b>	<b>36</b>	<b>67</b>	<b>51</b>	<b>114</b>	<b>2</b>	<b>30</b>	<b>20</b>	<b>214</b>



8

---

---

---

---

---

---

---

---

---

---

**OVERVIEW OF FINDINGS**

	Child Care and Development Programs School Age Children			
	Priority Rating			
	1	2	3	3*
SPA 1	6	1	1	5
SPA 2	31	16	7	11
SPA 3	17	18	8	6
SPA 4	20	5	3	3
SPA 5	1	6	6	13
SPA 6	20	0	0	1
SPA 7	20	10	2	0
SPA 8	19	10	7	5
<b>Totals</b>	<b>134</b>	<b>66</b>	<b>34</b>	<b>44</b>



9

---

---

---

---

---

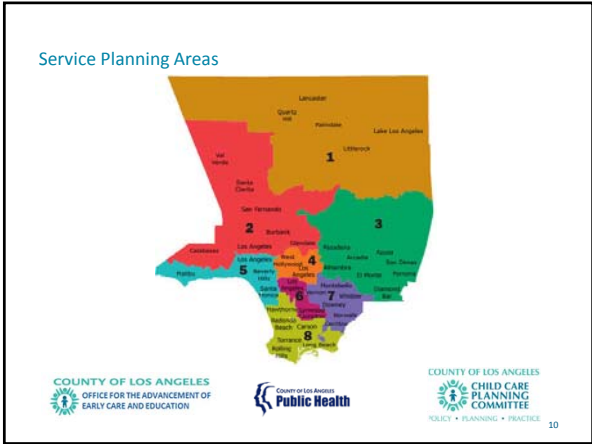
---

---

---

---

---




---

---

---

---

---

---

---

---

---

---

QUESTIONS? COMMENTS...

Michele P. Sartell  
 Child Care Planning Coordinator  
[msartell@ph.lacounty.gov](mailto:msartell@ph.lacounty.gov)  
 (213) 639-6239

COUNTY OF LOS ANGELES OFFICE FOR THE ADVANCEMENT OF EARLY CARE AND EDUCATION

COUNTY OF LOS ANGELES Public Health

COUNTY OF LOS ANGELES CHILD CARE PLANNING COMMITTEE POLICY • PLANNING • PRACTICE

11

---

---

---

---

---

---

---

---

---

---



**Los Angeles County General Child Care and Development Program (CCTR) Priorities  
Full-Day Infant and Toddler Services  
Fiscal Year 2018-19**

<b>Service Planning Area (SPA) 1</b>		
<b>County Number</b>	<b>Zip Code</b>	<b>LPC Priority</b>
19	93243	3*
19	93510	3*
19	93534	3
19	93535	2
19	93536	2
19	93543	3*
19	93550	1
19	93551	1
19	93552	2
19	93560	2
19	93591	3*

<b>Service Planning Area (SPA) 2</b>		
<b>County Number</b>	<b>Zip Code</b>	<b>LPC Priority</b>
19	91011	3*
19	91020	3*
19	91040	3*
19	91042	3*
19	91201	3*
19	91202	3*
19	91203	3*
19	91204	3*
19	91205	3
19	91206	3
19	91207	3*
19	91208	3*
19	91214	3*
19	91301	3*
19	91302	3*
19	91303	3
19	91304	3
19	91306	2
19	91307	3*
19	91311	3*
19	91316	3*
19	91321	3*
19	91324	3*
19	91325	3*
19	91326	3*

Service Planning Area (SPA) 2 Continued		
County Number	Zip Code	LPC Priority
19	91330	3*
19	91331	1
19	91335	2
19	91340	3*
19	91342	2
19	91343	2
19	91344	2
19	91345	3*
19	91350	3
19	91351	3*
19	91352	3
19	91354	3
19	91355	3
19	91356	3*
19	91361	3*
19	91362	3*
19	91364	3
19	91367	2
19	91381	3*
19	91384	3*
19	91387	3
19	91390	3*
19	91401	2
19	91402	1
19	91403	3*
19	91405	2
19	91406	2
19	91411	3
19	91423	3*
19	91436	3*
19	91501	3*
19	91502	3*
19	91504	3*
19	91505	3*
19	91506	3*
19	91601	3*
19	91602	3*
19	91604	3*
19	91605	2
19	91606	3
19	91607	3*

Service Planning Area (SPA) 3		
County Number	Zip Code	LPC Priority
19	91001	3*
19	91006	3
19	91007	3
19	91008	3*
19	91010	3
19	91016	3
19	91024	3*
19	91030	3*
19	91101	3*
19	91103	3
19	91104	3
19	91105	3*
19	91106	3
19	91107	3
19	91108	3*
19	91702	2
19	91706	1
19	91711	3
19	91722	3
19	91723	3*
19	91724	3*
19	91731	3
19	91732	2
19	91733	2
19	91740	3*
19	91741	3*
19	91744	1
19	91745	3
19	91746	3
19	91748	2
19	91750	3
19	91754	2
19	91755	2
19	91765	2
19	91766	1
19	91767	2
19	91768	2
19	91770	1
19	91773	3
19	91775	3*
19	91776	2
19	91780	3
19	91789	2

Service Planning Area (SPA) 3 Continued		
County Number	Zip Code	LPC Priority
19	91790	2
19	91791	2
19	91792	3
19	91801	3
19	91803	3*

Service Planning Area (SPA) 4		
County Number	Zip Code	LPC Priority
19	90004	1
19	90005	2
19	90006	1
19	90010	3*
19	90012	2
19	90013	3*
19	90014	3*
19	90015	3
19	90017	3
19	90019	2
19	90020	2
19	90021	3*
19	90023	2
19	90026	1
19	90027	2
19	90028	3
19	90029	3
19	90031	2
19	90032	2
19	90033	2
19	90036	3
19	90038	3
19	90039	3
19	90041	2
19	90042	1
19	90046	3*
19	90048	3*
19	90057	2
19	90065	2
19	90068	3*

Service Plannin Area (SPA) 5		
County Number	Zip Code	LPC Priority
19	90024	3
19	90025	3

Service Plannin Area (SPA) 5 Continued		
County Number	Zip Code	LPC Priority
19	90034	2
19	90035	3
19	90045	3*
19	90049	3*
19	90056	3*
19	90064	3*
19	90066	3
19	90067	3*
19	90077	3*
19	90094	3*
19	90210	3*
19	90230	3*
19	90232	3*
19	90265	3*
19	90272	3*
19	90291	3*
19	90292	3*
19	90293	3*
19	90402	3*

Service Planning Area (SPA) 6		
County Number	Zip Code	LPC Priority
19	90001	1
19	90002	1
19	90003	1
19	90007	2
19	90008	2
19	90011	1
19	90016	2
19	90018	2
19	90037	1
19	90043	2
19	90044	1
19	90047	1
19	90059	1
19	90061	2
19	90062	2
19	90089	3*
19	90220	1
19	90221	1
19	90222	2
19	90262	1
19	90723	1

<b>Service Planning Area (SPA) 7</b>		
<b>County Number</b>	<b>Zip Code</b>	<b>LPC Priority</b>
19	90022	1
19	90040	3*
19	90058	3*
19	90063	1
19	90201	1
19	90240	3*
19	90241	3
19	90242	3
19	90255	1
19	90270	2
19	90280	1
19	90601	3*
19	90602	3*
19	90603	3*
19	90604	3
19	90605	3
19	90606	3*
19	90623	3*
19	90630	3*
19	90631	2
19	90638	2
19	90640	1
19	90650	2
19	90660	1
19	90670	3*
19	90701	3*
19	90703	3
19	90706	1
19	90712	3*
19	90713	3*
19	90715	3*
19	90716	3*
19	90755	3*

<b>Service Planning Area (SPA) 8</b>		
<b>County Number</b>	<b>Zip Code</b>	<b>LPC Priority</b>
19	90245	3*
19	90247	1
19	90248	3*
19	90249	2
19	90250	1
19	90254	3*
19	90260	2

Service Planning Area (SPA) 8 Continued		
County Number	Zip Code	LPC Priority
19	90266	3*
19	90274	3*
19	90275	3
19	90277	3*
19	90278	3*
19	90301	2
19	90302	2
19	90303	2
19	90304	2
19	90305	3*
19	90501	2
19	90502	3*
19	90503	3*
19	90504	3*
19	90505	3
19	90710	3
19	90731	2
19	90732	3
19	90744	2
19	90745	2
19	90746	3*
19	90802	2
19	90803	3*
19	90804	2
19	90805	1
19	90806	2
19	90807	2
19	90808	3*
19	90810	2
19	90813	1
19	90814	3*
19	90815	3*

All zip codes for the County are listed and given a corresponding LPC priority ranking of 1, 2 or 3. All zip codes assigned a priority 3 designated with an "\*" do not meet the threshold, yet have significant unmet need for subsidized services.

<b>SIGNATURES</b>		
Authorized Representative- County Board of Supervisors	Telephone Number	Date
Barbara Ferrer, Ph.D., M.P.H., M.Ed. Director, Department of Public Health	(213) 288-8117	
Authorized Representative- County Superintendent of Schools	Telephone Number	Date
Debra Duardo, M.S.W., Ed.D.	(566) 922-6111	
Local Child Care Planning Council Chairperson	Telephone Number	Date
Nellie Ríos-Parra	(310) 680-3500	3/6/2019



**Los Angeles County California State Preschool (CSPP) Priorities  
Full-Day and Part-Day State Preschool  
Fiscal Year 2018-19**

<b>Service Planning Area (SPA) 1</b>		
<b>County Number</b>	<b>Zip Code</b>	<b>LPC Priority</b>
19	93243	3*
19	93510	3*
19	93532	3*
19	93534	2
19	93535	2
19	93536	1
19	93543	3*
19	93550	3*
19	93551	2
19	93552	3
19	93553	3*
19	93560	3*
19	93591	3*

<b>Service Planning Area (SPA) 2</b>		
<b>County Number</b>	<b>Zip Code</b>	<b>LPC Priority</b>
19	91011	3*
19	91020	3*
19	91040	3*
19	91042	3*
19	91201	3*
19	91202	3*
19	91203	3*
19	91204	3*
19	91205	3*
19	91206	3*
19	91207	3*
19	91208	3*
19	91214	3*
19	91303	3*
19	91304	3*
19	91306	3*
19	91307	3*
19	91311	3*
19	91316	3*
19	91321	3*
19	91324	3*
19	91325	3*
19	91326	3*
19	91330	3*

Service Planning Area (SPA) 2 Continued		
County Number	Zip Code	LPC Priority
19	91331	2
19	91335	2
19	91340	3*
19	91342	3
19	91343	2
19	91344	3*
19	91345	3*
19	91350	3*
19	91351	3*
19	91352	3*
19	91354	3*
19	91355	3*
19	91356	3*
19	91361	3*
19	91362	3*
19	91364	3*
19	91367	3*
19	91381	3*
19	91384	3*
19	91387	3*
19	91390	3*
19	91401	3
19	91402	2
19	91403	3*
19	91405	3
19	91406	3
19	91411	3*
19	91423	3*
19	91436	3*
19	91501	3*
19	91502	3*
19	91504	3*
19	91505	3*
19	91506	3*
19	91601	3*
19	91602	3*
19	91604	3*
19	91605	3*
19	91606	3*
19	91607	3*

Service Planning Area (SPA) 3		
County Number	Zip Code	LPC Priority
19	91006	3*
19	91007	3*
19	91008	3*
19	91010	3*
19	91016	3*
19	91024	3*
19	91030	3*
19	91101	3*
19	91104	3*
19	91105	3*
19	91106	3*
19	91107	3*
19	91108	3*
19	91702	3*
19	91706	3*
19	91711	3*
19	91722	3*
19	91723	3*
19	91724	3*
19	91731	3*
19	91732	3
19	91733	3*
19	91740	3*
19	91741	3*
19	91745	3*
19	91746	3*
19	91748	3*
19	91750	3*
19	91754	3
19	91755	3
19	91765	3
19	91766	2
19	91767	3
19	91768	3*
19	91770	2
19	91773	3*
19	91775	3*
19	91776	3*
19	91780	3*
19	91789	3*
19	91790	3*
19	91791	3*
19	91792	3*
19	91801	3*

Service Planning Area (SPA) 3 Continued		
County Number	Zip Code	LPC Priority
19	91803	3*

Service Planning Area (SPA) 4		
County Number	Zip Code	LPC Priority
19	90004	3
19	90005	3*
19	90006	3*
19	90010	3*
19	90012	3
19	90013	3*
19	90014	3*
19	90015	3*
19	90017	3*
19	90019	3*
19	90020	3*
19	90021	3*
19	90023	3*
19	90026	2
19	90027	3*
19	90028	3*
19	90029	3*
19	90031	3*
19	90032	3*
19	90033	3*
19	90036	3*
19	90039	3*
19	90041	3*
19	90042	3
19	90046	3*
19	90048	3*
19	90057	3
19	90065	3*
19	90068	3*
19	90069	3*

Service Plannin Area (SPA) 5		
County Number	Zip Code	LPC Priority
19	90024	3*
19	90025	3*
19	90034	3*
19	90035	3*
19	90045	3*
19	90049	3*
19	90056	3*

<b>Service Plannin Area (SPA) 5 Continued</b>		
<b>County Number</b>	<b>Zip Code</b>	<b>LPC Priority</b>
19	90064	3*
19	90066	3*
19	90067	3*
19	90077	3*
19	90094	3*
19	90210	3*
19	90211	3*
19	90212	3*
19	90230	3*
19	90232	3*
19	90272	3*
19	90291	3*
19	90292	3*
19	90293	3*
19	90401	3*
19	90402	3*
19	90403	3*
19	90405	3*

<b>Service Planning Area (SPA) 6</b>		
<b>County Number</b>	<b>Zip Code</b>	<b>LPC Priority</b>
19	90001	2
19	90002	2
19	90003	2
19	90007	3*
19	90008	3*
19	90011	3*
19	90037	2
19	90043	3*
19	90044	2
19	90047	2
19	90059	2
19	90061	3*
19	90062	3*
19	90089	3*
19	90220	2
19	90221	2
19	90222	3
19	90262	2
19	90723	2

<b>Service Planning Area (SPA) 7</b>		
<b>County Number</b>	<b>Zip Code</b>	<b>LPC Priority</b>
19	90022	2
19	90040	3*
19	90058	3*
19	90063	3
19	90201	2
19	90240	3*
19	90241	3*
19	90242	3*
19	90255	2
19	90270	3
19	90280	2
19	90601	3*
19	90602	3*
19	90603	3*
19	90604	3*
19	90605	3*
19	90606	3*
19	90623	3*
19	90630	3*
19	90631	3*
19	90638	3*
19	90640	2
19	90650	2
19	90660	2
19	90703	3*
19	90706	2
19	90712	3*
19	90713	3*
19	90715	3*
19	90755	3*

<b>Service Planning Area (SPA) 8</b>		
<b>County Number</b>	<b>Zip Code</b>	<b>LPC Priority</b>
19	90245	3*
19	90247	2
19	90248	3*
19	90249	3*
19	90250	1
19	90254	3*
19	90260	3*
19	90266	3*
19	90274	3*
19	90275	3*
19	90277	3*

Service Planning Area (SPA) 8 Continued		
County Number	Zip Code	LPC Priority
19	90278	3*
19	90301	3*
19	90302	3*
19	90303	3*
19	90304	3*
19	90305	3*
19	90501	3*
19	90502	3*
19	90503	3*
19	90504	3*
19	90505	3*
19	90704	3*
19	90710	3*
19	90717	3*
19	90731	3*
19	90732	3*
19	90744	3*
19	90745	3*
19	90746	3*
19	90802	3
19	90803	3*
19	90804	3
19	90805	3*
19	90807	3
19	90808	3*
19	90810	3*
19	90813	3*
19	90814	3*
19	90815	3*

All zip codes for the County are listed and given a corresponding LPC priority ranking of 1, 2 or 3. All zip codes assigned a priority 3 designated with an "\*" do not meet the threshold, yet have significant unmet need for subsidized services.

<b>SIGNATURES</b>		
Authorized Representative- County Board of Supervisors	Telephone Number	Date
Barbara Ferrer, Ph.D., M.P.H., M.Ed. Director, Department of Public Health	(213) 288-8117	
Authorized Representative- County Superintendent of Schools	Telephone Number	Date
Debra Duardo, M.S.W., Ed.D.	(566) 922-6111	
Local Child Care Planning Council Chairperson	Telephone Number	Date
Nellie Ríos-Parra	(310) 680-3500	3/6/2019



**Los Angeles County General Child Care and Development Program (CCTR) Priorities  
School-Age Children  
Fiscal Year 2018-19**

<b>Service Planning Area (SPA) 1</b>		
<b>County Number</b>	<b>Zip Code</b>	<b>LPC Priority</b>
19	93243	3*
19	93510	3*
19	93532	3*
19	93534	1
19	93535	1
19	93536	1
19	93543	3
19	93550	1
19	93551	1
19	93552	1
19	93553	3*
19	93560	2
19	93591	3*

<b>Service Planning Area (SPA) 2</b>		
<b>County Number</b>	<b>Zip Code</b>	<b>LPC Priority</b>
19	91011	3*
19	91020	3*
19	91040	2
19	91042	1
19	91201	3
19	91202	3
19	91203	3*
19	91204	3*
19	91205	2
19	91206	2
19	91207	3*
19	91208	3
19	91214	2
19	91301	3*
19	91302	3*
19	91303	2
19	91304	1
19	91306	1
19	91307	2
19	91311	1
19	91316	1
19	91321	1
19	91324	2
19	91325	1

Service Planning Area (SPA) 2 Continued		
County Number	Zip Code	LPC Priority
19	91326	1
19	91330	3*
19	91331	1
19	91335	1
19	91340	1
19	91342	1
19	91343	1
19	91344	1
19	91345	1
19	91350	1
19	91351	1
19	91352	1
19	91354	2
19	91355	1
19	91356	1
19	91362	2
19	91364	2
19	91367	1
19	91381	2
19	91384	1
19	91387	1
19	91390	2
19	91401	1
19	91402	1
19	91403	2
19	91405	1
19	91406	1
19	91411	1
19	91423	2
19	91436	3
19	91501	3
19	91502	3*
19	91504	3
19	91505	2
19	91506	3
19	91601	1
19	91602	3*
19	91604	3*
19	91605	1
19	91606	1
19	91607	2

Service Planning Area (SPA) 3		
County Number	Zip Code	LPC Priority
19	91001	3
19	91006	2
19	91007	2
19	91008	3*
19	91010	1
19	91016	1
19	91024	3*
19	91030	2
19	91101	3
19	91103	2
19	91104	2
19	91105	2
19	91106	2
19	91107	3*
19	91108	3*
19	91702	1
19	91706	1
19	91711	2
19	91722	2
19	91723	3*
19	91724	3
19	91731	1
19	91732	1
19	91733	1
19	91740	3
19	91741	3
19	91744	1
19	91745	1
19	91746	1
19	91748	2
19	91750	3
19	91754	2
19	91755	2
19	91759	3*
19	91765	2
19	91766	1
19	91767	1
19	91768	1
19	91770	1
19	91773	3
19	91775	3
19	91776	2
19	91780	2

Service Planning Area (SPA) 3 Continued		
County Number	Zip Code	LPC Priority
19	91789	2
19	91790	1
19	91791	1
19	91792	2
19	91801	1
19	91803	2

Service Planning Area (SPA) 4		
County Number	Zip Code	LPC Priority
19	90004	1
19	90005	1
19	90006	1
19	90010	3*
19	90012	1
19	90013	2
19	90014	3
19	90015	1
19	90017	1
19	90019	1
19	90020	1
19	90021	3*
19	90023	1
19	90026	1
19	90027	1
19	90028	2
19	90029	1
19	90031	1
19	90032	1
19	90033	1
19	90036	2
19	90038	2
19	90039	1
19	90041	1
19	90042	1
19	90046	3
19	90048	3
19	90057	1
19	90065	1
19	90068	2
19	90069	3*

Service Planning Area (SPA) 5		
County Number	Zip Code	LPC Priority
19	90024	2
19	90025	1
19	90034	2
19	90035	2
19	90045	3
19	90049	3
19	90056	3*
19	90064	3
19	90066	2
19	90067	3*
19	90077	3*
19	90094	3*
19	90210	3*
19	90211	3*
19	90212	3*
19	90230	3
19	90232	3*
19	90265	3*
19	90272	3*
19	90291	3
19	90292	3*
19	90293	3*
19	90401	3*
19	90402	3*
19	90403	2
19	90404	3
19	90405	2

Service Planning Area (SPA) 6		
County Number	Zip Code	LPC Priority
19	90001	1
19	90002	1
19	90003	1
19	90007	1
19	90008	1
19	90011	1
19	90016	1
19	90018	1
19	90037	1
19	90043	1
19	90044	1
19	90047	1
19	90059	1

Service Planning Area (SPA) 6 Continued		
County Number	Zip Code	LPC Priority
19	90061	1
19	90062	1
19	90089	3*
19	90220	1
19	90221	1
19	90222	1
19	90262	1
19	90723	1

Service Planning Area (SPA) 7		
County Number	Zip Code	LPC Priority
19	90022	1
19	90040	2
19	90063	1
19	90201	1
19	90240	2
19	90241	1
19	90242	1
19	90255	1
19	90270	1
19	90280	1
19	90601	1
19	90602	2
19	90603	2
19	90604	1
19	90605	1
19	90606	2
19	90623	3
19	90630	1
19	90631	1
19	90638	1
19	90640	1
19	90650	1
19	90660	1
19	90670	2
19	90701	2
19	90703	1
19	90706	1
19	90712	1
19	90713	2
19	90715	2
19	90716	3
19	90755	2

Service Planning Area (SPA) 8		
County Number	Zip Code	LPC Priority
19	90245	3*
19	90247	1
19	90248	2
19	90249	1
19	90250	1
19	90254	3*
19	90260	1
19	90266	3
19	90274	3
19	90275	2
19	90277	2
19	90278	2
19	90301	1
19	90302	1
19	90303	2
19	90304	1
19	90305	2
19	90501	1
19	90502	3
19	90503	2
19	90504	3
19	90505	2
19	90704	3*
19	90710	3
19	90717	3
19	90731	1
19	90732	1
19	90744	1
19	90745	1
19	90746	2
19	90802	1
19	90803	3
19	90804	1
19	90805	1
19	90806	1
19	90807	1
19	90808	3*
19	90810	1
19	90813	1
19	90814	2
19	90815	3*

All zip codes for the County are listed and given a corresponding LPC priority ranking of 1, 2 or 3. All zip codes assigned a priority 3 designated with an "\*" do not meet the threshold, yet have significant unmet need for subsidized services.

<b>SIGNATURES</b>		
Authorized Representative- County Board of Supervisors	Telephone Number	Date
Barbara Ferrer, Ph.D., M.P.H., M.Ed. Director, Department of Public Health	(213) 288-8117	
Authorized Representative- County Superintendent of Schools	Telephone Number	Date
Debra Duardo, M.S.W., Ed.D.	(566) 922-6111	
Local Child Care Planning Council Chairperson	Telephone Number	Date
Nellie Ríos-Parra	(310) 680-3500	3/6/2019





Home / Specialized Programs / Child Development / Contractor Information

## MB 15-04 Attachment 2

Attachment 2 to Management Bulletin (MB) 15-04 describes and defines the process by which Local Planning Councils (LPCs) establish priorities for the California Center Infant and Toddler Program (CCTR).

---

### Attachment 2: CCTR Priorities for Full-Day Infant Toddler Services

#### 1. Counties with over 10 million residents (Los Angeles County)

**Priority 1:** A zip code qualifies as Priority 1 when there are 50% or more of eligible children underserved, **and** there are more than 1,500 eligible children underserved.

**Priority 2:** A zip code qualifies as Priority 2 when there are 50% or more of eligible children underserved, **and** there are more than 750 eligible children underserved.

**Priority 3:**

**Option 1:** A zip code qualifies as Priority 3 when there are 50% or more of eligible children underserved, **and** there are more than 500 eligible children underserved.

**Option 2:** All other zip codes in the county.

**Option 3:** No other zip codes in the county.

#### 2. Counties with over 1 million residents (Orange County; San Diego County; Riverside County; San Bernardino County; Santa Clara County; Alameda County; Sacramento County; and Contra Costa County)

**Priority 1:** A zip code qualifies as Priority 1 when there are 40% or more of eligible children underserved, **and** there are more than 300 eligible children underserved.

**Priority 2:** A zip code qualifies as Priority 2 when: there are 40% or more of eligible children underserved, **and** there are more than 200 eligible children underserved.

**Priority 3:**

**Option 1:** A zip code qualifies as Priority 3 when: there are 25% or more of eligible children underserved, **and** there are more than 100 eligible children underserved.

**Option 2:** All other zip codes in the county.

**Option 3:** No other zip codes in the county.

#### 3. Counties with over 200,000 residents (Fresno County; Ventura County; Kern County; San Francisco County; San Mateo County; San Joaquin County; Stanislaus County; Sonoma County; Tulare County; Solano County; Monterey County; Santa Barbara County; Placer County; San

Luis Obispo County; Santa Cruz County; Marin County; Merced County; Butte County; and Yolo County)

**Priority 1:** A zip code qualifies as Priority 1 when there are 40% or more of eligible children underserved, **and** there are more than 150 eligible children underserved.

**Priority 2:** A zip code qualifies as Priority 2 when there are 25% or more of eligible children underserved, **and** there are more than 75 eligible children underserved.

**Priority 3:**

**Option 1:** A zip code qualifies as Priority 3 when there are 25% or more of eligible children underserved, **and** there are more than 50 eligible children underserved.

**Option 2:** All other zip codes in the county.

**Option 3:** No other zip codes in the county.

4. **Counties with under 200,000 residents** (Shasta County; El Dorado County; Imperial County; Kings County; Madera County; Napa County; Humboldt County; Nevada County; Sutter County; Mendocino County; Yuba County; Lake County; and Tehama County)

**Priority 1:** A zip code qualifies as Priority 1 when there are 50% or more of eligible children underserved, **and** there are more than 24 eligible children underserved.

**Priority 2:** A zip code qualifies as Priority 2 when there are 35% or more of eligible children underserved, **and** there are more than 10 eligible children underserved.

**Priority 3:**

**Option 1:** A zip code qualifies as Priority 3 when there are 20% or more of eligible children underserved, **and** there are more than 10 eligible children underserved.

**Option 2:** All other zip codes in the county.

**Option 3:** No other zip codes in the county.

5. **Counties with under 60,000 residents** (Tuolumne County; San Benito County; Calaveras County; Siskiyou County; Amador County; Lassen County; Del Norte County; Glenn County; Colusa County; Plumas County; Mariposa County; Inyo County; Trinity County; Mono County; Modoc County; Sierra County; and Alpine County)

**Priority 1:** A zip code qualifies as Priority 1 when there are 50% or more of eligible children underserved, **and** there are more than 10 eligible children underserved.

**Priority 2:** A zip code qualifies as Priority 2 when there are 35% or more of eligible children underserved, **and** there are more than 10 eligible children underserved.

**Priority 3:**

**Option 1:** A zip code qualifies as Priority 3 when there are 20% or more of eligible children underserved, **and** there are more than 10 eligible children underserved.

**Option 2:** All other zip codes in the county.

**Option 3:** No other zip codes in the county.

**Return to Top**

[Open Attachment 4: LPC Priority Submittal Form \(DOC\)](#)

[Return to MB 15-04](#)

**Questions: Early Learning and Care Division | 916-322-6233**

Last Reviewed: Tuesday, December 18, 2018

---



Home / Specialized Programs / Child Development / Contractor Information

## MB 15-04 Attachment 1

Attachment 1 to Management Bulletin (MB) 15-04 describes and defines the process by which Local Planning Councils (LPCs) establish priorities for the California State Preschool Full and Part-Day Program (CSPP).

---

### Attachment 1: CSPP Full-Day and Part-Day Priorities

#### 1. Counties with over 10 million residents (Los Angeles County)

**Priority 1:** A zip code qualifies as Priority 1 when there are 50% or more of eligible children underserved, **and** there are more than 1,500 children underserved.

**Priority 2:** A zip code qualifies as Priority 2 when: there are 50% or more of eligible children underserved, **and** there are more than 750 children underserved.

**Priority 3:**

**Option 1:** A zip code qualifies as Priority 3 when there are 50% or more of eligible children underserved, **and** there are more than 500 children underserved.

**Option 2:** All other zip codes in the county

**Option 3:** No other zip codes in the county

#### 2. Counties with over 1 million residents (Orange County; San Diego County; Riverside County; San Bernardino County; Santa Clara County; Alameda County; Sacramento County; and Contra Costa County)

**Priority 1:** A zip code qualifies as Priority 1 when there are 40% or more of eligible children underserved, **and** there are more than 300 children underserved.

**Priority 2:** A zip code qualifies as Priority 2 when there are 40% or more of eligible children underserved, **and** there are more than 200 children underserved.

**Priority 3:**

**Option 1:** A zip code qualifies as Priority 3 when there are 25% or more of eligible children underserved, **and** there are more than 100 children underserved.

**Option 2:** All other zip codes in the county.

**Option 3:** No other zip codes in the county.

3. **Counties with over 200,000 residents** (Fresno County; Ventura County; Kern County; San Francisco County; San Mateo County; San Joaquin County; Stanislaus County; Sonoma County; Tulare County; Solano County; Monterey County; Santa Barbara County; Placer County; San Luis Obispo County; Santa Cruz County; Marin County; Merced County; Butte County; and Yolo County)

**Priority 1:** A zip code qualifies as Priority 1 when there are 40% or more of eligible children underserved, **and** there are more than 150 children underserved.

**Priority 2:** A zip code qualifies as Priority 2 when there are 25% or more of eligible children underserved, **and** there are more than 75 children underserved.

**Priority 3:**

**Option 1:** A zip code qualifies as Priority 3 when there are 25% or more of eligible children underserved, **and** there are more than 50 children underserved.

**Option 2:** All other zip codes in the county.

**Option 3:** No other zip codes in the county.

4. **Counties with under 200,000 residents** (Shasta County; El Dorado County; Imperial County; Kings County; Madera County; Napa County; Humboldt County; Nevada County; Sutter County; Mendocino County; Yuba County; Lake County; and Tehama County)

**Priority 1:** A zip code qualifies as Priority 1 when: there are 50% or more of eligible children underserved, **and** there are more than 24 children underserved.

**Priority 2:** A zip code qualifies as Priority 2 when there are 35% or more of eligible children underserved, **and** there are more than 10 children underserved.

**Priority 3:**

**Option 1:** A zip code qualifies as Priority 3 when there are 20% or more of eligible children underserved, **and** there are more than 10 children underserved.

**Option 2:** All other zip codes in the county.

**Option 3:** No other zip codes in the county.

5. **Counties with under 60,000 residents** (Tuolumne County; San Benito County; Calaveras County; Siskiyou County; Amador County; Lassen County; Del Norte County; Glenn County; Colusa County; Plumas County; Mariposa County; Inyo County; Trinity County; Mono County; Modoc County; Sierra County; and Alpine County)

**Priority 1:** A zip code qualifies as Priority 1 when there are 50% or more of eligible children underserved, **and** there are more than 10 children underserved.

**Priority 2:** A zip code qualifies as Priority 2 when there are 35% or more of eligible children underserved, **and** there are more than 10 children underserved.

**Priority 3:**

**Option 1:** A zip code qualifies as Priority 3 when there are 20% or more of eligible children

underserved, **and** there are more than 10 children underserved.

**Option 2:** All other zip codes in the county

**Option 3:** No other zip codes in the county

**Return to Top**

[Open Attachment 4: LPC Priority Submittal Form \(DOC\)](#)

[Return to MB 15-04](#)

**Questions: Early Learning and Care Division | 916-322-6233**

Last Reviewed: Tuesday, December 18, 2018

---

## Proposed Strategic Plan Principles<sup>1</sup>

*[Work-in-progress introduction – principles aligned with DPH priorities– working to impact systems change in policies and program services to improve healthier outcomes whereas early care and education contributes to the optimal development of children, stronger families and thriving communities throughout the County of Los Angeles.]*

1. All children and their families should have access to nurturing, educational, culturally, linguistically and developmentally appropriate high-quality early care and education opportunities with a commitment to social, behavioral, cognitive and physical development and continuity of care.
2. Equity must inform all decisions and systems and implicit bias must be eradicated. Policies and systems should affirmatively remove obstacles and barriers for families seeking access to early care and education.
3. All families should have access to a variety of early care and education settings<sup>2</sup> that meet their needs and definition of high quality that are affordable.
4. High quality early care and education requires a competent, effective and well-compensated and professionally supported workforce who reflect the racial, ethnic and linguistic diversity and needs of the children and the families they serve across the various roles and settings where they work.
5. Early care and education must be integrated with other supports and services that contribute to children's optimal development, engages and strengthens families, and builds upon the capacity of the workforce.
6. High quality early care and education requires leveraging financing that is adequate and sustainable with incentives for quality and targeted investments to ensure equity for children and families with the greatest needs.
7. Efforts are required to maintain services, prioritize areas of need by targeting investments, continue to invest in what works and build upon areas of success.
8. The County of Los Angeles in partnership with its local stakeholders<sup>3</sup> plays a significant role in advocating for legislative and administrative policies and investments informed by robust data and current research to meet the needs of our children and their families. Our work must be transparent, accountable, collaborative and committed to equity, continuous improvement and responsive to emerging needs.

---

<sup>1</sup> Adapted from the Assembly Blue Ribbon Commission on Early Childhood Education Principles approved on October 9, 2018. Their principles are posted at <https://speaker.asmdc.org/sites/speaker.asmdc.org/files/pdf/BRC-Principles-Final-120318.pdf>.

<sup>2</sup> The early care and education system is comprised of licensed centers (operated by school districts, faith-based communities, nonprofit organizations and proprietary agencies) and family child care homes and license-exempt providers often referred to as family friend and neighbor care.

<sup>3</sup> Local stakeholders are inclusive of parents and other primary caregivers (e.g. foster parents, legal guardians and relatives), philanthropy, advocacy organizations, business and others concerned with the overall well-being of children, families and communities.



## Proposed Strategic Plan Principles

### Breakout Questions

1. What do you like about the principles?

2. What is missing from the principles?

3. How do we reflect the principles in the Strategic Plan?

4. Additional thoughts?