

AGENDA

Welcome and Introductions

- 10:00 1. Comments from the Chair Terry Ogawa
- Nominations for Vice Chair – 2019-20
 - OAECE Director Search Update

- 10:10 2. Approval of Minutes – March 13, 2019 **Action Item** Terry Ogawa

Public Policy

- 10:15 3. Priority Legislation Dean Tagawa & Michele Sartell
- AB 1001 (Ting) – Local Planning Councils
 - AB 123 (McCarty) – Early Childhood Education
 - AB 324 (Aguiar-Curry) – Professional Support Stipends
 - AB 125 (McCarty) – Reimbursement Rate System
 - AB 194 (Reyes) – Childcare and Development Services Investment

- 10:40 Board Motion: Assessing County Property for Future ECE Sites Kelly Quinn and Max Thelander, Master Planning Unit, Asset Managements Branch of the Chief Executive Office

Ongoing Efforts

- 11:10 Strategic Planning Richard Cohen
- Review of Vision and Mission
 - Outcome Goals and Preliminary Objectives

Wrap-up

- 11:45 6. Announcements & Public Comments Meeting Participants
- 11:55 7. Meeting in Review & Call to Adjourn Terry Ogawa

Next Meeting:

Wednesday, May 8, 2019, 10:00 a.m. to 12:00 p.m.
 Kenneth Hanh Hall of Administration
 500 West Temple Street Room 743
 Los Angeles, CA 9001

This page intentionally blank.



COUNTY OF LOS ANGELES

Child Care Planning Committee and Policy Roundtable for Child Care and Development

POLICY • PLANNING • PROGRAM

April 10, 2019

California Assembly Blue Ribbon Commission on Early Childhood Education
c/o The Honorable Anthony Rendon, Speaker of the Assembly
State Capitol, Room 219
Sacramento, CA 95814

RESPONSE TO DRAFT RECOMMENDATIONS

Dear Commissioners:

The Los Angeles County Policy Roundtable for Child Care and Development (PRCCD) and the Child Care Planning Committee (CCPC) congratulate the Assembly Blue Ribbon Commission (BRC) on Early Childhood Education on the release of your draft recommendations addressing our system of early care and education services serving children from birth to five years old and their families. The PRCCD was established by the Los Angeles County Board of Supervisors in 2001. Our members represent the collective expertise of community leaders in early childhood, education, business, economics, research and County departments representing child welfare, public and social services, mental health, probation, public health, and parks and recreation. The PRCCD builds and strengthens the early care and education system for children under five years old by providing recommendations to the County Board of supervisors on policy, systems, and infrastructure improvement. The CCPC serves as Los Angeles County's local child care and development planning council as mandated by state legislation. Its mission is to engage parents, child care providers, allied organizations, and community and public agencies in collaborative planning efforts to improve the overall child care infrastructure of the County, including the quality and continuity, affordability, and accessibility of child care and development services for all families.

The Los Angeles County Office for the Advancement of Early Care and Education, the PRCCD, the CCPC, our County's Help Me Grow-Los Angeles Initiative and the Perinatal and Early Childhood Home Visiting Program are all now housed under the Department of Public Health. This advantageous move provides us with the opportunity to work in a comprehensive manner that contributes to overall child and family well-being. Your recommendations confirm this need to look beyond funding streams, inefficient and time-consuming regulations, and siloed and disjointed services; it acknowledges the importance of comprehensive and equitable systems of support for all young children and their families.

The PRCCD and CCPC's Public Policy Platform for Early Care and Education, approved by the Board of Supervisors in December 2018, is consistent with your recommendations that elevate challenges and opportunities to tackle issues that impact the availability of and access to affordable, high quality early care and education programs for all children and their families.

In summary, our Public Policy Platform items are as follows:

1. Support efforts to enhance the quality of early care and education that set high standards for all services and program types and address the needs of all children, including those with disabilities and other special needs, and their families.



2. Support efforts to develop and implement a statewide quality rating and improvement system and a system to adjust reimbursement rates based on demonstrated quality.
3. Support efforts to develop and sustain a well-educated and highly skilled professional workforce prepared to serve the culturally and linguistically diverse child and family populations of Los Angeles County.
4. Support efforts to ensure the health and safety of all children cared for in licensed early care and education facilities as afforded by timely, regular, and frequent on-site monitoring by the California Department of Social Services, Community Care Licensing.
5. Support efforts to adequately fund high quality early care and education services for all children from low and moderate incomes.
6. Support the streamlining of California Department of Education administrative processes to expand access for low-income families, ensure continuity of care, and promote flexible use of early care and education funding to meet the needs of families.
7. Support proposals designed to prevent, detect, investigate, and when appropriate, prosecute fraud in subsidized child care and development programs.
8. Support efforts to ensure that vulnerable children and their families have access to consistent, uninterrupted subsidized early care and education services.
9. Support efforts to expand the supply of appropriate early care and education services through facility development in communities with a significant shortage of these services.

We have attached the complete Public Policy Platform for your reference.

Currently, the PRCCD and CCPC are working on the County's five-year strategic plan for early care and education. We adopted the BRC's Guiding Principles with adaptations to our County's infrastructure and needs to set the stage for our plan. In addition, the BRC draft recommendations combined with sound research and our local needs assessment are proving informative as we craft the outcome goals and strategic objectives centered on increasing access, enhancing quality, growing the workforce, and engaging families and communities.

We acknowledge that the deadline for submission of comments has passed, yet we want to take this opportunity to document our concurrent with many of for your recommendations. We are prepared to work with you and our Board of Supervisors to implement these necessary changes on behalf of our young children and their families.

Yours truly,



Terry Ogawa, Chair
Policy Roundtable for Child Care and Development



Nellie Ríos-Parra, Chair
Child Care Planning Committee

COUNTY OF LOS ANGELES



POLICY ROUNDTABLE FOR CHILD CARE AND DEVELOPMENT

POLICY • PLANNING • PRACTICE

Jeannette Aguirre

Maria Calix

Ellen Cervantes

Karen Chang

Fran Chasen

Richard Cohen, Ph.D.

Kalene Gilbert

Robert Gilchick, M.D., M.P.H.

Jennifer Hottenroth, Psy.D.

Karla Pleitéz Howell, J.D.

Dawn A. Kurtz, Ph.D.

Sharoni Little, Ph.D.

Jackie B. Majors

Jacqueline McCroskey, D.S.W.

Terry Ogawa

Faith Parducho

Nurhan Pirim

Nellie Ríos-Parra

Dean Tagawa, Ph.D.

Boris E. Villacorta

Keesha Woods

April 25, 2019

The Honorable Richard D. Roth, Chair
Senate Budget and Fiscal Review Subcommittee No. 1 on Education
Capitol Office, Room 2136
Sacramento, CA 95814

Dear Senator Roth:

The Los Angeles County Policy Roundtable for Child Care and Development (Roundtable) is encouraged by the Governor's Fiscal Year 2019-20 State Budget proposal that prioritizes the well-being of young children and their families. The Roundtable, staffed by the Office for the Advancement of Early Care and Education within the Los Angeles County Department of Public Health, represents the collective experience, expertise and wisdom of community leaders in early childhood, education, business, economics and research and County departments representing child welfare, mental health, probation, public health, social services, and parks and recreation. As a County Board of Supervisors-appointed Commission, its primary mission is to build and strengthen child care and development services by providing recommendations to the Board of Supervisors on policy, systems, and infrastructure improvement.

The Governor's proposed investments in early care and education includes nearly \$2 billion to increase access to full-day preschool, expand facility development, and further professional development opportunities for early educators as essential steps toward a comprehensive cradle-to-career agenda.

While the budget proposal would substantially increase investments for expanding access to preschool and strengthen the infrastructure of the system of early care and education services, it falls short for meeting the needs of low-income families seeking care for their babies and toddlers. Furthermore, it does not address the bifurcated reimbursement rate system that limits access, does not fairly compensate an educated and skilled workforce, nor meet the costs associated with meeting the standards of high quality.



The Honorable Richard D. Roth, Chair

April 25, 2019

Page 2

Los Angeles County is home to an estimated 385,507 children from birth to five years old residing in low-income families, of which 79 percent lack access to subsidized early care and education services. Most alarming, 93 percent of babies and toddlers of income eligible families compared to 60 percent of preschoolers are unable to access services. Affording early care and education options is critical to providing parents with the support they need for meaningful and stable employment, thereby moving families out of poverty. Furthermore, children's participation in high quality programs with qualified early educators working in partnership with parents contributes to their healthy growth and development that puts them on a trajectory for lifelong success.

Thank you for your work on behalf of the children and families of California.

Sincerely,



Terry Ogawa,
Chair

Cc: Senator Connie Leyva
Senator Mike Morrell

Meeting Minutes for March 13, 2019

Welcome and Introductions

1. Call to Order and Comments by the Chair

Chair Terry Ogawa opened the meeting of the Policy Roundtable for Child Care and Development (Roundtable) at 10:05 a.m. with self-introductions.

2. Approval of February 13, 2019 Minutes

Upon a motion by Boris Villacorta and seconded by Karla Pleitéz-Howell, the minutes for the meeting held February 13, 2019 were approved. Richard Cohen and Nurhan Pirim abstained.

Public Policy

3. Building California's Future: Tackling the Facilities Challenge for Our Youngest Learners

Karla Pleitéz Howell stated that the policy brief published in February 2019 by the Advancement Project entitled *Building California's Future: Tackling the Facilities Challenge for Our Youngest Learners, Policy Brief* studies foundational needs in the system for expanding early care and education programs. The purpose of the policy brief is two-fold: 1) setting up Los Angeles County for readiness to leverage facility dollars as they become available; and 2) identifying strategies to elevate to Sacramento to ensure that the system works in our county.

Mrs. Pleitéz Howell shared some of the findings and recommendations from the policy brief. There was an extensive discussion on the findings.

4. Child Care and Early Childhood Education Timeline

Ellen Cervantes distributed and spoke to the Child Care and Early Childhood Education Timeline prepared by Child Care Resources Center. This timeline is a history of California Legislation from 1913 to 2018.

5. Responding to the Governor's Budget Proposals and Prioritizing Legislation

Michele Sartell provided an overview of the process for elevating recommended pursuits of positions on policy issues that the Roundtable would like the Board to take now that the Office for the Advancement of Early Care and Education (OAECE) is located within the Department of Public Health (DPH). The process includes an internal vetting process with DPH leadership including the legislative analyst that is required before the recommended pursuit of position is shared with this Roundtable.

Michele referenced a copy of the Board motion in response to Governor Newsom's early care and education budget proposals FY 2019-20 that was shared at the last meeting. The motion resulted in a five-signature letter to the Governor and County Legislators acknowledging the Governor's proposals to boost investments in early care and education while also noting critical areas not addressed in the budget including funding for babies and toddlers and attention to the reimbursement rate system. She stated that the Budget Committee Hearings



are on the horizon with the Assembly Budget Sub-Committee #2 on Education Finance scheduled for March 26, 2019. Michele has prepared a draft letter on behalf of the Roundtable to the committee chairs and members comparable to the letter that was sent by the Board of Supervisors. The letter is currently going through the internal vetting process and is expected to be ready for review by the Roundtable membership at the April meeting.

Michele referred meeting participants to the matrix of state legislation, noting that it is updated weekly and sent to the membership via e-mail. She briefly reviewed the structure and purpose of the matrix that is designed to track the progress of bills relating to early care and education during the current legislative session. Each bill is reviewed by the Roundtable and Child Care Planning Committee (Planning Committee) Joint Committee on Legislation and assigned a level of interest to ensure those that are considered of highest priority are closely monitored. While the level of interest does not denote a potential position on the bill, the interest assignments are helpful in identifying potential bills that may be elevated by the Planning Committee and Roundtable with recommendations for the Board to consider taking pursuits of positions.

Michele shared bills of high interest that are consistent with the current priorities established by early care and education stakeholder groups across the state as well as County policy:

- Increase investments for infants and toddlers – AB 194 (Reyes)
- Reform the reimbursement rates system – AB 125 (McCarty) and SB 174 (Leyva)
- Expansion of child and care retention/salary program (AB212) AB 324 (Aguiar-Curry)
- Invest in Facility Development – AB 452 (Mullin)
- Ease restrictions in local ordinances for the development of large family child care homes – SB 234 (Skinner)
- High quality childcare for vulnerable children and toddlers – AB 167
- Ensure holistic implementation of early childhood education programs and universal preschool – AB 6

Michele invited participants to ask questions or comment on the priorities, adding “are these the right priorities?” Members provided feedback and shared additional bills they would like to add to the list for close monitoring.

6. Assembly Blue Ribbon for Commission on Early Childhood Recommendations

Jacquelyn McCroskey stated that Monday, March 11th was the final public hearing on the recommendations prepared by the Blue Ribbon Commission on Early Childhood Education (Blue Ribbon Commission), which has been meeting for two years. The Blue Ribbon Commission was established by the Assembly Member Rendon with a vision for early childhood and education in the short- and long-term. Additional components will be added and released with the final report. Written public comments to the recommendations are due by March 20th. Jacquelyn shared some highlights from the recommendations. The Roundtable will be preparing a letter in response to the recommendations.

Ongoing Efforts

7. Strategic Planning: Review of Proposed Principles

Ellen Cervantes provided a brief update of the assignment to the smaller work group to shape the strategic plan. At their most recent meeting, the group spent some time discussing statewide, regional and county initiatives/policies emerging that should be considered in the development of the plan. Ellen mentioned that they reviewed the draft principles adapted from those developed by the Blue Ribbon Commission.

Ellen referenced the draft principles included in the meeting packet. The draft principles reflect the comments from the retreat, including ensuring they are appropriate for Los Angeles County. Ellen concluded her presentation by asking the group to take some time to review the drafted principles and provide comments.

8. Update on Director Selection Process

Dr. Robert Gilchick reported that within the last two weeks two strong, qualified candidates have been identified. The next step is to schedule a meet and greet between representatives of the Roundtable and Planning Committee and each of the candidates.

Wrap Up

9. Announcements and Public Comments

Dr. Gilchick shared that OAECE is tasked with forming a workgroup to discuss social emotional learning beginning in preschool, and through the whole spectrum of education. This group should include internal DPH staff as well as external stakeholders.

Nellie invited Roundtable meeting participants to help with the recruitment of members for FY 2019-20 of the Planning Committee. Applications were shared with the group.

10. Meeting in Review

a. Action Items

Item Description	Lead
Policy Stakeholder Event Continue the Strategic Planning Progress	Terry Ogawa Richard Cohen & Ellen Cervantes

b. Follow up Items

Item Description	Lead	Pending/Due
Early Childhood Mental Health Consultation	Kalene Gilbert	Updates
Child Care Alliance of Los Angeles to present the updates on the Emergency Child Care Bridge Program for Foster Children	Ellen Cervantes Cristina Alvarado	Updates
Continue discussions with Cheryl Wold on strengthening and using data from the <i>Portrait of Los Angeles County</i>	Terry Ogawa	TBD
Continue discussions with the Office of Women and Girls Initiative	Terry Ogawa	TBD
Measure H – Homeless Initiative: Board of Supervisor's Child Care Motion	Cristina Alvarado	Updates

11. Call to Adjourn

The meeting was adjourned at 12:00 p.m.

Members Attending:

Boris Villacorta, First Supervisorial District
Dawn Kurtz, Child360
Ellen Cervantes, Fifth Supervisorial District
Jackie Majors, Child Care Alliance of Los Angeles
Jennifer Hottenroth, Department Children and Family Services
Karla Pleitéz Howell, First Supervisorial District
Nellie Ríos-Parra, Child Care Planning Committee

Nurhan Pirim, Department of Social Services
Richard Cohen, Third Supervisorial District
Robert Glichick, Department of Public Health
Sharoni Little, Second Supervisorial District
Terry Ogawa, Third Supervisorial District

Alternate Members Attending:

Debi Anderson for Keesha Woods, Los Angeles County Office of Education
Liliana Hernandez, Southern California Chapter of the California Association for the Education of Young Children
Paul Pulver, Child Care Alliance of Los Angeles County

Guests Attending:

Anna Hovasapian, Los Angeles City Councilmember Krekorian
Debra Colman, First 5 LA
Dianne Philibosian, Child Care Planning Committee/Fifth Supervisorial District
Ernesto Saldaña, Advancement Project
Katie Fallin Kenyon, Kenyon Consulting
Porsha Cropper, Second Supervisorial District
Robert Beck, Department of Public Social Services
Yasmin Grewal-Kök, Early Edge California

Staff:

Marghot Carabali
Michele Sartell



LEGISLATION BEING CONSIDERED BY THE CALIFORNIA STATE LEGISLATURE – FIRST LEGISLATIVE SESSION OF 2019-20

Level of Interest ¹	Bill Number (Author)	Brief Description	Sponsor	Contact	County Position	Support	Oppose	Status (As of 4/9/19)
California Assembly Bills								
Watch	AB 2 (Santiago, Bonta, Cervantes, Chiu, Friedman, Gonzalez, McCarty, & Quirk-Silva)	Would amend existing Ed Code to authorize a community college to use California College Promise funding to waive <i>all or some of the</i> fees for 2 academic years for first-time students enrolled at the college full time, and complete and submit either a Free Application for Federal Student Aid or a California Dream Act application. <i>A community college student who has previously earned a degree or certificate from a post-secondary educational institution would be ineligible for the waiver.</i>	Los Angeles Community College District			AAP, CA City College of San Francisco; Foothill-De Anza, Kern, Long Beach, Los Rios Peralta, San Diego and South Orange County Community College Districts; LA College Faculty Guild; Local 1521; LAUSD; Mayor of LA; Protect CA; Santa Monica College		Introduced: 12/3/18 Amended: 1/30/19 Amended: 3/11/19 Passed Committee on Higher Education on 3/19/19 to: Committee on Appropriations Suspense File
Spot Bill 1	AB 5 (Gonzalez)	Adds to existing law resulting from the decision in the Supreme Court case on Dynamex Corporations West that creates a presumption that a worker who performs services for a hirer is an employee. The bill would clarify its application to independent contractors.		Shubhangi Domokos Shubhangi.Domokos@asm.ca.gov 916.319.2080		American Trucking Assoc, Inc., Assoc of Language Companies, Chamber of Commerce CA, Ambulance Assoc CA, Assoc of Licensed Investigators, CA Building Industry Assoc, CA Coalition of Travel Orgs, CA Construction & Industrial Materials Assoc, CA Defense Counsel, CA Employment Law Council, CA Forestry Assoc, CA League of Food Producers, CA News Publishers Assoc, CA Retailers Assoc, Citizens Against Lawsuit Abuse, Civil Justice Assoc of CA, Nat' Council for Languages & Internat'l Studies Pro Small Biz, & many more	Numerous Individuals, Southwest California Legislative Council	Introduced: 12/3/18 Amended: 3/26/19 Passed Committee on Labor and Employment on 4/3/19 to: Committee on Appropriations



* Levels of interest are assigned by the Joint Committee on Legislation based on consistency with the Public Policy Platform accepted by the Child Care Planning Committee and Policy Roundtable for Child Care and Development and consistent with County Legislative Policy for the current year. Levels of interest do *not* indicate a pursuit of position in either direction. The Joint Committee will continue to monitor all listed bills as proceed through the legislative process. Levels of interest may change based on future amendments.

Level of Interest¹	Bill Number (Author)	Brief Description	Sponsor	Contact	County Position	Support	Oppose	Status (As of 4/9/19)
Watch	AB 6 (Reyes & McCarty)	Would establish by 1/1/21 in the CA Department of Education (CDE) the Early Childhood Education Branch, replacing the Early Learning and Care Division, to ensure a holistic implementation of early childhood education programs and universal preschool. Requires the office to have specified responsibilities.		Amer Rashid Amer.rashid@asm.ca.gov 916.319.2047		AAP-CA, CA Academy of Child and Adolescent Psychiatry, CA State PTA, CTA	California Right to Life Committee	Introduced: 12/3/18 Amended: 3/18/19 Amended: 4/2/19 Passed Committee on Education on 3/27/19 to: Committee on Human Services Hearing: 4/9/19
Watch	AB 8 (Chu)	Would require by 12/31/22 a school or a school district or county office of education (COE) and a charter school to have at least one mental health professional for every 400 pupils generally accessible to pupils on campus during school hours. Would <i>encourage</i> a school subject with pupils eligible to receive Medi-Cal benefits to seek reimbursement for costs.	Mental Health America			Calexico USD, CA Coalition for Mental Health, CA Society of Addiction Medicine, CA State PTA, Desert Sands USD, MH Association In CA, NAMI Amador, Parents & Caregivers for Wellness, United Parents, many individuals	CA Right to Life Committee, Inc., CA School Boards Association	Introduced: 12/3/18 Amended: 3/4/19 Amended: 3/19/19 Committee on Education Passed on 3/13/19 and passed to: Committee on Health Hearing: 4/23/19
Watch	AB 15 (Nazarian, McCarty & Ting)	Would establish the Children's Savings Account Program to expand access to higher education. Children born on or after 1/1/20 who are California resident at the time of birth would be eligible for the program. <i>Seed deposit would be at least \$25 (among other amendments).</i>		Noah Lightman Noah.Lightman@asm.ca.gov 916.319.2046		AAP-CA, CA Asset Building Coalition, CA Catholic Conf, CWDA of CA, Santa Cruz Community Ventures, United Ways of CA	CA Right to Life Committee	Introduced: 12/3/18 Amended: 3/14/19 Amended: 3/25/19 Passed Committee on Higher Education on 4/2/19 to: Committee on Appropriations

Level of Interest¹	Bill Number (Author)	Brief Description	Sponsor	Contact	County Position	Support	Oppose	Status (As of 4/9/19)
	AB 23 (Burke)	<i>Would establish a Deputy of Business and Workforce Coordination in the Office of Small Business Advocate, to be appointed by the Director of the Governor's Office of Business and Economic Development. Would require the deputy to collaborate and coordinate with the Labor and Workforce Development Agency, CDE, and Office of the Chancellor of the CA Community Colleges to engage industry and business to better align career technical education courses, workforce training programs, and pre-apprenticeship and apprenticeship programs with regional and local labor market demand. Would require the deputy to establish a team to cover all industry sectors across all regions in the state to execute the mission and responsibilities of the deputy.</i>						<p>Introduced: 12/3/19 Amended: 3/26/19</p> <p>Committee on Jobs, Economic Development, and the Economy Hearing: 4/23/19</p>
Watch	AB 24 (Burke)	Would allow, under the Personal Income Tax La, for taxable years as of 1/1/19, a qualified taxpayer a Targeted Child Tax Credit (TCTC) in an amount equal to the difference between the qualified taxpayer's net resources and a specified percentage of the poverty threshold as provided, using the CA Poverty Measure.						<p>Introduced: 12/3/18 Amended: 3/26/19</p> <p>Committee on Revenue and Taxation</p>

Level of Interest¹	Bill Number (Author)	Brief Description	Sponsor	Contact	County Position	Support	Oppose	Status (As of 4/9/19)
1	AB 123 (McCarty, Berman, Bonta, Burke, Carrillo, Chiu, Friedman, Gonzalez, Limón, Reyes, Santiago, Ting, & Wicks)	Would create the Pre-K for All Act of 2019 and amend sections of and add to the CA Education Code relating to early childhood education as follows: 1) allow CSPPs to enroll unused slots to families with incomes above the eligibility cap; 2) increase the reimbursement rate for full-day CSPP with 65 % of increase to advance towards pay parity between state preschool and kindergarten teachers; 3) require the Commission on Teacher Credentialing to update permit requirements for CSPP teachers; 4) establish the CA Preschool Teacher Qualifications Program; 5) require LPCs to develop and submit to CDE a plan for expanding CSPP based on enrollment priorities to determine disbursement augmentations for child care expansion; and 6) require the SPI to adjust rates for TK pupils.	Early Edge CA, Kidango, Advancement Project, Children Now, CFT, Fight Crime: Invest in Kids, LA Area Chamber of Commerce	Suzy Costa 916.319.2007				Introduced: 12/3/18 Amended: 3/26/19 Committee on Education
1	AB 124 (McCarty, Berman, Bonta, Burke, Carrillo, Chiu, Friedman, Eduardo Garcia, Gonzalez, Limón, Reyes, Santiago, Ting, & Wicks)	Enacts the Preschool Facilities Bond Act of 2020. Authorizes the issuance of bonds in the amount of \$500,000,000 pursuant to the State General Obligation Bond Law to finance a preschool facility grant program.		Suzy Costa 916.319.2007		Advancement Project CA, EveryChild CA, Early Edge CA		Introduced: 12/3/18 Committee on Education

Level of Interest¹	Bill Number (Author)	Brief Description	Sponsor	Contact	County Position	Support	Oppose	Status (As of 4/9/19)
1	AB 125 (McCarty, Berman, Bonta, Burke, Carrillo, Chiu, Friedman, Eduardo Garcia, Gonzalez, Limón, Reyes, Santiago, Ting, & Wicks)	<i>Would require the Superintendent of Public Instruction (SPI) to implement a reimbursement system that establishes reasonable standards and assigned reimbursement rates that vary based on certain factors. In addition, would require the CDE to create the Quality Counts CA Pilot Reimbursement Program targeted to 5 alternative payment child care systems to allow child care providers to receive higher reimbursement rates based on meeting standards of quality. Additional proposals to the reimbursement system are included in the bill.</i>	First 5 CA, California Federation of Teachers, Child Care Resource Center	Suzy Costa 916.319.2007		CAPPA, CA Coalition for Early Learning, CA Family Resource Assoc, CCALA, Children Now, Community Child Care Council of Sonoma County, EveryChild CA, First 5s of Lake, Sacramento, San Benito, San Bernardino, and Santa Clara counties, Fraser Communications, UDW/AFSCME Local 3930 United Domestic Workers Of America-AFSCME Local 3930/AFL-CIO		Introduced: 12/3/18 Amended: 3/11/19 Amended: 4/1/19 Committee on Human Services Hearing: 4/9/19
Watch	AB 151 (Voepel)	Amends existing law regarding eligibility for student financial aid under the CalGrant Program under the California Community College Transfer Entitlement Program. Raises the age limit for eligibility from up to 28 to up to 30 years of age.						Introduced: 1/7/19 Committee on Higher Education
1	AB 167 (Rubio)	Would create the CA Partnerships for Infants and Toddlers to provide <i>supplemental</i> grants of \$4000 per child annually to qualifying child care and development programs and family child care that serve children from birth to three years old. <i>The grantee must agree to meet federal Head Start program performance standards and provide full-day, full-year childcare.</i>	Kidango, Children's Defense Fund-CA, ZERO TO THREE	Taylor Woolfork Taylor.Woolfork@asm.ca.gov 916.319.2048		AAP-CA, Assoc of Regional Center Agencies, CA Assoc of Food Banks, CFPA, CA PTA, Coalition of CA Welfare Rights Orgs, Early Edge CA, Fight Crime: Invest In Kids, Friends Committee on Legislation of CA, Local Early Education Planning Council of Santa Clara County, Mission: Readiness, NASW-CA Chapter, ReadyNation, Partners in Early Learning, The Children's Partnership, United Way of CA, & more		Introduced: 1/8/19 Amended: 3/11/19 Amended: 4/3/19 Committee on Human Services Hearing: 4/9/19 Committee on Education

Level of Interest¹	Bill Number (Author)	Brief Description	Sponsor	Contact	County Position	Support	Oppose	Status (As of 4/9/19)
Spot Bill 1	AB 194 (Reyes)	<i>Would provide that \$1 billion, upon appropriation by the legislature, be made available to immediately improve access to alternative payment programs and general childcare and development programs that subsidize services for low-income families.</i>	Child Care Resource Center, Child Care Law Center, California Alternative Payment Program, Parent Voices	Amer Rashid Amer.rashid@asm.ca.gov 916.319.2047		CFPA	CAEYC, CCCRRN, CFPA, CWLC, CLASP, CCALA, Child360, Crystal Stairs, Connections for Children, Early Edge CA, First 5 CA, First 5 LA, Internat'l Inst of LA, Kidango, NWLC, ReadyNation, SEIU-CA, WCLP & many, many more	Introduced: 1/10/19 Amended: 3/19/19 Committee on Human Services Hearing: 4/9/19
1	AB 196 (Gonzalez)	<i>Would revise the formula for determining benefits available through the family temporary disability insurance program, for periods of disability commencing as of 1/1/20, by redefining the weekly benefit amount to be equal to 100% of the wages paid to an individual for employment by employers during the quarter of the individual's disability base period in which these wages were highest, divided by 13, but not exceeding the maximum workers' compensation temporary disability indemnity weekly benefit amount established by the Dept of Industrial Relations.</i>		Shubhangi Domokos Shubhangi.Domokos@asm.ca.gov 916.319.2080				Introduced: 1/10/19 Amended: 3/26/19 Committee on Insurance Hearing: 4/24/19

Level of Interest¹	Bill Number (Author)	Brief Description	Sponsor	Contact	County Position	Support	Oppose	Status (As of 4/9/19)
1	AB 197 (Weber)	Would require, commencing with the 2022-23 school year, school districts offering kindergarten <i>and charter schools serving pupils in primary grades</i> to implement a full-day kindergarten program. Would provide that a minimum school day for full-day kindergarten is the same number of minutes per school day that is offered to 1 st grade pupils. <i>Intent of the Legislature that 1st priority for implementation of full-day kindergarten before 7/1/22 go to schools receiving federal Title I funds.</i>		Victoria Harris victoria.harris@asm.ca.gov 916-319-2079				Introduced: 1/10/19 Amended: 3/20/19 Committee on Education Passed on 3/13/19 and referred to: Committee on Appropriations Suspense File
Watch	AB 220 (Bonta)	Would amend Political Reform Act of 1974 by allowing candidates running for political office to use campaign funds to pay for child care provided for a candidate's dependent child if the costs are incurred as a direct result of campaign activity.		Alma Barreras Alma.Barreras@asm.ca.gov 916.319.2018				Introduced: 1/16/19 Committee on Elections and Redistricting Hearing: 5/1/19
Watch	AB 225 (Brough)	Would amend Political Reform Act of 1974 by allowing candidates running for political office to use campaign funds to pay for child care provided for a candidate's dependent child if the costs are incurred as a direct result of campaign activity.						Introduced: 1/16/19 Committee on Elections and Redistricting
Spot Bill Watch	AB 244 (Voepel)	Expresses legislative intent to raise the CalGrant Program awards from \$10,000 to \$15,000 annually.						Introduced: 1/18/19

Level of Interest¹	Bill Number (Author)	Brief Description	Sponsor	Contact	County Position	Support	Oppose	Status (As of 4/9/19)
Spot Bill 1	AB 324 (Aguilar-Curry)	<p>Would delete the requirements of the Budget Act that allows Los Angeles County's local child care and development planning council (LPC) to use unexpended stipend program funds for persons working in licensed programs that serve a majority of children receiving subsidized services; would allocate those funds to alternative payment program (APP) agencies for the same purposes. Would require the CDE, by 1/1/21, to develop guidelines for LPCs and APP agencies in developing unified plans in coordination with the local Quality Counts CA county consortium. Sets forth requirements to be met by the plans, including: no more than one professional support stipend plan per county with the signatures of the LPCs, APP agencies and local Quality Counts consortia members, stipends to be available for child care providers across program types and settings, and more. <i>Adds to findings and declarations, expressing intent to assist Quality Counts CA's QRIS local consortia to support all quality child care providers who work directly with children receiving subsidized services and support the diversity of the early care and education system.</i></p>	First 5 CA	<p>Itzel Vasquez-Rodriguez ltzel.vasquez-rodriquez@asm.ca.gov 916.319.2004 x2282</p>		<p>CAPPA, CA Family Resource Association, CCALA, CCRC, Child360, Community Child Care Council of Sonoma County, First 5 LA, First 5, Lake County First 5 Sacramento, First 5 San Benito, First 5 San Bernardino, First 5 Solano Children and Families Commission, First 5 Yolo, Fraser Communications, United Domestic Workers of America-AFSCME Local 3930/AFL-CIO, United Ways of California</p>		<p>Introduced: 1/30/19 Amended: 3/20/19 Amended: 4/2/19</p> <p>Passed Committee on Human Services on 3/26/19 to:</p> <p>Committee on Appropriations</p>

Level of Interest¹	Bill Number (Author)	Brief Description	Sponsor	Contact	County Position	Support	Oppose	Status (As of 4/9/19)
Watch	AB 347 (Choi)	Would, until 1/1/2025, authorize the CDE, as part of a pilot program, to accept monetary contributions made to a newly created CA Preschool Investment Fund by a person for purposes of preschool education. Money to be used to fund preschools that are part of the CA state preschool program (CSPP) located in one of the 5 counties participating in the pilot program to be administered by the county's LPCs. Participating counties to report to the CDE's Early Learning and Care Division (ELCD) regarding the county's assessment of the pilot's performance. Any moneys remaining in the fund after 1/1/2025 to be transferred to any other state fund identified by the CDE that provides funding for increased access to preschool programs for low-income children.		Nicolas Gauthier Nicolas.gauthier@asm.ca.gov		CAPPA, CA Catholic Conference		Introduced: 2/4/19 Amended: 3/19/19 Committee on Revenue and Taxation
Watch	AB 367 (Flora)	Would enumerate additional crimes that prohibit the CA Department of Social Services (DSS) from authorizing an individual from working or otherwise being present at licensed care facilities (inclusive of child care facilities,) including, among other crimes, the willful and unlawful use of personal identifying information.						Introduced: 2/4/19 Committee on Human Services Hearing: 4/23/19

Level of Interest¹	Bill Number (Author)	Brief Description	Sponsor	Contact	County Position	Support	Oppose	Status (As of 4/9/19)
Watch	AB 372 (Voepel)	Would authorize a state agency to adopt an Infant at Work program to allow an employee who is a new parent or caregiver to an infant to bring the infant to the workplace. Would authorize a state agency to adopt regulations that it determines necessary to establish the program, yet prohibit a state agency from adopting the program in circumstances that are inappropriate based on safety, health, or other concerns for the infant or adult.						Introduced: 2/5/19 Committee on Public Employment and Retirement Hearing: 4/3/19
1	AB 378 (Limón)	Would create the Building a Better Early Care and Education System Act. Would authorize family child care (FCC) providers (licensed and license-exempt) to form, join, and participate in the activities of provider organizations and to seek the certification of a provider organization to act as the representative for FCC providers on matters related to child care subsidy programs pursuant to a petition and election process overseen by the Public Employment Relations Board or a neutral 3rd party designated by the board.	SEIU, AFSCME	Elizabeth Fuller Elizabeth.Fuller@asm.ca.gov 916.319.3564 Mariana Sabeniano Mariana.Sabeniano@asm.ca.gov 916.319.2037				Introduced: 2/5/19 Committee on Labor and Employment Hearing: 4/23/19

Level of Interest¹	Bill Number (Author)	Brief Description	Sponsor	Contact	County Position	Support	Oppose	Status (As of 4/9/19)
Watch	AB 406 (Limón)	<i>Would require the Employment Development Dept. to distribute the application for family temporary disability insurance benefits application in English and all non-English languages spoken by a substantial number of non-English-speaking applicants.</i>		Liz Fuller Elizabeth.fuller@asm.ca.gov 916.319.3564		CAPPA		Introduced: 2/7/19 Amended: 3/26/19 Committee on Insurance Hearing: 4/24/19
1	AB 452 (Mullin)	<i>Would repeal the Child Care Facilities Revolving Fund loan program and require all moneys in the program as of December 31, 2019 to be transferred to the California Childcare Facilities Grant Fund. Would require the CDE to award grants of up to \$1M, upon appropriation by the Legislature for this purpose, to eligible entities for the renovation, repair, modernization, purchase, or construction of childcare facilities, portable classrooms, or buildings.</i>		Miriam Farouk, miriam.farouk@asm.ca.gov 916.319.2022		CA Coalition for Early Learning, CA Head Start, Disability Rights CA, Early Edge CA, EveryChild CA, First 5 CA, Office of the Riverside County Superintendent of Schools, Riverside County Public K-12 School District Superintendents		Introduced: 2/11/19 Amended: 3/21/19 Committee on Human Services Hearing: 4/9/19

Level of Interest¹	Bill Number (Author)	Brief Description	Sponsor	Contact	County Position	Support	Oppose	Status (As of 4/9/19)
	AB 776 (Kalra)	Would state legislative intent that the longitudinal education data system support a system of learning from birth to higher education through career. In addition to the current requirement for the CDE requirement to establish a process for local educational agencies (LEAs) to issue, maintain, and report information using a unique statewide pupil identifier for state and federally funded center-based childcare and development programs, would enable a county office of education to issue and submit a unique statewide pupil identifier to the CDE on behalf of any applicant or contracting agency that is not a LEA and that is operating a state-funded childcare and development program within that county.				Children Now, Santa Clara County Office of Education	California Right to Life Committee, Inc.	Introduced: 2/19/19 Amended: 3/26/19 Committee on Education Hearing: 4/10/19
Watch	AB 809 (Santiago)	Would require public postsecondary institutions to: 1) provide notification of protections under Title IX for pregnant and parenting students; and 2) encourage child development programs established by CA Community Colleges, the CA State University, and the University of CA to give specified priority to children of students who are unmarried and meeting certain income requirements.		Stephanie Gerstle Stephanie.Gerstle@asm.ca.gov 916.319.2053		CA Catholic Conference		Introduced: 2/20/19 Passed Committee on Higher Education on 4/2/19 to: Committee on Appropriations

Level of Interest¹	Bill Number (Author)	Brief Description	Sponsor	Contact	County Position	Support	Oppose	Status (As of 4/9/19)
Watch	AB 842 (Limón & Eggman)	Would require: 1) the reimbursement rate for meals served in schools and child care centers and homes to be set at an equivalent rate; 2) would require a school district, county <i>superintendent of schools</i> , or charter school maintaining a child care and development program to provide each needy child that attends program with one nutritionally adequate free or reduced-price meal during each program day; 3) authorize a child care and development program, in order to prevent hunger by providing nutritious meals to children, to use funds made available to the program through any federal or state program the purpose of which includes the provision of meals to a child, or to do so at the expense of the child care and development program; 4) require each part-day and full-day CSPP to provide each child enrolled in the program access to at least 1 or 2 nutritious meals per day; and 5) <i>require a child development program to comply with nutrition-related prohibitions and requirements to qualify for reimbursement for free and reduced-price meals.</i>	California Food Policy Advocates	Melissa Cannon melissa@cfpa.net 510.533.1122 x102		Alameda County Community Food Bank, AAP-CA, CAPP, CA Association of Food Banks, CA Catholic Conference, CCCRRN, CA Family Childcare Network, CA Food & Farming Network, CCLC, Child Development Associates, Child Development Resources of Ventura County, Inc., Childcare Business Institute, Children's Council San Francisco, United Domestic Workers of America-AFSCME Local 3930/AFL-CIO United Families, Inc., WCLP, Yee Children's Service, and many more		Introduced: 2/20/19 Amended: 4/2/19 Passed Committee on Education on 3/27/19 to: Committee on Appropriations

Level of Interest¹	Bill Number (Author)	Brief Description	Sponsor	Contact	County Position	Support	Oppose	Status (As of 4/9/19)
Spot Bill 1	AB 1001 (Ting)	Expresses legislative intent to appropriate a total of \$10 million annually for local child care and development planning councils (LPCs). Would amend existing law pertaining to the local child care and development planning councils by: 1) specifying the composition of the LPCs; 2) requiring LPCs to encourage public input on the development of local priorities and foster partnerships to address local child care needs; 3) identifying facilities for the provision of child care services; and more.	California County Superintendents Educational Services Association	Christian Griffith 916.319.2019		Kidango, UDW/AFSCME Local 3930		Introduced: 2/21/19 Committee on Human Services Hearing: 4/9/19
	AB 1012 (Gómez)	<i>Would establish the CA Exemplary Bilingual and Biliteracy Program under the CA School Recognition Program administered by the CDE to recognize exemplary dual language or dual immersion programs in licensed child development programs and in elementary and secondary schools that promote dual language development and biliteracy.</i>	CA Association of Bilingual Educators, Californians Together, Early Edge CA, Advancement Project	Amer Rashid Amer.rashid@asm.ca.gov 916.319.2047		CA Language Teachers' Association, Kidango, Momsrising, Teach Plus, over 900 letters from individuals		Introduced: 2/21/19 Amended: 3/14/19 Committee on Education Hearing: 4/10/19

Level of Interest¹	Bill Number (Author)	Brief Description	Sponsor	Contact	County Position	Support	Oppose	Status (As of 4/9/19)
Watch	AB 1059 (Burke)	<i>Would extend the Lifting Children and Families Out of Poverty Task Force to 1/1/22. Would require the task force to examine the feasibility of developing and codifying the CA Poverty Measure, as established by the Stanford Center on Poverty and Inequality and the Public Policy Institute of CA. Would require the task force to report its findings and recommendations to the Legislature by 1/1/21.</i>						Introduced: 2/21/19 Amended: 3/27/19 Committee on Human Services
3	AB 1081 (Gallagher)	Would authorize any ASES funds remaining after awarding grants to operate before and after school programs serving pupils in kindergarten to grade 9 to be distributed to areas that have been affected by natural disasters.		Katja Townsend Katja.townsend@asm.ca.gov 916.319.2003		Boys & Girls Clubs of the North Valley, Butte COE, County of Butte Paradise USD, Shasta COE		Introduced: 2/21/19 Passed Committee on Education on 3/27/19 to: Committee on Appropriations Hearing: 4/10/19
3	AB 1085 (McCarty)	Would authorize for inclusion within the educational enrichment element of ASES and 21 st Century Community Learning Centers (CLCs) youth development activities that promote healthy choices and behaviors prevent and reduce substance use and improve school retention and performance,				A World Fit For Kids, ARC Berkeley PTA Council, Boys & Girls Clubs of Carson, CA Afterschool Network, CA Alliance of Boys & Girls Clubs Inc., CA State Alliance of YMCAs, CA State PTA, Citizen Schools, Educare Foundation Escuela Popular, Fight Crime: Invest In Kids, Give Every Child A Chance. Glendale USD, LA's Best After School Enrichment Program, LAUSD, Partnership For Children & Youth, Pasadena Learns After School Program, The Children's Initiative, Think Together Woodcraft Ranger, & more		Introduced: 2/21/19 Amended: 4/2/19 Committee on Health Hearing: 4/9/19

Level of Interest¹	Bill Number (Author)	Brief Description	Sponsor	Contact	County Position	Support	Oppose	Status (As of 4/9/19)
1	AB 1109 (Fong)	Would, until 1/1/2025, authorize the CDE, as part of a pilot program, to accept monetary contributions made to a newly created CA Preschool Investment Fund by a person for purposes of preschool education. Money to be used to fund preschools that are part of the CA state preschool program (CSPP) located in one of the 5 counties participating in the pilot program to be administered by the county's LPCs. Participating counties to report to the CDE's Early Education and Support Division regarding the county's assessment of the pilot's performance. Any moneys remaining in the fund after 1/1/2025 to be transferred to any other state fund identified by the CDE that provides funding for increased access to preschool programs for low-income children.						Introduced: 2/21/19 Committee on Revenue and Taxation

Level of Interest¹	Bill Number (Author)	Brief Description	Sponsor	Contact	County Position	Support	Oppose	Status (As of 4/9/19)
3	AB 1114 (Aguiar-Curry)	Would, until 1/1/23, require the CDSS to implement a 2-year pilot project to evaluate the effectiveness of crisis nurseries in both the Counties of Contra Costa, Nevada, Sacramento and Yolo <i>on the outcomes for children and families</i> , including the incidence of child abuse and <i>neglect</i> in those counties. Would require the CDSS to report the results of its study to the Legislature. Would declare the intent of the Legislature to provide funding for crisis nurseries.	County of Yolo			County of Sacramento, First 5 Sacramento, Sacramento Children's Home		<p>Introduced: 2/21/19 Amended: 3/20/19 Amended: 4/2/19</p> <p>Passed Committee on Human Services on 3/26/19 to:</p> <p>Committee on Appropriations Hearing: 4/10/19</p>
Watch	AB 1256 (Bonta)	Would require the SPI to provide a report to the Legislature and the Governor, no later than 1/1/21, with recommendations to guide state policy on learning readiness measures. Recommendations to include feedback of CA early childhood stakeholders, local, statewide, and international research and best practices for measuring learning readiness, and how to use that measure to influence strategic policy for children and families.						<p>Introduced: 2/21/19</p> <p>Committee on Education</p>
	AB 1716 (Kiley)	Would require family child care home education network contractors to offer providers at least 12 hours annually of training and technical assistance in group or individual settings on a variety of topics.						<p>Introduced: 2/22/19</p> <p>Committee on Human Services</p> <p>Committee on Education</p>

Level of Interest¹	Bill Number (Author)	Brief Description	Sponsor	Contact	County Position	Support	Oppose	Status (As of 4/9/19)
2	AB 1725 (Carillo)	Would continuously appropriate an additional \$112,800,000 from the General Fund to the CDE in the 2019–20 fiscal year for purposes of the ASES program. Would continuously appropriate each fiscal year thereafter to the CDE an amount necessary to fund an increase in the daily per-pupil rate equal to the higher of either 50% of specified increases to the minimum wage or the percentage increase to the CA Consumer Price Index, as determined by the Department of Finance. Would require CDE to increase the maximum grant amounts and daily per-pupil funding rates in accordance with the total amount appropriated for the program in the 2019–20 fiscal year, and in each fiscal year thereafter.						Introduced: 2/22/19 Committee on Education
Watch	ACR 1 (Bonta)	Would condemn regulations proposed by the Department of Homeland Security to prescribe how a determination of an alien's inadmissibility for a person who is not a citizen or national is made based on the likelihood that the person will become a public charge. Would also urge the federal government to reconsider and roll back the proposed regulations.				ACLU of CA, Assoc of Regional Center Agencies, CA Associ of Food Banks, CFPA, CA Immigrant Policy Center, CA Pan - Ethnic Health Network, CAhealth+ Advocates, CDF-CA, CHIRLA, County Behavioral Health Directors Assoc, County of Monterey, Disability Rights CA, First 5 LA, Inland Coalition for Immigrant Justice, Justice in Aging, LAUSD, NILC, WCLP		Introduced: 12/3/18 Amended: 3/6/19 Revised: 3/21/19 In Senate Committee on Human Services

Level of Interest¹	Bill Number (Author)	Brief Description	Sponsor	Contact	County Position	Support	Oppose	Status (As of 4/9/19)
California Senate Bills								
1	SB 2 (Glazer & Allen)	Expresses legislative intent to establish the Statewide Longitudinal Student Database to 1) collect and store data regarding individual students as they matriculate through P-20 and into the workforce; and 2) encourage education stakeholders, including, but not limited to, the segments of postsecondary education, the CDE, school districts, COEs, schools, school teachers and administrators, policymakers, and the community to use such data to develop innovative approaches, services, and programs that may have the potential to deliver education that is cost effective and responsive to the needs of students. * P=preschool				CA Competes, Campaign for College Opportunity, Education Trust – West, Institution for College Access and Success, Public Advocates, Southeast Asia Resource Action Center, Student Senate for CA, Community Colleges, Teach Plus, University of CA Student Association		Introduced: 12/3/18 Passed Committee on Education on 4/3/19 to: Committee on Appropriations
Watch	SB 26 (Caballero)	Would amend the Personal Income Tax Law by restoring the refundable tax credit relating to expenses for household and dependent care services necessary for gainful employment. <i>Amendments include clarifying, technical language.</i>		Enedina Garcia Enedina.garcia@sen.ca.gov 916.651.4102		CCCCRN, Community Child Care Council of Sonoma County.		Introduced: 12/3/18 Amended: 3/18/19 Passed Committee on Governance and Finance on 4/3/18 to: Committee on Appropriations Hearing: 4/22/19
1	SB 135 (Jackson)	Would expand the scope and definition of CA's family care and medical leave laws and to create more equitable access to California's family leave programs.	California Employment Lawyers Association, First 5 California, Legal Aid at Work			A Stronger CA, AARP-CA, ACLU – CA, Alzheimer's Assoc, Bet Tzedek Legal Services, Breastfeed LA, CTA, Equal Rights Advocates, CA Breastfeeding Coalition, CCCRRN, CFPA, CCLC, MCAH, and many more		Introduced: 1/15/18 Amended: 3/25/19 Committee on Labor, Public Employment and Retirement Hearing: 4/10/19

Level of Interest¹	Bill Number (Author)	Brief Description	Sponsor	Contact	County Position	Support	Oppose	Status (As of 4/9/19)
1	SB 174 (Leyva)	Would amend several sections of the CA Education Code pertaining to the reimbursement rate system. Among the amendments, would require the SPI to implement a reimbursement system, adjust regional market rate ceilings, require updates to the regional market rate survey, and require the CDE to create the Quality Counts CA Pilot Reimbursement Program with a pilot for implementation by up to 5 Alternative Payment Program agencies.	First 5 LA	Jessica Golly/Rochelle Schmidt Jessica.Golly@sen.ca.gov Rochelle.Schmidt@sen.ca.gov		Child Care Resource Center, First 5 CA, EveryChild CA		Introduced: 1/28/19 Amended: 3/20/19 Committee on Education Hearing: 4/24/19
Watch	SB 217 (Portantino & Roth)	Would require, for the 2019–20 school year and each school year thereafter, a school district or charter school to admit a child to a transitional kindergarten (TK) program who will have their 5th birthday after December 2 but during that same school year if the child is an individual with exceptional needs. Would establish the Special Education Early Intervention Grant Program, and require as part of that program, subject to an appropriation in the annual Budget Act or another statute, the SPI to allocate to school districts \$4,000 per child within the school district of residence who is 3 or 4 years of age, is an individual with exceptional needs <i>receiving special education or related services</i> .		Tara McGee Tara.McGee@sen.ca.gov 916.651.4025				Introduced: 2/6/19 Amended: 4/1/19 Committee on Education Hearing: 4/10/19

Level of Interest¹	Bill Number (Author)	Brief Description	Sponsor	Contact	County Position	Support	Oppose	Status (As of 4/9/19)
2	SB 234 (Skinner)	Would require a large family child care home (FCCH) to be treated as a residential use of property for purposes of all local ordinances. Would also make void an attempt to deny, restrict, or encumber the conveyance, leasing, or mortgaging of real property for use or occupancy as a FCCH and a restriction related to the use or occupancy of the property as a FCCH. Would prohibit a property owner or manager from refusing to sell or rent or refusing to negotiate for the sale or rental of, or otherwise making unavailable or denying, a <i>home</i> to a person because that person is a FCCH provider. Would require the CDSS to notify <i>applicants for family daycare home licenses</i> that specified housing discrimination remedies are available to a FCCH provider, FCCH applicant, or person who is claiming that any of these protections have been denied.	California Child Care Resource and Referral Network, Child Care Law Center, SEIU, United Domestic Workers of America-AFL-CIO, AFSCME-UDW			Alexander Child Care & Preschool, Bananas INC., Build Up for San Mateo County's Children, CAPP, CA Family Child Care Network, CA State Council of Service Employees, CA Women's Law Center, Children Now, Community Action Partnership of San Luis Obispo County, Community Child Care Council of Sonoma, County Equal Rights Advocates, Nat'l Council of Jewish Women (NCJW) CA, Public Counsel, WCLP & more		Introduced: 2/7/19 Amended: 3/21/19 Senate Floor

Level of Interest¹	Bill Number (Author)	Brief Description	Sponsor	Contact	County Position	Support	Oppose	Status (As of 4/9/19)
1	SB 321 (Mitchell)	Would increase access to child care supportive services for welfare-to-work participants by requiring that the child care be full-time unless the participant determines that part-time care better meets the family's needs, requiring 1 st -stage childcare to be authorized for one year, or until the participant is transferred to the 2 nd stage of child care, and prohibiting the 1 st stage or the 2 nd stage of child care services from being discontinued until confirmation is received from the administrator of the subsequent stage of child care that the family has been enrolled or that the family is ineligible for services in the subsequent stage of child care. This bill would require that the participant be informed of the availability of the services upon enrollment in the CalWORKs program and at later times when a participant expresses a need for child care.	Child Care Law Center, Parent Voices CA	Bridget Kolakosky bridget.kolakosky@sen.ca.gov (916) 651-4030		AFSCME/AFL-CIO, Bay Area Equal Voice Coalition, CAPP, CA Catholic Conference, CCRRN, CA Labor Federation, AFL-CIO, CWLC, CLASP, CCRC, CCALA, Child360, Children Now, Coalition of CA Welfare Rights Organizations, First 5 CA, Kidango, Public Interest Law Project, WCLP and many more		Introduced: 2/15/19 Amended: 4/1/19 Committee on Human Services

Level of Interest¹	Bill Number (Author)	Brief Description	Sponsor	Contact	County Position	Support	Oppose	Status (As of 4/9/19)
Watch	SB 346 (Jackson)	Would establish the Distinguished After School Health (DASH) Recognition Program, to be administered by the CDE. Would require the development of an <i>application process</i> for recognizing afterschool programs for meeting certain requirements, including training staff on healthy eating and physical activity, providing healthy food and drinks to program attendees, and providing program attendees with physical activity and limited screen time.				AAP-CA, American Cancer Society Cancer Action Network, CA State Alliance of YMCAs		Introduced: 2/19/19 Amended: 3/25/19 Passed Committee on Education on 4/3/19 to: Committee on Appropriations Hearing: 4/22/19
1	SB 421 (Pan)	Would establish the Children's Cabinet of CA to consist of the SPI, the Secretary of CA Health and Human Services, and the head of each agency and department within the state that provides services for, or has jurisdiction over the well-being of, children, and would set forth its powers and duties, including promoting and implementing information sharing, collaboration, increased efficiency, and improved service delivery among and within the state's child-serving agencies, departments, and organizations.		Melissa Bardo Melissa.Bardo@sen.ca.gov 916.651.4006				Introduced: 2/21/19 Committee on Human Services Hearing: 4/8/19
1	SB 443 (Rubio)	Would delete the provision that prohibits a pupil admitted to a TK who has their birthday after December 2 from generating average daily attendance or being included in the enrollment or unduplicated pupil count.	West Covina Unified School District	Nathaly Teran Nathaly.teran@sen.ca.gov 916.651.4022				Introduced: 2/21/19 Passed Committee on Education on 4/3/19 to: Committee on Appropriations Hearing: 4/22/19

Level of Interest ¹	Bill Number (Author)	Brief Description	Sponsor	Contact	County Position	Support	Oppose	Status (As of 4/9/19)
Watch	SB 614 (Rubio)	Would establish the Inclusive Early Childhood Education Grant Program to increase access to early childhood education programs. <i>Would delay implementation of these provisions until 1/25/20.</i>						Introduced: 2/22/19 Amended: 4/1/19 Committee on Education Hearing: 4/10/19
California Budget Bills (including Trailer Bills)								
	AB 190 (Ting)	Budget Act of 2019						Introduced: 1/10/19 Committee on Budget
	SB 73 (Mitchell)	Budget Act of 2019						Introduced: 1/10/19 Committee on Budget & Fiscal Review
	Budget Trailer Bill Language (TBL)	Education Omnibus Trailer Bill – addresses state preschool wraparound care eligibility						
	TBL	Emergency Child Care Bridge Program for Foster Children – Reimbursement for Live Scan and application fee for prospective license exempt providers						
	TBL	Child Care and Early Learning Strategic Plan, Child Care Infrastructure Grants, and Child Care Workforce Development Grants						
	TBL	Eliminates fingerprint licensing fee exemption						

To obtain additional information about any State legislation, go to <http://leginfo.legislature.ca.gov/>; for Federal legislation, visit <http://thomas.loc.gov>. To access budget hearings on line, go to www.calchannel.com and click on appropriate link at right under “Live Webcast”. Links to Trailer Bills are available at http://www.dof.ca.gov/budgeting/trailer_bill_language/. For questions or comments regarding this document, contact Michele Sartell, Staff with the Office for the Advancement of Early Care and Education, by e-mail at msartell@ph.lacounty.gov or call (213) 639-6239.

KEY TO LEVEL OF INTEREST ON BILLS:

1: Of potentially high interest to the Child Care Planning Committee and Policy Roundtable for Child Care.

2: Of moderate interest.

3: Of relatively low interest.

Watch: Of interest, however level of interest may change based on further information regarding author’s or sponsor’s intent and/or future amendments.

** Levels of interest are assigned by the Joint Committee on Legislation based on consistency with Policy Platform accepted by the Child Care Planning Committee and Policy Roundtable for Child Care and consistent with County Legislative Policy for the current year. Levels of interest ***do not*** indicate a pursuit of position. Joint Committee will continue to monitor all listed bills as proceed through legislative process. Levels of interest may change based on future amendments.

KEY:

AAP	American Academy of Pediatrics	CTC	Commission on Teacher Credentialing
ACLU	American Civil Liberties Union	COE	County Office of Education
AFSCME:	American Federation of State, County and Municipal Employees	CWDA	County Welfare Directors' Association
CAPPA	California Alternative Payment Program Association	DDS	Department of Developmental Services
CAEYC	California Association for the Education of Young Children	DHS	Department of Health Services
CAFB	California Association of Food Banks	DOF	Department of Finance
CCCCA	California Child Care Coordinators Association	DMH	Department of Mental Health
CCRRN	California Child Care Resource and Referral Network	First 5 CA	First 5 Commission of California
CCDAA	California Child Development Administrators Association	HHSA	Health and Human Services Agency
CDA	California Dental Association	LCC	League of California Cities
CDE	California Department of Education	LAC CPSS	Los Angeles County Commission for Public Social Services
CDSS	California Department of Social Services	LACOE	Los Angeles County Office of Education
CFT	California Federation of Teachers	LAUSD	Los Angeles Unified School District
CFPA	California Food Policy Advocates	MALDEF	Mexican American Legal Defense and Education Fund
CHAC	California Hunger Action Coalition	NASW	National Association of Social Workers
CIWC	California Immigrant Welfare Collaborative	NCYL	National Center for Youth Law
CSAC	California School-Age Consortium	PG&E	Pacific Gas and Electric Company
CSAC	California State Association of Counties	SEIU	Service Employees International Union
CTA	California Teachers Association	SPI	Superintendent of Public Instruction
CCALA	Child Care Alliance of Los Angeles	TCI	The Children's Initiative
CCLC	Child Care Law Center	US DHHS	US Department of Health and Human Services
		WCLP	Western Center on Law and Poverty

DEFINITIONS:²

Committee on Rules	Bills are assigned to a Committee for hearing from here.
Consent Calendar	A set of non-controversial bills grouped together and voted out of a committee or on the floor as a package.
First Reading	Each bill introduced must be read three times before final passage. The first reading of a bill occurs when it is introduced.
Held in Committee	Status of a bill that fails to receive sufficient affirmative votes to pass out of committee.
Held under Submission	Action taken by a committee when a bill is heard and there is an indication that the author and the committee members want to work on or discuss the bill further, but there is no motion for the bill to progress out of committee.
Inactive File	The portion of the Daily File containing legislation that is ready for floor consideration, but, for a variety of reasons, is dead or dormant. An author may move a bill to the inactive file, and move it off the inactive file at a later date. During the final weeks of the legislative session, measures may be moved there by the leadership as a method of encouraging authors to take up their bills promptly.
On File	A bill on the second or third reading file of the Assembly or Senate Daily File.
Second Reading	Each bill introduced must be read three times before final passage. Second reading occurs after a bill has been reported to the floor from committee.
Spot Bill	A bill that proposes non-substantive amendments to a code section in a particular subject; introduced to assure that a bill will be available, subsequent to the deadline to introduce bills, for revision by amendments that are germane to the subject of the bill.
Third Reading	Each bill introduced must be read three times before final passage. Third reading occurs when the measure is about to be taken up on the floor of either house for final passage.
Third Reading File	That portion of the Daily File listing the bills that is ready to be taken up for final passage.
Urgency Measure	A bill affecting the public peace, health, or safety, containing an urgency clause, and requiring a two-thirds vote for passage. An urgency bill becomes effective immediately upon enactment.
Urgency Clause	Section of bill stating that bill will take effect immediately upon enactment. A vote on the urgency clause, requiring a two-thirds vote in each house, must precede a vote on bill.
Enrollment	Bill has passed both Houses, House of origin has concurred with amendments (as needed), and bill is now on its way to the Governor's desk.

² Definitions are taken from the official site for California legislative information, Your Legislature, Glossary of Legislative Terms at www.leginfo.ca.gov/guide.html#Appendix_B.

STATE LEGISLATIVE CALENDAR 2019 (Tentative)³

January 1	Statutes take effect (Art. IV, Sec. 8(c)).
January 7	Legislature reconvenes (J.R. 51(a)(1)).
January 10	Budget Bill must be submitted by Governor (Art. IV, Sec. 12(a)).
January 21	Martin Luther King Jr. Day Observed
January 25	Last day to submit bill requests to the Office of Legislative Counsel.
February 18	President's Day Observed
February 22	Last day for bills to be introduced (J.R. 61(a)(1), J.R. 54 (a)).
March 29	Cesar Chavez Day observed.
April 11	Spring Recess begins upon adjournment (J.R. 51 (a) (2)).
April 22	Legislature reconvenes from Spring Recess (J.R. 51(b)(1)).
April 26	Last day for policy committees to meet and report to the fiscal committees fiscal bills introduced in their house (J.R. 61(a)(3)).
May 3	Last day for policy committees to meet and report to the floor non-fiscal bills (J.R. 61(a)(3)).
May 10	Last day for policy committees to meet prior to June 3 (J.R. 61(a)(4)).
May 17	Last day for fiscal committees to hear and report bills to the floor bills introduced in their house (J.R. 61(a) (5)). Last day for fiscal committees to meet prior to June 3 (J.R. 61(a) (6)).
May 27	Memorial Day observed.
May 28-31	Floor Session Only. No committee may meet for any purpose except for Rules Committee, bills referred pursuant to A.R. 77.2, and Conference Committees (J.R. 61(a) (7)).
May 31	Last day for each house to pass bills introduced in that house (J.R. 61(a) (8)).
June 3	Committee meetings may resume (J.R. 61(a)(9)).
June 15	Budget Bill must be passed by midnight (Art. IV, Sec. 12(c)(3)).
July 4	Independence Day observed.
July 10	Last day for policy committees to hear and report fiscal bills to fiscal committees (J.R. 61(a)(10)).
July 12	Last day for policy committees to meet and report bills (J.R. 61(a)(11)). Summer recess begins upon adjournment, provided the Budget Bill has been passed (J.R. 51(a)(3)).
August 12	Legislature reconvenes from Summer Recess (J.R. 51(a)(3)).
August 30	Last day for fiscal committees to meet and report bills (J.R. 61(a)(12)).
Sept 2	Labor Day
Sept 3-13	Floor session only. No committees may meet for any purpose, except Rules Committee, bills referred pursuant to A.R. 77.2. and Conference Committees (J.R. 61(a)(13)).
Sept 6	Last day to amend bills on the floor (J.R. 61(a) (14)).
Sept 13	Last day for any bill to be passed (J.R. 61(a) (15)). Interim recess begins upon adjournment (J.R. 51(a) (4)).

2020

Jan. 1 Statutes take effect (Art. IV, Sec. 8(c)).

Jan. 3 Legislature reconvenes (J.R. 51 (a)(4)).

*Holiday schedule subject to final approval by Rules Committee.

³ 2019 Legislative Deadlines. Retrieved on January 10, 2019 from <https://www.assembly.ca.gov/legislativedeadlines>.

MOTION BY SUPERVISOR HILDA L. SOLIS AND
SUPERVISOR JANICE HAHN

November 27, 2018

Assessing LA County Property for Future Early Care and Learning Sites

Research demonstrates that 90% of a baby's brain develops by the age of five. Further, children who attend high-quality early care and education programs perform better on standardized tests in reading and math, are less likely to be placed in special education, are less likely to be held back a grade, and are more likely to graduate from high school and attend college.¹ Based on cost-benefit analysis, economists share that investing in high-quality early care and education programs is an effective strategy for closing achievement gaps.²

Statewide, the need for quality early care and education services is well documented. California is the fifth largest economy in the world, yet it is providing affordable baby and toddler early learning experiences to less than 14% of eligible

¹ McCoy, D. C., et al. (2017) Impacts of Early Childhood Education on Medium-and Long-Term Educational Outcomes." Educational Research 46(8) 474-487.

² Garcia, J. L., et al (2017) Quantifying the Life-cycle Benefits of a Prototypical Early Childhood Program. No. w23479. National Bureau of Economic Research.

MOTION

SOLIS	_____
RIDLEY-THOMAS	_____
HAHN	_____
BARGER	_____
KUEHL	_____

families.³ Los Angeles County is home to 370,313 babies and toddlers. Over half (51%) are eligible for California subsidized early learning programs. Yet, only 6% (11,997) of income-eligible babies and toddlers are served by State subsidies.⁴

While the demand for early care and education is tremendous, the industry is unable to meet this need, especially for working-class communities. This crisis is due to large demand for subsidized ECE services, a shortage of childcare facilities, and minimal state and local funding. Children are missing essential learning and developmental opportunities to create a strong foundation necessary for school readiness and ultimately for successful life outcomes. Increasing access to affordable early care and education will provide key support and opportunities for working-class families to keep their jobs, pay their bills, and more broadly, help reduce the homelessness and housing crisis in the county.

In October, the Board of Supervisors directed the Office of Child Protection, in conjunction with the Department of Public Health and the Policy Roundtable for Child Care and Development, to report-back with a comprehensive financial landscape analysis to determine what funding currently supports Early Care and Education services throughout Los Angeles County. Learning more about the County's fiscal landscape for early care and education is essential, but that understanding must be coupled with a deeper understanding of the property available for future sites for child

³ "The State of Early Care and Education in Los Angeles County Executive Summary." Los Angeles County Child Care Planning Committee 2017 Needs Assessment. (2017).

⁴ Pleitéz Howell, K., Watson, E., & Lara, A. (2018) "Babies and Toddlers in Los Angeles County: Prioritizing High-Quality Early Care and Education to Set Children on a Path to Success. Recommendations for Decision Makers. Policy Brief by Advancement Project California.

early care and education.

WE, THEREFORE, MOVE that the Board of Supervisors direct CEO, in consultation with the Policy Roundtable for Child Care and Development and Office for Advancement of Early Care and Education, housed within the Department of Public Health, Internal Services Department and Public Works, to report back in 120 days on the following:

1. Los Angeles County-owned property which could be used to build new early care and education facilities in accordance with state and local regulations; and
2. Los Angeles County-owned buildings, currently not in use, which could be used for child care services. These buildings may be standalone facilities or have vacant rooms or areas that would be suitable for renovation.

#

This page intentionally blank.

Assessing LA County Property for Future Early Care and Learning Sites



Kelly Quinn and Max Thelander
Chief Executive Office, County of Los Angeles
Asset Management Branch, Master Planning Unit

10 April 2019
Policy Roundtable for Child Care and Development

Outline

- Who We Are
- Background on Board Motion
- County-Owned Property
- Criteria for ECE Facilities
- Identifying High-Need Areas in LA County
- Preliminary Recommendations and Next Steps
- Tell Us Your Thoughts!

Who We Are

- LA County CEO's Asset Management Branch has three divisions: Capital Programs, Real Estate, and Master Planning
- Key goals of the Asset Management Branch:
 - Optimize the use of assets to their **highest and best use**
 - Establish stronger **connections between service priorities and asset decisions**
 - Create an **enterprise-wide understanding** of asset needs and priorities
 - Develop **long-term funding strategies** that address future unfunded needs
 - Stimulate **economic activity** and improve residents' **quality of life**

Background on Board Motion

- November 2018: Board of Supervisors directed CEO to report back on:
 1. Los Angeles County-owned **property** which could be used to build new early care and education facilities in accordance with state and local regulations; and
 2. Los Angeles County-owned **buildings**, currently not in use, which could be used for child care services. These buildings may be standalone facilities or have vacant rooms or areas that would be suitable for renovation.

AGN. NO. ____	
MOTION BY SUPERVISOR HILDA L. SOLIS AND SUPERVISOR JANICE HAHN	November 27, 2018
<u>Assessing LA County Property for Future Early Care and Learning Sites</u>	
<p>Research demonstrates that 90% of a baby's brain develops by the age of five. Further, children who attend high-quality early care and education programs perform better on standardized tests in reading and math, are less likely to be placed in special education, are less likely to be held back a grade, and are more likely to graduate from high school and attend college.¹ Based on cost-benefit analysis, economists share that investing in high-quality early care and education programs is an effective strategy for closing achievement gaps.²</p> <p>Statewide, the need for quality early care and education services is well documented. California is the fifth largest economy in the world, yet it is providing affordable baby and toddler early learning experiences to less than 14% of eligible</p>	

County-Owned Property

- 13 existing child care facilities on County property
 - Total licensed capacity ~450
- **Limited number of vacant/underutilized County properties without a confirmed plan for reuse**
 - Many of the remaining vacant/underutilized properties are not well-suited for ECE facilities
- County's inventory of owned and leased buildings does not include room-level use data

Criteria for ECE Facilities

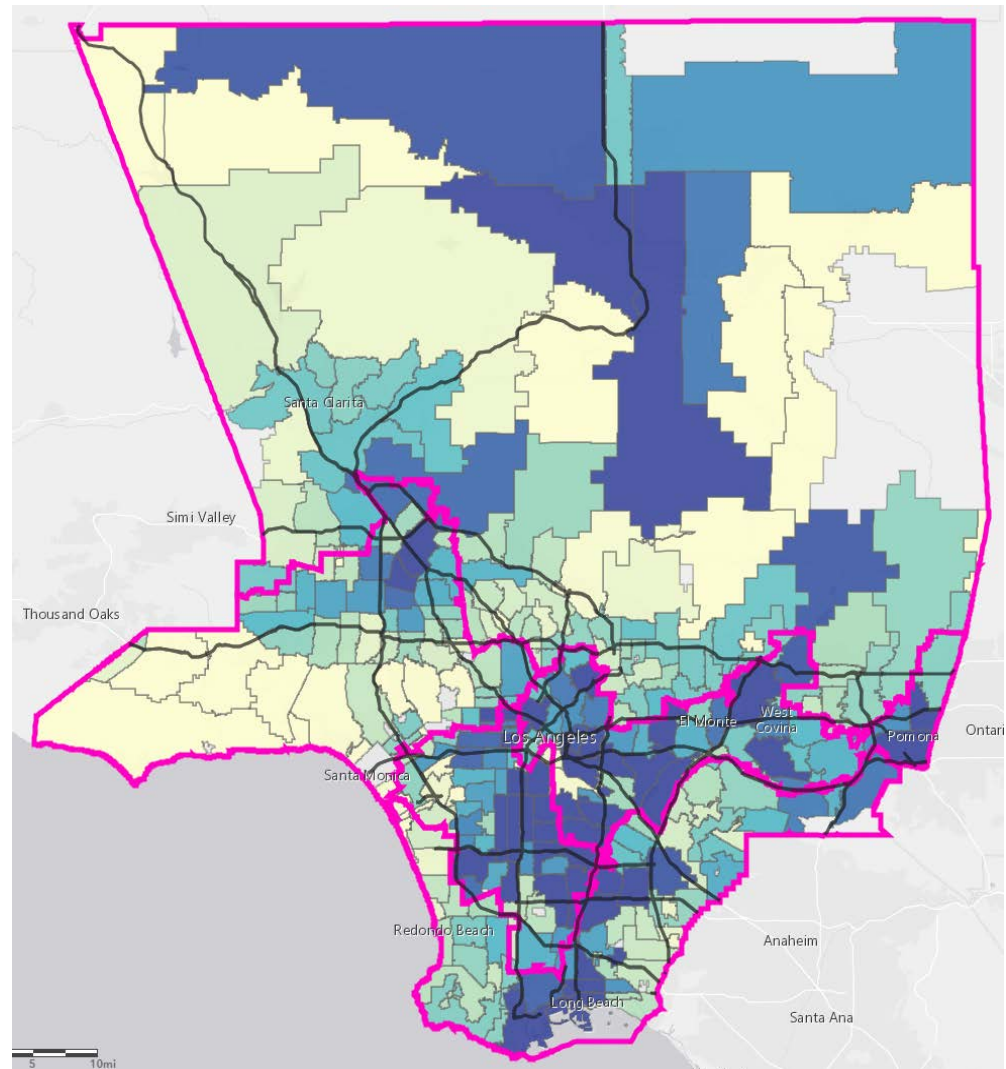
- **Neighborhood scale – surrounding environment**
 - **High-need areas**
 - Proximity to job centers (high employment density)
 - Proximity to elementary schools
 - Proximity to County/social services
 - Proximity to public transit
 - Proximity to public/affordable housing
 - Distance from incompatible land uses (e.g., prisons, industrial areas)
 - Compliant with local regulations (e.g., zoning)
- **Site scale – building amenities**
 - First floor location
 - Outdoor space
 - Compliant with state regulations (e.g., minimum square footage per child, required napping area)
 - Pickup and drop-off area / on-site parking
 - “Look and feel” (smaller, non-institutional facilities preferred)

Identifying High-Need Areas in LA County

- Which geographic areas in LA County have the **greatest unmet needs** for early care and education?
- Number of **infants and toddlers (0-36 months) eligible for subsidized child care and not currently served**, by ZIP code
 - Data source: LPC Local Funding Priorities (FY 2018-19)
- What **other data indicators** should we be considering?
 - Birth rates?
 - Youth in foster care?
 - R&R agency referrals?

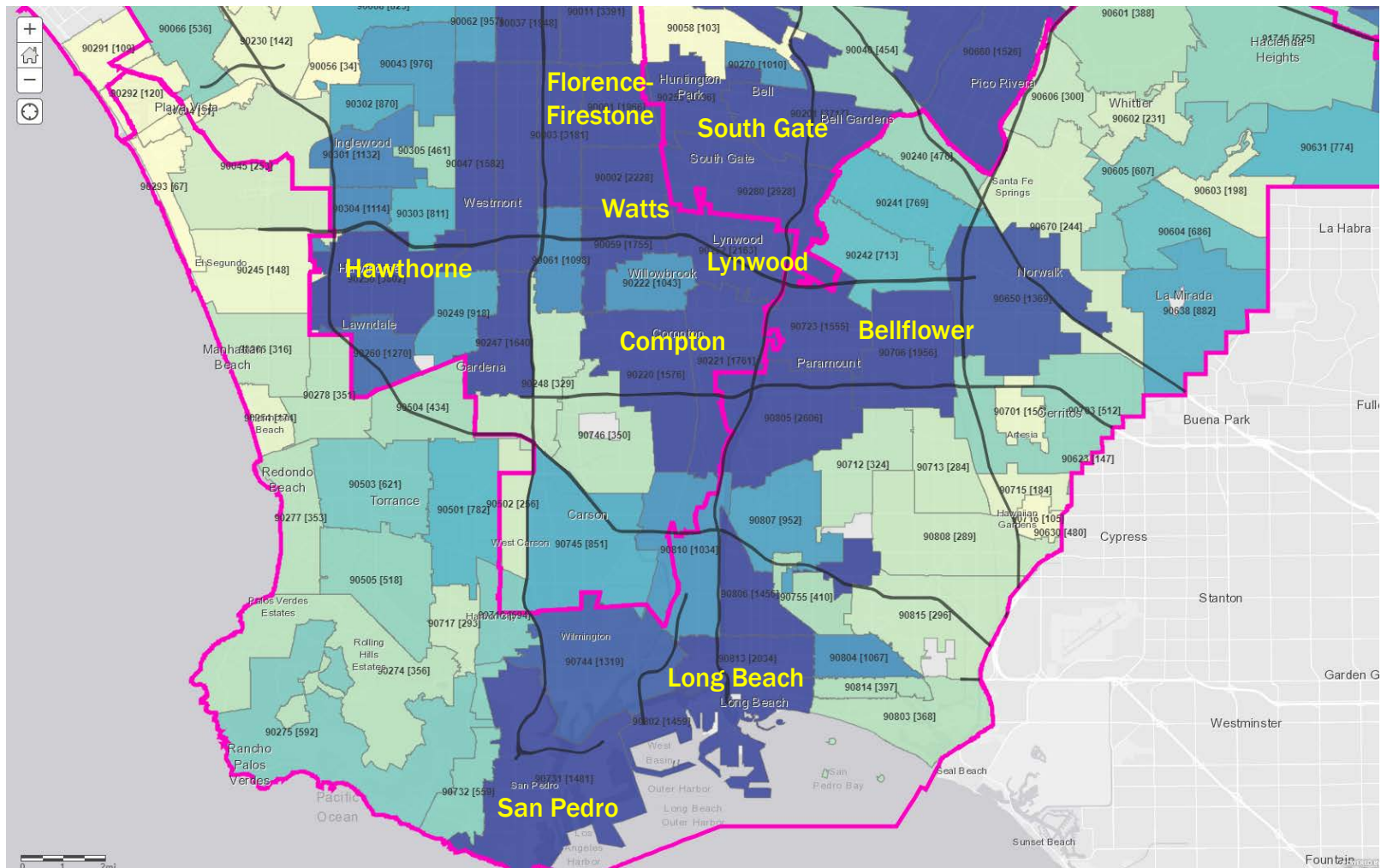
Identifying High-Need Areas in LA County

- Darker blue indicates higher level of need (greater # of eligible, unserved infants and toddlers)
- Note that data is mapped at the **ZIP Code** level
 - Difficult to pinpoint location where one ZIP code covers a large area



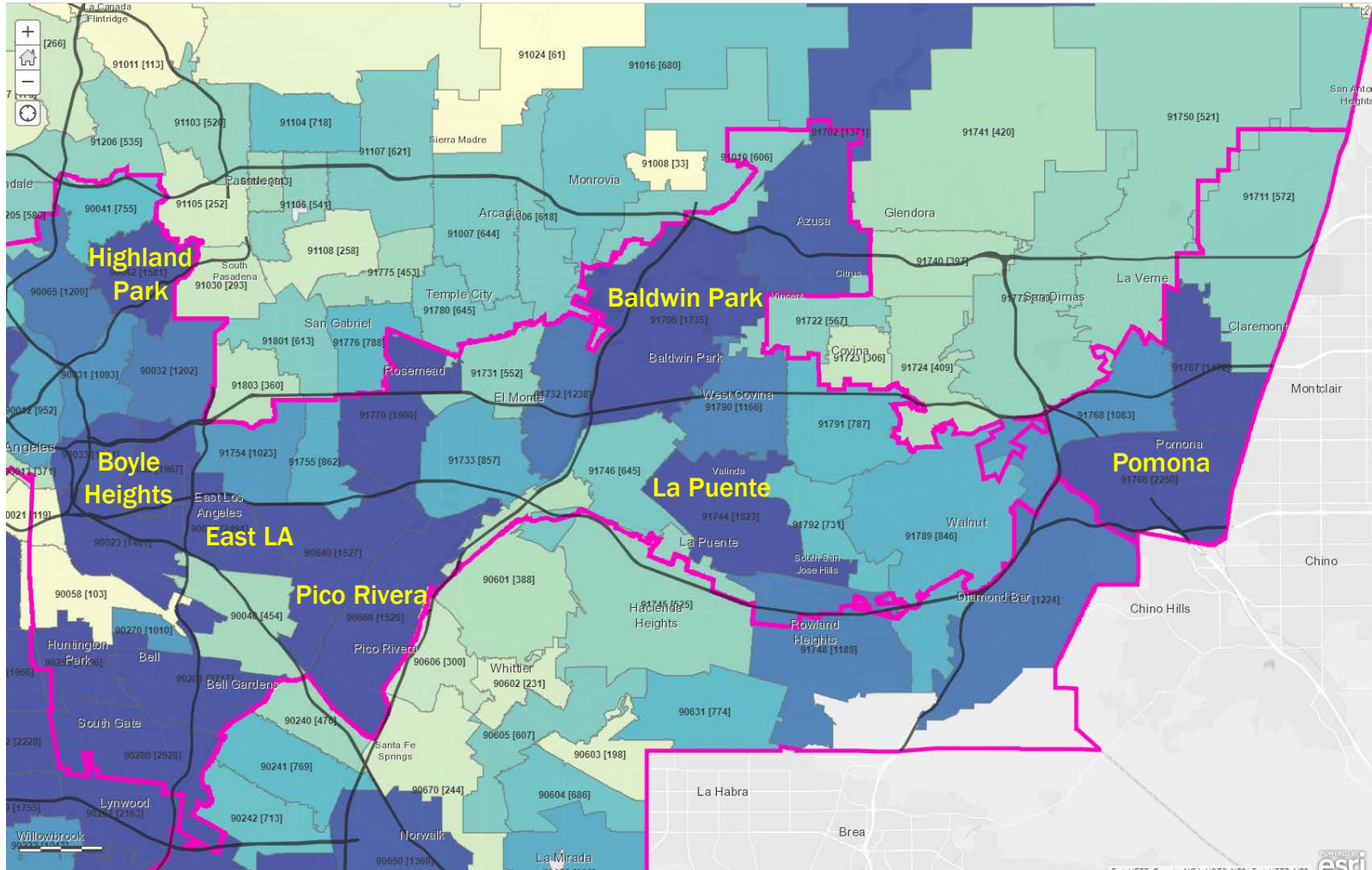
Identifying High-Need Areas in LA County

South LA (SD 2), South Bay/Long Beach/Gateway Cities (SD 4)



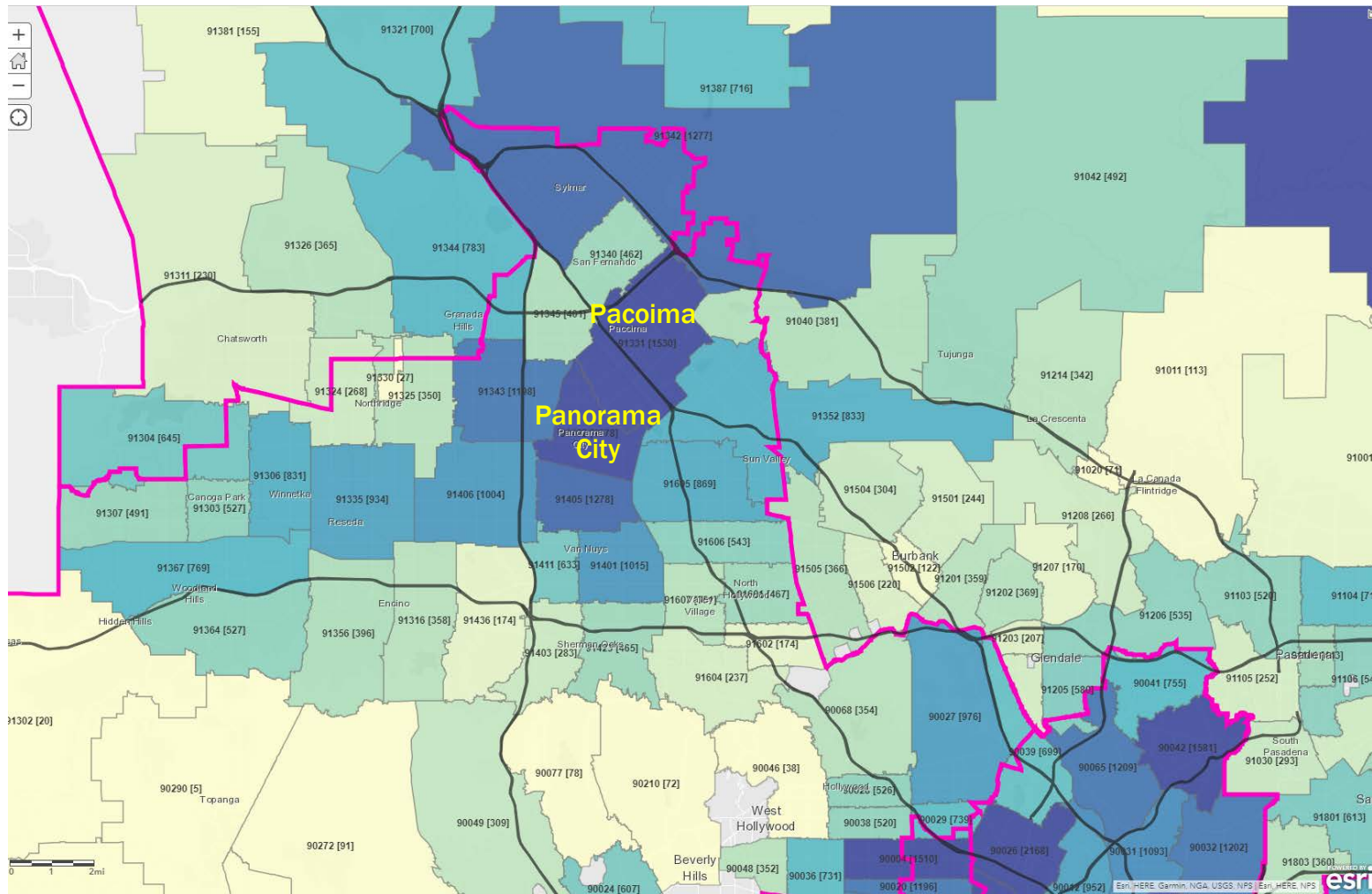
Identifying High-Need Areas in LA County

San Gabriel Valley (SD 1, 4, 5)



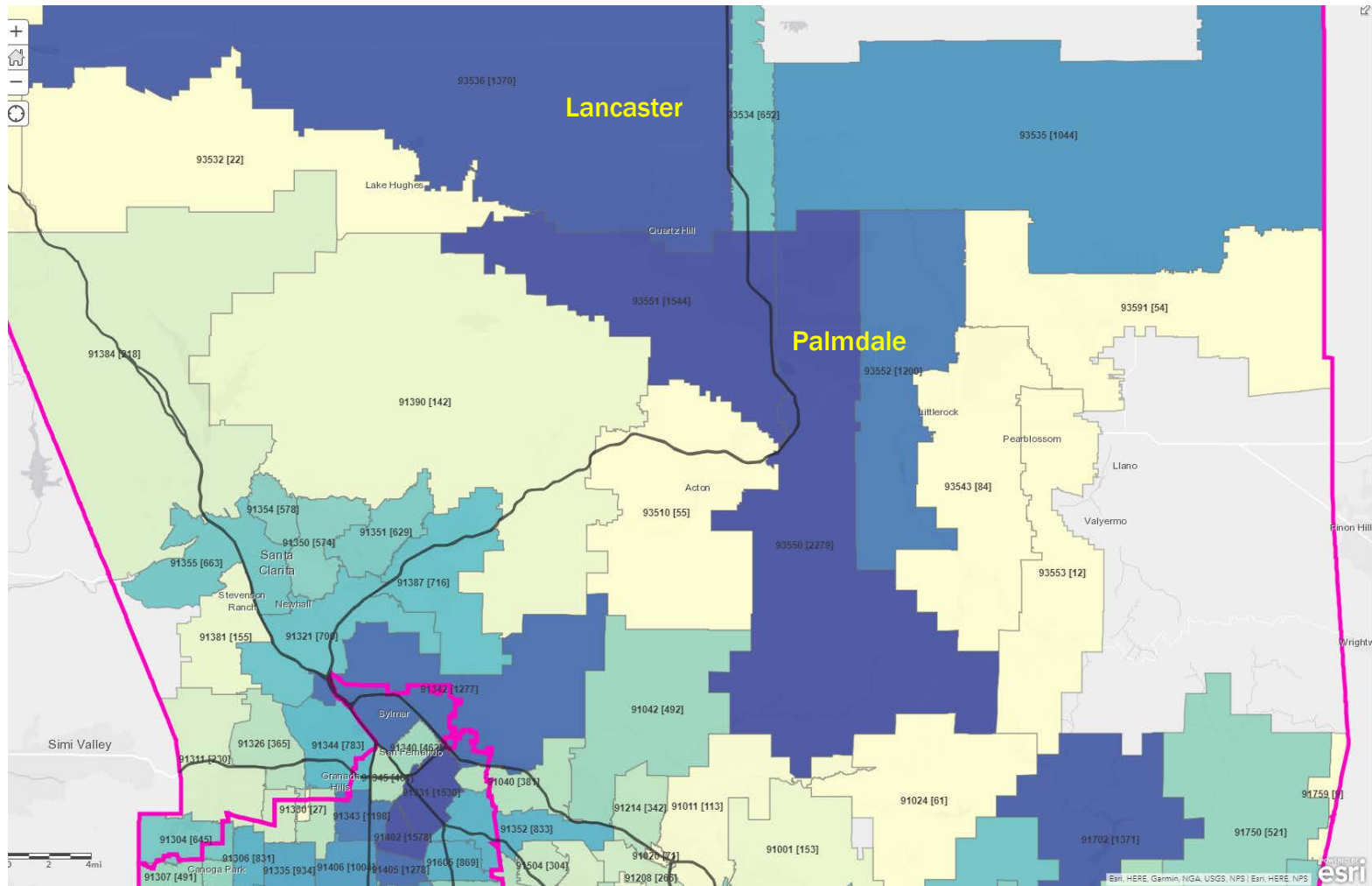
Identifying High-Need Areas in LA County

San Fernando Valley (SD 3, 5)



Identifying High-Need Areas in LA County

Santa Clarita Valley / Antelope Valley (SD 5)



Preliminary Recommendations

- **Focus search for available properties on geographic areas with greatest unmet needs.** This could potentially include:
 - Schools
 - Parks
 - Faith-based organizations
 - Other government-owned properties (e.g., Metro)
- **Provide technical assistance, and streamline the permitting process where feasible.** This could potentially include:
 - Locating suitable real estate
 - Navigating state and local regulations
 - Securing funds needed for facility improvements

Next Steps

- **Mid-May:** Finalize draft report, incorporating feedback from Planning Committee and Policy Roundtable
- **Mid-June:** File final report with Board of Supervisors
 - Timing should align with completion of the **Comprehensive Fiscal Analysis** (by LA County Office of Child Protection and ECE Prevention Work Group), and adoption of final **state budget** (potential funding for new/expanded ECE facilities)

Tell Us Your Thoughts!

- Which geographic areas in LA County have the greatest unmet needs for early care and education? What other data indicators could we use to estimate ECE needs at the community/ZIP code level?
- What are the most significant facility-related hurdles that ECE providers currently face? What are some specific solutions that could help reduce those barriers?
- What roles should city, county, state, and federal governments play, respectively, to support creation of ECE facilities most effectively? Who is best positioned to do what? How might strategic partnerships help?

Tell Us Your Thoughts!

- We want to hear your thoughts, questions, and ideas!
- Contact:
 - **Max Thelander** – Master Planning Unit, LA County CEO
 - **Email:** mthelander@ceo.lacounty.gov
 - **Phone:** 213.893.0443
- Please share your feedback no later than [May 1st](#)



THANK YOU!

This page intentionally blank.

Conceptualizing the Strategic Plan

Los Angeles County Policy Roundtable for Child Care and Development
April 10, 2019



PRELIMINARY ITEMS FOR REVIEW

- Vision
- Mission
- Priority Areas/Outcome Goals
- Measures of Success (Objectives).

ONE VISION

ONE MISSION

DRAFT VISION

All children and their families have access to high-quality early care and education programs.

(other concepts to consider– ECE as part of larger system, children's optimal development, strengthens families)

DRAFT MISSION

To serve as a leader for building and strengthening a high quality early care and education system for all children and families in Los Angeles County.

DRAFT PRIORITY AREAS/OUTCOME GOALS

Goal 1: Lifting the OAECE as a Change Agent for Early Care and Education

Goal 2: Increasing Access

Goal 3: Enhancing Quality

Goal 4: Growing the Workforce

Goal 5: Engaging Families and Communities

LIFTING THE OAECE AS CHANGE AGENT

- Strengthen conceptual understanding of DPH's overarching goals of just culture and equity and relationship with early care and education
- Explore/determine structure/roles for achieving shared goals
- Build the capacity of the office/leverage resources needed to achieve goals and objectives
- Foster partnerships with local stakeholders and County departments
- Strengthening the relationship between the Board of Supervisors and the OAECE/Roundtable/Planning Committee
- Contribute to the Los Angeles County voice on policy issues at the state level
- Create a communications system

INCREASING ACCESS

- Enhance data collection and analysis – identify opportunities to overlay with and leverage other sources
- Harness the power of data to understand strengths and needs to tell the Los Angeles County story
- Promote mixed delivery system – establish a task force
- Conduct study of family child care providers who have left the system
- Use data to advocate at the state level

ENHANCING QUALITY

- Serve as advisory to Quality Start Los Angeles (QSLA)
- Promote development of Quality Improvement System that broadens the quality improvement continuum
- Advocate for increased investments in Quality Rating and Improvement System
- Boost integration of services and linkages with County initiatives
- Promote mixed delivery system – establish a task force
- Conduct study of family child care providers who have left the system
- Use data to advocate at the state level

GROWING THE WORKFORCE

- Advocate for reimbursement rate reform
- Provide forum for conversations on child development permit revisions and the ECE credential
- Improve information systems to support professional development
- Explore the integration of the Child Care Retention/Salary (AB 212) Program with the ECE Workforce Registry and alignment with QSLA
- Advocate for compensation comparable to education. Experience and responsibilities

ENGAGING FAMILIES AND COMMUNITIES

- Define the purpose of the parent/community voice
- Develop strategies to engage parents and communities
- Leverage existing entities working directly with families
- Explore creating an arm of the Planning Committee
- Host forums with parents and community members

COMMENTS...

- What do you like?
- What is missing?
- Additional thoughts?

Office for the Advancement of Early Care and Education, Child Care Planning Committee and Policy Roundtable for Child Care and Development
Proposed Strategic Plan Vision, Mission, Goals and Objectives

Breakout Questions – April 3, 2019

Draft Proposed Language	Questions/Comments
Draft Vision All children and their families have access to high-quality early care and education programs. (other concepts to consider– ECE as contributor to larger system, children’s optimal development, strengthens families)	
Draft Mission To serve as a leader for building and strengthening a high-quality early care and education system for all children and families in Los Angeles County.	
Draft Goal 1: Lifting the OAECE as a Change Agent for Early Care and Education	
<i>Draft Objectives ~</i> <ul style="list-style-type: none"> ▪ Strengthen conceptual understanding of DPH’s overarching goals of just culture and equity and relationship with early care and education ▪ Explore/determine structure/roles for achieving shared goals ▪ Build the capacity of the office/leverage resources needed to achieve goals and objectives ▪ Foster partnerships with local stakeholders and County departments ▪ Strengthening the relationship between the Board of Supervisors and the OAECE/Roundtable/Planning Committee ▪ Contribute to the Los Angeles County voice on policy issues at the state level ▪ Create a communications system 	
Draft Goal 2: Increasing Access	
<i>Draft Objectives ~</i> <ul style="list-style-type: none"> ▪ Enhance data collection and analysis – identify opportunities to overlay with other sources ▪ Harness power of data to understand strengths and needs to tell the Los Angeles County story 	

Draft Proposed Language	Questions/Comments
<ul style="list-style-type: none"> Promote mixed delivery system – establish a task force Conduct study of family child care providers who have left the system Use data to advocate at the state level 	
Draft Goal 3: Enhancing Quality	
<p><i>Draft Objectives ~</i></p> <ul style="list-style-type: none"> Serve as advisory to Quality Start Los Angeles (QSLA) Promote development of Quality Improvement System that broadens the quality improvement continuum Advocate for increased investments in Quality Rating and Improvement System Boost integration of services and linkages with County initiatives Promote mixed delivery system – establish a task force Conduct study of family child care providers who have left the system Use data to advocate at the state level 	
Draft Goal 4: Growing the Workforce	
<p><i>Draft Objectives ~</i></p> <ul style="list-style-type: none"> Advocate for reimbursement rate reform Provide forum for conversations on child development permit revisions and the ECE credential Improve information systems to support professional development Explore the integration of the Child Care Retention/Salary (AB 212) Program with the ECE Workforce Registry and alignment with QSLA Advocate for compensation comparable to education. Experience and responsibilities 	

Draft Proposed Language	Questions/Comments
Draft Goal 5: Engaging Families and Communities	
<i>Draft Objectives ~</i> <ul style="list-style-type: none"> ▪ Define the purpose of the parent/community voice ▪ Develop strategies to engage parents and communities ▪ Leverage existing entities working directly with families ▪ Explore creating an arm of the Planning Committee ▪ Host forums with parents and community members 	

What do you like?

What is missing?

Additional thoughts?