

POLICY ROUNDTABLE FOR CHILD CARE AND DEVELOPMENT

JUNE 8, 2022 ♦ 10:00 a.m. to 12:00 a.m.

Microsoft Teams ▪ To join by telephone: 323.776.6996; Conference ID: 880 538 588#

AGENDA

Welcome and Introductions

- | | | | |
|-------|----------------------------|-------------|--------------------------------|
| 10:00 | 1. Roll Call of Membership | Action Item | Debra Colman,
OAECE |
| 10:15 | 2. Comments from the Chair | Information | Karla Pleitéz Howell,
Chair |

Public Policy Update

- | | | | |
|-------|---|-------------|--|
| 10:25 | 3. Governor Newsom's May 2022 Budget Revise Overview | Information | Karla Pleitéz Howell,
Chair
Commissioner Justin
Blakely |
| 10:50 | 4. Public Policy Platform – Legislative Session 2023-24 | Information | Commissioner Justin
Blakely |

11:00 BREAK

General Business

- | | | | |
|-------|---|-------------|--|
| 11:05 | 5. Approval of Minutes – April 13, 2022 | Action Item | Alejandra Albarran
Moses, Vice Chair
Leanne Drogin,
OAECE |
|-------|---|-------------|--|

Our Unified Strategic Plan in Motion

- | | | | |
|-------|---|-------------|---|
| 11:15 | 6. Policy Roundtable Commission 2021-2022 Reflections | Discussion | Alejandra Albarran
Moses, Vice Chair |
| 11:35 | 7. Policy Roundtable Commission September 2022 | Information | Leanne Drogin,
OAECE |

COVID-19 and Early Care and Education (ECE)

- | | | | |
|-------|---|-------------|------------------------|
| 11:42 | 8. Update on COVID-19 and ECE in Los Angeles County | Information | Debra Colman,
OAECE |
|-------|---|-------------|------------------------|

Wrap Up

- | | | | |
|-------|---|-------------|---|
| 11:50 | 9. Announcements and Public Comment | Information | Karla Pleitéz Howell,
Chair |
| 11:59 | 10. Meeting in Review and Call to Adjourn | Information | Alejandra Albarran
Moses, Vice Chair |

Next Virtual Meeting:

Wednesday, September 14, 2022 ▪ 10:00 a.m. to 12:00 p.m.

Vision

Children are healthy, thriving and have equitable opportunities to achieve optimal development and succeed in life.

Mission

Lead, build, and strengthen an affordable and high-quality ECE system for the children and families in Los Angeles County.

This page intentionally blank.

Minutes for Policy Roundtable for Child Care and Development Commission May 11, 2022

Welcome and Introductions

1. Roll Call of Membership

Debra Colman, Director of the Office for the Advancement of Early Care and Education (OAECE), opened the Policy Roundtable for Child Care and Development (Policy Roundtable) Commission meeting at 10:03 a.m. by reading the grounding statement to conducting a virtual meeting. Colman then called roll of the Policy Roundtable Commission.

2. Comments from the Chair

Chair Karla Pleitéz Howell welcomed Commissioners, alternates, and guests to the meeting and invited all participants to turn on their video to enhance communication. Chair Pleitéz Howell acknowledged the celebration of Mother's Day and Asian American Heritage month. She also recognized that Child360 recently closed and the critical voice Child360 has had in early care and education (ECE). Chair Pleitéz Howell also acknowledged Commissioners Dawn Kurtz and Elsa Jacobsen who represented Child360 and noted that the Policy Roundtable Commission will need to update its bylaws to reflect the closing of Child360. Chair Pleitéz Howell invited comments from the group. Commissioner Jacquelyn McCroskey suggested the Policy Roundtable Commission look at areas of work Child360 was doing that the Policy Roundtable Commission can help support.

Public Policy Update

3. Public Policy Platform – Legislative Session 2023-24

Chair Pleitéz Howell shared that the Joint Committee on Legislation made changes to the some of the examples in the Public Policy Platform (Platform). Commissioner and Co-Chair of the Joint Committee on Legislation Ofelia Medina presented the Platform changes suggested by the Committee. See Public Policy Platform yellow highlights for changes. Commissioner Medina shared that the Child Care Planning Committee (Planning Committee) and the Policy Roundtable Commission need to vote to approve the changes.

Commissioner Medina opened the floor for questions and discussion. The discussion focused on the need to include in the Platform LA County's support for a mixed delivery system. Commissioner Ariana Oliva noted that the Planning Committee approved the changes Commissioner Medina just presented at its last meeting. Given the discussion for the need to include LA County's support for a mixed delivery system Chair Pleitéz Howell called for a motion to approve and amend the Platform by adding language that addresses LA County's support for a mixed delivery system. *Commissioner McCroskey made the motion to approve the Platform with the additional language to the Public Policy Platform; Commissioner Fran Chasen seconded the motion.* Chair Pleitéz Howell opened the floor for discussion. The discussion included identifying possible sections in the Platform to include the additional language and the suggestion that "mixed delivery system" is defined. Commissioners raised different points that should be included in the definition such as diversity of settings and hours; whether it should include a list of specific programs such as Head Start or if the definition should be broader so that programs are not left out of a list; and the importance of parent choice. Chair Pleitéz Howell restated the motion to approve the Platform with the amendment to add language that includes mixed delivery system. She also outlined a process to draft the added language which included Chair Pleitéz Howell, Vice Chair Alejandra Albarran Moses, and OAECE staff take the feedback from this discussion and draft the additional language and share it with the Joint Committee on Legislation. The Joint Committee on Legislation will update the language and then share it with the Planning Committee. *Chair Pleitéz Howell called for the vote and the motion passed unanimously. Commissioners Nora Garcia-Rosales and Colleen Pagter were absent from the vote.*

BREAK

Chair Pleitéz Howell transitioned the meeting into a five-minute break.

General Business

4. Approval of Minutes – April 13, 2022

Vice Chair Albarran Moses presented the minutes from April 13, 2022 and asked for a motion to approve. Commissioner Justin Blakely made the motion to approve the minutes; Commissioner Ellen Cervantes seconded the motion. The motion on the minutes passed with two abstentions: Commissioners Fran Chasen and Jessica Perea.

Our Unified Strategic Plan in Motion

5. Joint ECE Delegations Board Engagement Update

Vice-Chair Albarran Moses reminded the group that the Planning Committee Board of Supervisors' (BOS) appointees and the Policy Roundtable BOS Engagement teams came together to create Joint ECE Delegations (Delegations) with the purpose of meeting with BOS and provide information about the Pursuit of Position approved by the Policy Roundtable in March 2022. Four of the Delegations met with their respective BOS offices before the April 2022 Policy Roundtable meeting and shared highlights from their meetings at the April 2022 Policy Roundtable meeting.

Vice-Chair Albarran Moses is the lead for the Delegation for Supervisor Hahn and the Delegation met with Supervisor Hahn's office after the April 2022 Policy Roundtable meeting. Vice-Chair Albarran Moses, Commissioner Debi Anderson, and Commissioner Ricardo Mota presented a summary of what was discussed with Supervisor Hahn's Children and Human Services Deputy Maral Karaccusian. The discussion included the criticalness of ECE teacher shortage, and that compensation is contributing to this shortage; information about the Pursuit of Position passed by the Policy Roundtable; and the need for LA County to support the mixed delivery system. Deputy Karaccusian had questions about programs providing a whole child approach; if there are opportunities to provide two-generation service approaches; and how are community scars from the last two years being experienced and addressed in early childhood programs. Deputy Karaccusian shared that she appreciates these conversations with the Delegation and requested that the Delegation continues to regularly meet with the Supervisor's Office.

6. OAECE Operation Structure: Building An ECE Support System Team

OAECE Director Colman provided an overview of the OAECE and shared that with some of the recent OAECE staff changes and shifts in ECE this is an opportune time for the OAECE to assess: 1) how it can best support these shifts, and 2) what is the optimal role of OAECE in the ECE system. Colman presented a power point that included the OAECE's roles and responsibilities; programs, projects, and activities; organization chart that includes additional positions and promotion of positions that need to be filled to continue to build the OAECE team.

COVID-19 and Early Care and Education

7. Update on COVID-19 and ECE in LA County

Colman highlighted that there has been a steady increase in COVID-19 cases in LA County and specific communities such as impacted and under-resourced communities have been disproportionately affected. Colman encouraged everyone to continue to wear masks. She then shared that Moderna has filed for approval for an early childhood vaccine and the OAECE is working with partners to identify ways for parents with young children to access vaccines once they become available. Colman also shared that the Department of Public Health, in partnership with OAECE, launched free public health technical assistance to ECE centers. Any center or family child care program can request technical assistance and coaching to ensure safety for children.

Wrap Up

8. Announcements and Public Comment

Vice-Chair Albarran Moses opened the floor for announcements and public comment. Commissioner Cervantes announced she will retire from the Child Care Resource Center in June 2022; however, she will continue to serve on the Policy Roundtable as one of Supervisor Barger's appointees. Commissioners shared their appreciation for Commissioner Cervantes' extensive contribution to ECE. Commissioner Jackie Majors shared that Crystal Stairs was awarded a grant by the Balmer Foundation to create and provide support to an African American ECE provider network.

9. Meeting in Review and Call to Adjourn

Vice-Chair Albarran Moses highlighted Michele Sartell and adjourned the meeting at 11:57 a.m.

Attendance

Commissioners Attendance

1. Karla Pleitéz Howell, *First Supervisorial District*
2. Jessica Perea, *First Supervisorial District*
3. Justin Blakely, *Second Supervisorial District*
4. Terry Ogawa, *Third Supervisorial District*
5. Alejandra Albarran Moses, *Fourth Supervisorial District*
6. Ricardo Mota, *Fourth Supervisorial District*
7. Ellen Cervantes, *Fifth Supervisorial District*
8. Jennifer Hottenroth, *Department of Children and Family Services*
9. Jeannette Aguirre Carrillo, *Department of Probation*
10. Nurhan Pirim, *Department of Public Social Services*
11. Ariana Oliva, *Child Care Planning Committee*
12. Jackie Majors, *Child Care Alliance of Los Angeles*
13. Ofelia Medina, *First 5 LA*
14. Fran Chasen, *Southern California Chapter – California Association for the Education of Young Children*

Alternate Commissioners Attendance

1. Nora Garcia-Rosales, *Department of Public Social Services*
2. Debi Anderson, *Los Angeles County Office of Education*
3. Jacquelyn McCroskey, *Commission for Children and Families*
4. Colleen Pagter, *Los Angeles Unified School District*
5. Marcy Manker, *First 5 LA*

Guests Attendance

1. Cristina Alvarado, *Child Care Alliance of Los Angeles*
2. Gus Bribiesca, *Department of Public Social Services*
3. Esther Nguyen, *First 5 LA*
4. Luis Molina, *Early Edge California*
5. JoAnn Shalhoub-Mejia, *California Federation of Family Child Care Association*

Staff Attendance

1. Debra Colman, *Director*
2. Leanne Drogin, *Senior Program Analyst*
3. Erica Weiss, *Intermediate Clerk*

Policy Roundtable for Child Care & Development Commission

May 11, 2022

WELCOME!



Policy Roundtable for Child Care & Development Commission

Meeting will begin at 10:00 a.m.

Feel free to share
your name & organization
in the chat

Meeting materials can be accessed at:
OAECE website
<https://childcare.lacounty.gov/prccd/>



Public Policy Update



Questions?



BREAK
5 Minutes



General Business Approval of Minutes



Our Unified Strategic Plan in Motion

BOARD OF SUPERVISORS JOINT ECE DELEGATIONS

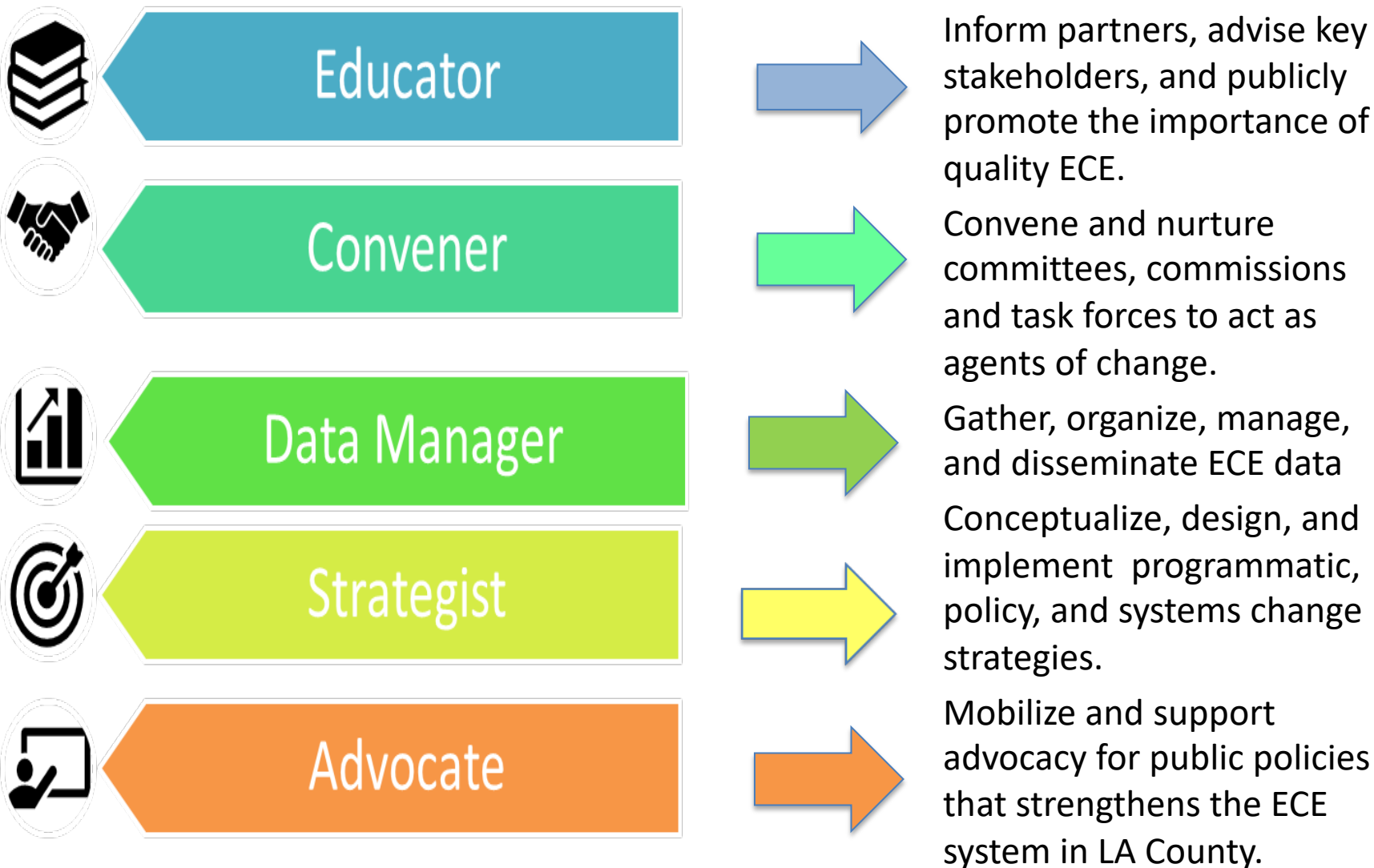


District	1	2	3	4	5
Board of Supervisor (BOS)	Supervisor Hilda Solis	Supervisor Holly Mitchell	Supervisor Sheila Kuehl	Supervisor Janice Hahn	Supervisor Kathryn Barger
Staff Contact	Elise Weinberg <i>Asst. Chief of Staff</i>	Kelvin Driscoll <i>Human Services & Child Welfare, Sr. Deputy</i>	Lisa Pinto <i>Child Welfare Deputy</i>	Maral Karaccusian <i>Children & Human Services Deputy</i>	Monica Banken <i>Family & Children's Deputy</i>
Roundtable BOS Appointee	Karla Pleitéz Howell (Lead)	Justin Blakely (Lead)	Terry Ogawa (Lead)	Alejandra Albarran Moses (Lead)	Ellen Cervantes (Lead)
	Jessica Perea	Sharoni Little	Vacancy	Vacancy	Joannie Aguayo
Roundtable Organization Representative	Dawn Kurtz or Elsa Jacobsen Child360	Jackie Majors or Paul Pulver Child Care Alliance of LA	Fran Chasen or Liliana Alvarez Hernandez So. CA Chapter, CAEYC	Keesha Wood or Debi Anderson LACOE	Dean Tagawa or Colleen Pagtar LAUSD
	Steve Zimmer or Jacquelyn McCroskey Commission for Children & Families	Ariana Oliva Child Care Planning Council	Ofelia Medina or Marcy Manker First 5 LA		
Child Care Planning Committee BOS Appointee	Kelly O'Connell Alternate: Kimberly Dobson-Garcia	Jessica Guerra Alternate: Patrick McFarlane	Julie Taren Alternate: Fran Chasen	Sarah Soriano Alternate: Andrea Sulsona	Dianne Philibosian Alternate: Carla Hegwood

- Embracing the moment
- With change comes opportunity
- Pause and reflect
 - What is OAECE's role in the system?
 - How do we cultivate a team to advance the work?

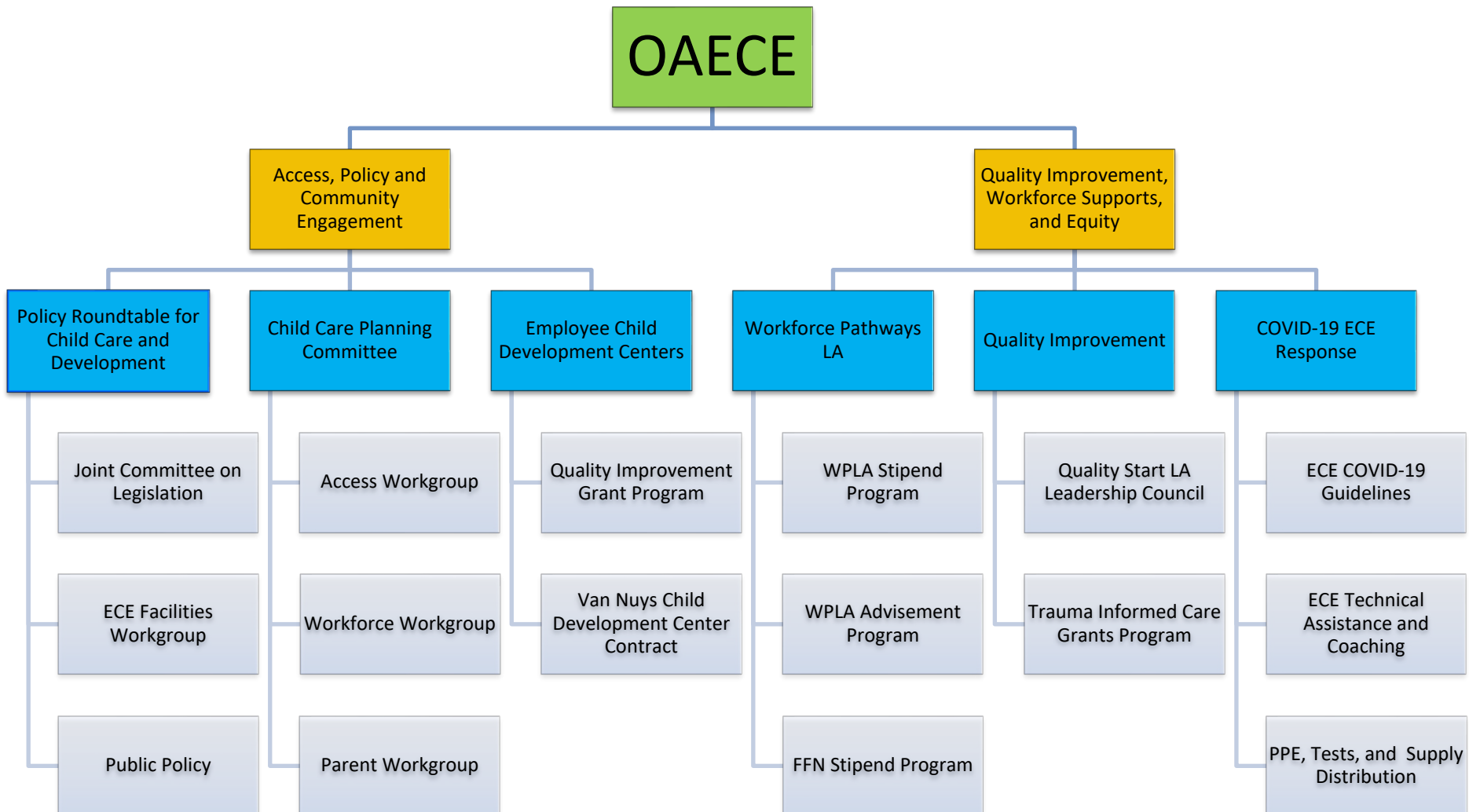


OAECE's Roles & Responsibilities

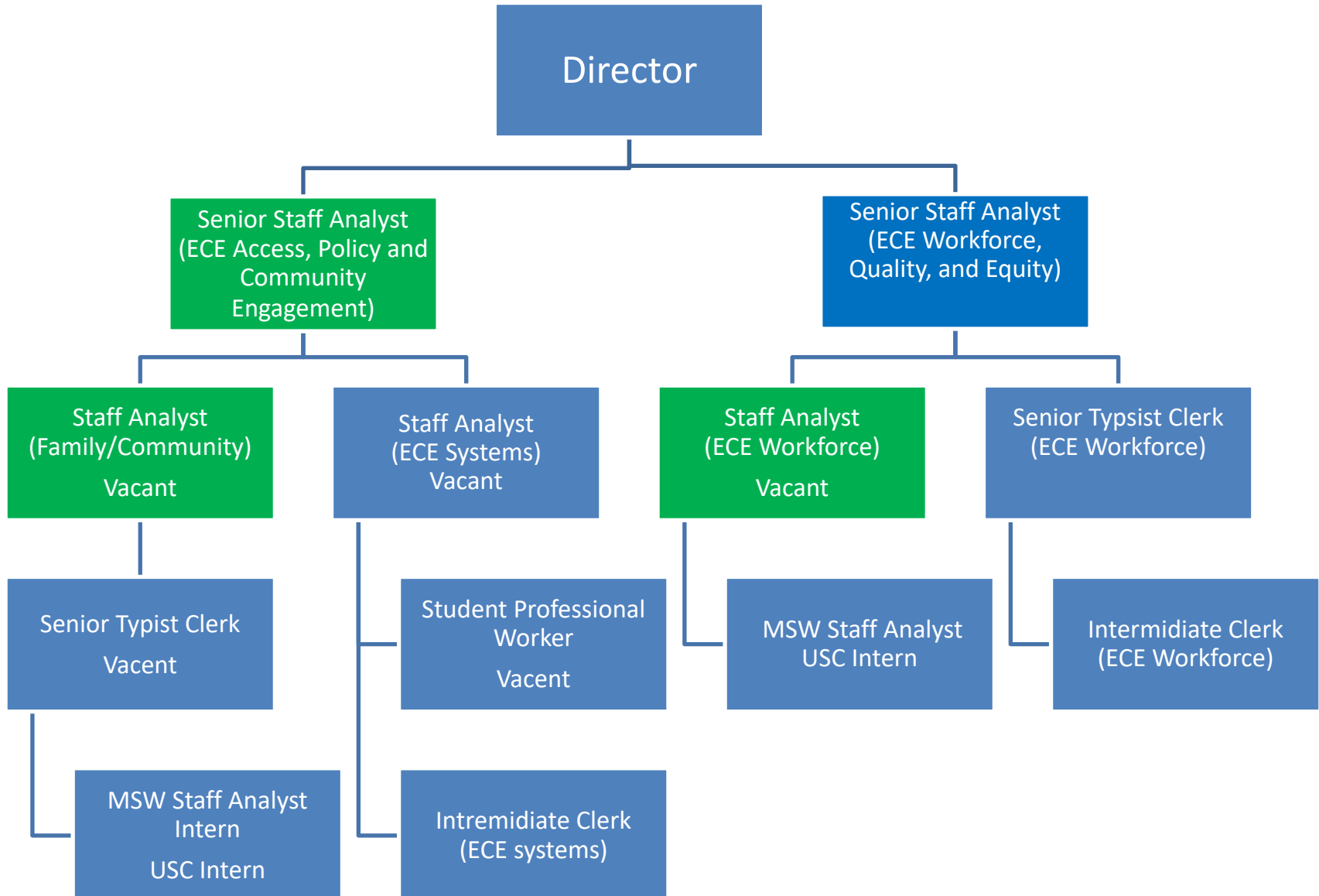




OAECE Projects & Activities



Proposed Org Chart for OAECE



Goal

Build a cross-functional team to support ECE access, quality, workforce and family/community engagement

Desired Qualifications

- At least 5 years working in the ECE system, especially efforts related to increasing access, improving quality, supporting early educators, or engaging parents and communities.
- Knowledge of the legislative process, legislative analysis, and advocacy.
- Excellent verbal and written communication skills.
- Experience working on systems improvement strategies.
- A minimum of a bachelor's degree in early childhood education, social work, sociology, psychology, public policy, public health, or a related field.

Next Steps



- Job announcement for staff analyst
- Position closed on 05/02
- Awaiting approval from CEO on new positions





Policy Roundtable for Child Care & Development Commission



PUBLIC POLICY PLATFORM 2023-2024 Legislative Session

Introduction

The Child Care Planning Committee (Planning Committee) and Policy Roundtable for Child Care and Development (Roundtable) promote policies designed to increase the availability of and access to affordable, high quality early care and education programs for all children and their families of Los Angeles County. This public policy platform presents current and emerging policy issues in early care and education that are consistent with the County of Los Angeles State Legislative Agenda for the 2023-2024 Legislative Session. The platform delineates each of the County's legislative agenda items in **bold** followed by examples of efforts that may be addressed by proposed legislation and/or the proposed state budget.

Platform Issues

1. Support efforts to enhance the quality of early care and education that set high standards for all services and program types and address the needs of all children, including those with disabilities and other special needs, and their families.

Such efforts should include, but not be limited to:

- Addressing the early care and education needs of children from birth through age 12, including infants and toddlers, preschool and school age children, and children with disabilities and other special needs up to age 22, and their families.
- Enhancing the quality of centers, family child care homes, and license-exempt care providers.
- Promoting a strengthening families approach to meet the needs of children at risk for abuse, neglect or sexual exploitation or under the supervision of the child welfare system and children of families under the supervision of Probation.
- Integrating early identification and intervention systems that recognize and respond early to young children who may be at risk for disabilities and other special needs.
- Developing policies that encourage collaboration between early care and education programs and locally funded projects and public agencies that foster child and family well-being through the provision of coordinated services.
- Incorporating optimal health promotion policies and procedures as an integral component that contributes to the overall quality of early care and education services and programs.
- Engaging parents as their child's first teachers and partners in promoting their child's optimal growth and development.

2. Support efforts to develop and implement a statewide quality rating and improvement system and a system to adjust reimbursement rates based on demonstrated quality.

Such efforts should include, but not be limited to:

- Providing parents with clear, concise information on the quality of early care and education settings.
- Fostering the engagement of parents that promotes their child's optimal healthy growth and development and learning through a variety of modalities including virtual supports as well as in person meetings and may also be comprised of counseling and referrals.
- Incorporating early learning standards that are research-based, culturally responsive to children from diverse cultural and linguistic backgrounds, aligned with existing regulatory systems and local quality initiatives, recognize and respond to the individual needs of children in group settings, and attend to families' needs for comprehensive services.
- Building an infrastructure of technical assistance, financial supports and training, all of which are tied to defined quality standards, to help early care and education programs achieve and maintain high quality services.

3. Support efforts to develop and sustain a well-educated and highly skilled professional workforce prepared to serve the culturally and linguistically diverse child and family populations of Los Angeles County.

Such efforts should include, but not be limited to:

- Compensating staff working in centers and family child care homes commensurate with education and experience to include benefit packages (e.g. health insurance, retirement) to attract and retain qualified staff.
- Focusing on teachers and other members of the workforce gaining skills and demonstrating competencies in the following areas: engaging children in social-emotional learning, business practices, forming relationships and interacting with children, how to provide instructional support to children, best practices in working with dual language learners, proficiency in recognition and response to children with disabilities and other special needs, health and nutrition best practices, trauma-informed practices, engaging parents and guardians, and expertise on the spectrum of child development from birth through early adolescence. Workforce practice must be based on established early care and education research.
- Offering coursework and instruction responsive to a multi-lingual, multicultural workforce, including but not limited to providing content in students' home language and offering classes during non-traditional hours.
- Integrating early childhood mental health consultation into early care and education programs to support the workforce in meeting the social, emotional, and mental health needs of children.

- Expanding early childhood educators' access to higher education through stipend programs, grant funds and loan forgiveness programs, higher compensation when they attain post-secondary degrees, and benefits (i.e. health insurance and retirement plans).
 - Facilitating child development or early childhood education coursework coordination and articulation between the community colleges and California State University (CSU) and University of California (UC) systems.
 - Supporting efforts to enhance the quality of the license-exempt care workforce and facilitating connections between license-exempt care and the larger system of early care and education.
 - Supporting alignment of teacher requirements under Title 22 with teacher requirements under Title 5 and with the California Commission on Teacher Credentialing.
 - Facilitating support of license-exempt (family, friend, and neighbor) providers serving children subsidized with federal Child Care and Development Block Grant funds.
 - Training and supporting teachers and other professionals through distance learning strategies.
- 4. Support efforts to ensure the health and safety of all children cared for in licensed early care and education facilities as afforded by timely, regular, and frequent on-site monitoring by the California Department of Social Services, Community Care Licensing Division (CCLD).**

Such efforts should include, but not be limited to:

- Increasing to, at a minimum, annual inspections of centers and family child care homes.
 - Advocating for, at a minimum, annual unannounced inspections of all licensed facilities.
 - Providing that CCLD is sufficiently funded, staffed and held accountable to meet the standards, conduct timely reviews of licensing applications and responses to complaints, and provide technical assistance and resources to current and future licensees.
 - Ensuring that costs of obtaining and renewing the license (or licenses for programs with multiple sites) is reasonable and not an extraordinary burden to the licensee's cost of doing business.
- 5. Support efforts to adequately fund high quality early care and education services for all children from low- and moderate-income families.**

Such efforts should include, but not be limited to:

- Streamlining and transitioning the former dual reimbursement rate systems (Standard Reimbursement Rate and Regional Market Rate) into a single, regionalized reimbursement rate system that covers the true cost of quality and supports the cost of

program operations, including facility development and staff compensation commensurate with education and experience.

- Expanding access to high quality subsidized services for all eligible children, including infants and toddlers and children with disabilities and other special needs as well as preschool and school age children.
- Increasing levels of reimbursement in the Standard Reimbursement Rate (SRR) and the Regional Market Rate (RMR) to compensate providers for the true cost of high-quality services.
- Streamlining and reforming the dual reimbursement systems into a single, regionalized reimbursement system that incentivizes quality and supports the cost of program operations.
- Prioritizing funds targeted to infants and toddlers to meet the growing demand for high quality services.
- Increasing funds for expansion of high quality full-day, full-year services for all ages.
- Offering tax incentives to businesses to provide or subsidize employee's early care and education services.
- Ensuring that the income ceiling for eligibility for State subsidized care reflects the current State Median Income (SMI), adjusted by region if appropriate.
- Opposing proposals that would reduce subsidized rates based on geographic location.

6. Support the streamlining of California Department of Education and Social Services administrative processes to expand access for low-income families, ensure continuity of care, and promote flexible use of early care and education funding to meet the needs of families.

Such efforts should include, but not be limited to:

- Allowing administrative efficiencies such as multi-year contracting, grant-based funding, and waivers on program rules and regulations to allow flexibility of services based on community and family needs.
- Maintaining a 12-month annual eligibility redetermination to allow for more stable enrollments for early care and education programs and continuous services for children and their families while exploring implementation of 24-month annual eligibility.
- Ensuring agencies have the capacity to connect with and serve the most vulnerable and the most difficult-to-serve families.
- Maintaining affordable family fees that do not exceed eight percent of gross family income.

- Maintaining part-day State Preschool as a free, comprehensive early care and education program.
 - Allowing for various systems that serve vulnerable and low-income children and families to streamline administrative functions and share information in order to facilitate the enrollment of children in subsidized early care and education programs and to participate in joint data collection efforts.
 - Expanding the role of the local child care and development planning councils to augment and strengthen the preparation of the needs assessment to capture and report on data relating, but not limited, to workforce, quality and facilities as well as access.
- 7. Support proposals designed to prevent, detect, investigate and, when appropriate, prosecute fraud in subsidized child care and development programs.**
- 8. Support efforts to ensure that vulnerable children and their families have access to consistent, uninterrupted subsidized early care and education services.**

Such efforts should include, but not be limited to:

- Making sure that California Work Opportunity and Responsibility to Kids (CalWORKs) families have access to child care and education services, ensure that participating families are afforded the time and information needed to evaluate their child care and education options and make sound choices, and that allow parents to pursue or maintain employment.
- Maintaining 12-months annual eligibility for CalWORKs Stage 1 Child Care for welfare-to-work participants or until the participant is transferred to CalWORKs Stage 2 Child Care.
- Promoting, facilitating and supporting consistent and continuous participation of children under the supervision of the child welfare system and Probation and their families in high quality programs that promote healthy child development and support effective parenting.
- Ensuring that all subsidized children – infants and toddlers, preschool age, and school age children – and their families have access to consistent and continuous high quality early care and education services that partner with parents to promote children’s healthy growth and development and prepare them for school and life, and meet the needs of families.
- Addressing the needs of pregnant and parenting teens to ensure their access to high quality early care and education services that support their academic goals, promote positive and effective parenting skills, and contribute to their child’s healthy growth and development.
- Facilitating access to high quality early care and education programs that are responsive to the unique needs of children and families experiencing homelessness.

9. Support efforts to expand the supply of appropriate early care and education services through facility development in communities with a significant shortage of these services.

Such efforts should include, but not be limited to:

- Facilitating the cost and technical assistance of effective construction or renovation of early care and education – centers and family child care homes – facilities in communities with unmet needs for these services.
- Integrating early care and education inclusive of centers and family child care homes in specific plans for land use, housing, transportation, economic, workforce, and community development.

10. Support efforts to ensure that children and their families have timely access to early care and education services during a local, state and/or national emergency.

Such efforts may include:

- Increasing and extending funds ongoing to subsidize early care and education services of the essential workforce and at-risk populations.
- Enhancing child care resource and referral services to directly connect families impacted by the emergency with early care and education programs with the capacity to serve them.
- Waiving liability due to damages relating to COVID-19 infection, transmission, or other related conditions due to the COVID-19 pandemic.