



Policy Roundtable for Child Care & Development Commission

February 8, 2023

WELCOME!



Policy Roundtable for Child Care & Development Commission

Meeting will begin at 10:00 a.m.

Feel free to share
your name & organization
in the chat

**Meeting materials can be accessed at:
OAECE website
<https://childcare.lacounty.gov/prccd/>**



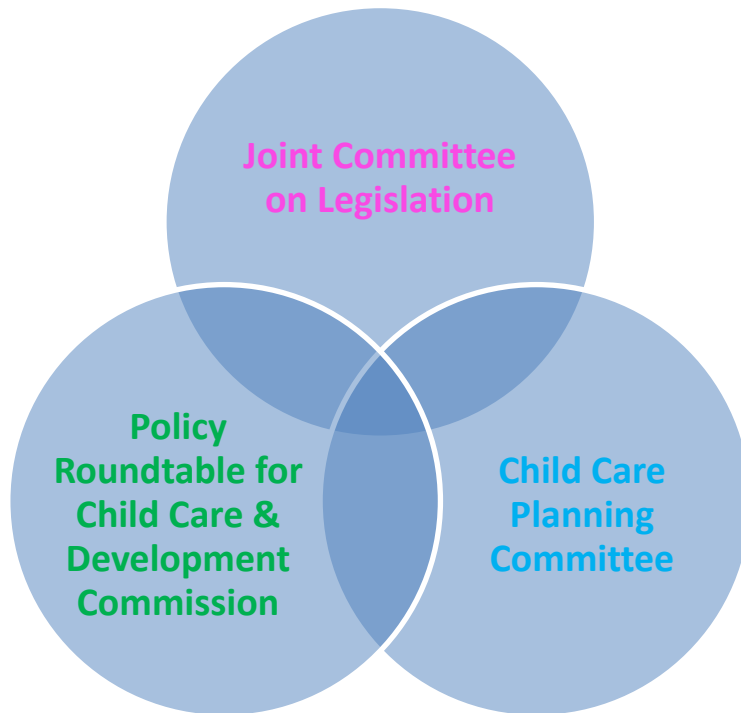
Public Policy

Public Policy Priorities FY 21-22



| ECE Strategic Plan Priority Area | Policy Issue | Policy Ask | OAECE | Role of Roundtable | UPDATE |
|----------------------------------|--|---|----------------------|----------------------|---|
| Access | Facilities: Increase the number of licensed ECE facilities | 1a. Establish an ECE facilities development navigation team within LA County Departments to provide support to ECE providers | Lead | Support | Teams Established |
| | | 1b. Position LA County to draw down funding from \$250M in Federal/State facility expansion funds | Support | Lead | LA applications submitted |
| | | 1c. Advocate for application waivers for licensing of new ECE programs for programs adding a license (i.e., infant/toddler license) | Monitor | Monitor | Facilities Waiver Launching March 1, 2023 |
| | Stabilize ECE services for families | 1d. Expand operations grants for the mixed delivery system, including ECE centers & FCC homes to stabilize ECE services | Lead | Support | Grant program established for \$20,000,000 |
| | | 1e. Support FCC homes with business technical assistance | Lead | Support | Appropriate Co. Funding |
| | | 1f. Extend "Hold Harmless" provision for all subsidized ECE services | Support | Lead | Incorporated in FY 21-22 State budget |
| Quality | Transitional Kindergarten: Ensure universal pre-kindergarten (UPK/TK) is age appropriate & uses whole child approach | 2. Monitor and influence conversations about universal pre-kindergarten (TK expansion) that promotes a mixed delivery system | Monitor (CCPC Leads) | Monitor (CCPC Leads) | \$3.4 million allocated for LA County mixed delivery system planning in UPK |
| Workforce | Workforce: Expand ECE workforce | 3a. Support ECE workforce in improving their qualifications through professional development and providing ECE college students with fee waivers, book scholarships, career advisement, restore Workforce Pathways funding , and child care vouchers | Support | Lead | Funding has not been restored |
| | | 3b. Re-envision the State ECE reimbursement system to cover the true cost of quality care by utilizing the Comprehensive Fiscal Analysis | Monitor | Monitor | System is slowly being restructured |
| | | 3c. Provide financial relief (e.g., stipends, bonuses, tax credits, education loan forgiveness, home buying assistance, and local increases to child care payments) to individuals in ECE workforce | Monitor | Monitor | Federal loan forgiveness for child care providers was available |
| Families & Communities | Parents & Community: Elevate partnering with parents & communities in ECE practice | 4a. Monitor and influence legislation/bills that support family engagement and community connections as an integrated element of all universal preschool programs (including TK) | Monitor (CCPC Leads) | Monitor (CCPC Leads) | Required activity in UPK mixed delivery funding coming to LA County |
| | | 4b. Restore Local Planning Council (LPC) funding to inform the transformation of UPK (ECE services for children ages birth-5) | Support (CCPC Leads) | Support (CCPC Leads) | Support Pursuit of Position on State Leg. Budget |

Purpose and Role of the Joint Committee on Legislation

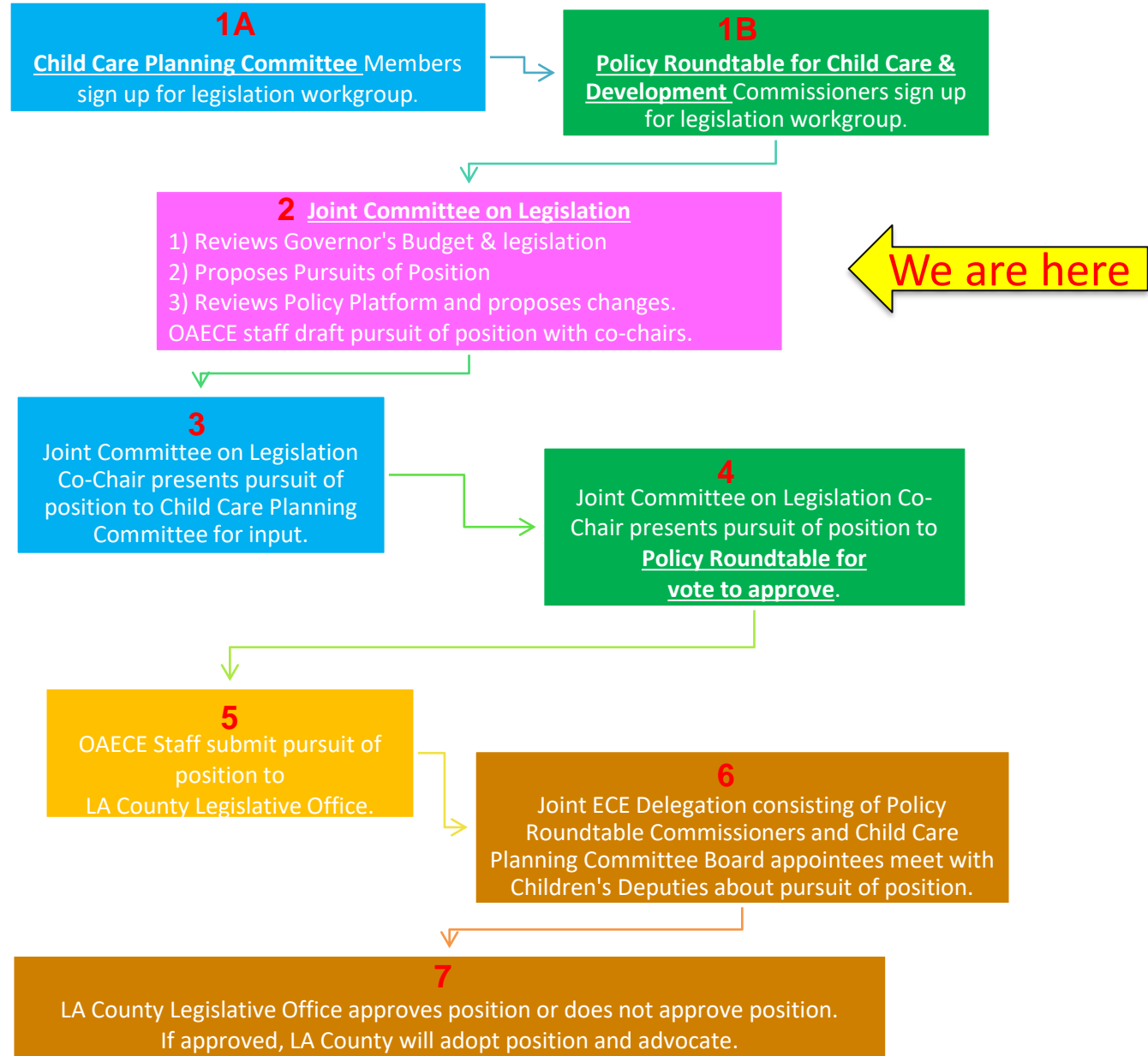


Role of the Joint Committee on Legislation

- Review Governor's Budget & Legislation
- Propose Pursuit of Position
- Review Public Policy Platform and propose changes as needed

For more information, please visit <https://childcare.lacounty.gov>

Purpose & Role



- **Policy Roundtable Commissioners join Committee**
 - Ofelia Medina - member
 - **Need 1 more Commissioner**

- **January 19, 2023 Meeting**
 - Budget and legislation discussion
 - **Increase reimbursement rate**
 - **Support conversations about universal pre-kindergarten (TK expansion) that promotes a mixed delivery system**
 - **Continue family fee waivers for State subsidized ECE**

Discussion

- What are your thoughts about the policy issues that have been elevated?
- What is missing as a policy issue that should be elevated?

Public Policy Priorities



| ECE Strategic Plan Priority Area | Policy Issue | Policy Ask | OAECE | Role of Roundtable | Role of Bd. of Sup. (Authority/ Influence) |
|----------------------------------|---|---|----------------------|----------------------|---|
| Access | Facilities: Increase the number of licensed ECE facilities | 1a. Advocate for application waivers for licensing of new ECE programs for programs adding a license (i.e., infant/toddler license) | Monitor | Monitor | Support Pursuit of Position on State Leg. Budget &/or Sponsor State Leg. |
| | | 1b. Revise County ordinance to simplify process for ECE centers to be developed (New) | Support | Lead | Motion |
| | Stabilize ECE services for families | 1c. Increase reimbursement rate | Support | Lead | Support Pursuit of Position on State Leg. Budget |
| | | 1d. Support FCC homes with business technical assistance | Lead | Support | Appropriate Co. Funding |
| Quality | Transitional Kindergarten: Ensure universal pre-kindergarten (UPK/TK) is age appropriate & uses whole child approach | 2. Support conversations about universal pre-kindergarten (TK expansion) that promotes a mixed delivery system | Support (CCPC Leads) | Support (CCPC Leads) | Pursuit of Position/ Influencer (AB 51 Bonta) |
| Workforce | Workforce: Expand ECE workforce | 3a. Support ECE workforce in improving their qualifications through professional development and providing ECE college students with fee waivers, book scholarships, career advisement, restore Workforce Pathways funding, and child care vouchers | Support | Lead | Appropriate Co. Funding, Support Pursuit of Position on State Leg. Budget, &/or Sponsor State Leg. |
| | | 3b. Provide financial relief (e.g., stipends, bonuses, tax credits, education loan forgiveness, home buying assistance, and local increases to child care payments) to individuals in ECE workforce | Monitor | Monitor | Appropriate Co. Funding, Support Pursuit of Position on State Leg. Budget, &/or Sponsor State Leg. |
| | | 3c. Establish a wage scale for LA County early educators as an advocacy tool (New) | Support | Lead | Motion |
| Families & Communities | Parents & Community: Elevate partnering with parents & communities in ECE practice | 4. Continue family fee waivers for State subsidized ECE | Monitor (CCPC Leads) | Monitor (CCPC Leads) | Approve State Policy Agenda, Support Pursuit of Position on State Leg. Budget, &/or Issue Co. Proclamation |

Next Steps

- 2/16/23: Joint Committee on Legislation
 - Deep dive into legislation & budget
- 3/8/23: Policy Roundtable meeting
 - Vote on Pursuit of Position
- 3/9/23 – 4/11/23: Board of Supervisors Engagement Teams
 - Teams meet with Board of Supervisors and share Pursuit of Position



BREAK
5 Minutes



General Business Approval of Minutes



Our Unified Strategic Plan in Motion



LA County ECE COVID-19 Response Team: Learning, Reflection & Moving Forward



Policy Roundtable for Child Care & Development Commission