



Child Care Planning Committee

Los Angeles County

Local Child Care and Development Planning Council (LPC)

New Member Orientation

Wednesday, September 6th, 2023

10:00 to 11:15 a.m.

Lisa Wilkin, Chair

Manuel Fierro, Vice Chair

Zenaida Meza, OAECE



Opening Comments to New Members

Manuel Fierro, Vice Chair



COUNTY OF LOS ANGELES



CHILD CARE
PLANNING
COMMITTEE

POLICY • PLANNING • PRACTICE

Introductions

Please share!

- Your name
- Your organization or representation
- Your favorite childhood game

COUNTY OF LOS ANGELES



CHILD CARE
PLANNING
COMMITTEE

POLICY • PLANNING • PRACTICE

Early Education and Public Health

Perry Preschool Project participants at 40 years old compared to non-participants:

- **Housing:**
 - More stable dwelling arrangements and car ownership
- **Education:**
 - Higher high school graduation rates
- **Social Supports:**
 - Less use of social services
 - Fewer lifetime arrests
- **Family Income:**
 - Higher median income
- **Employment:**
 - Higher employment rates

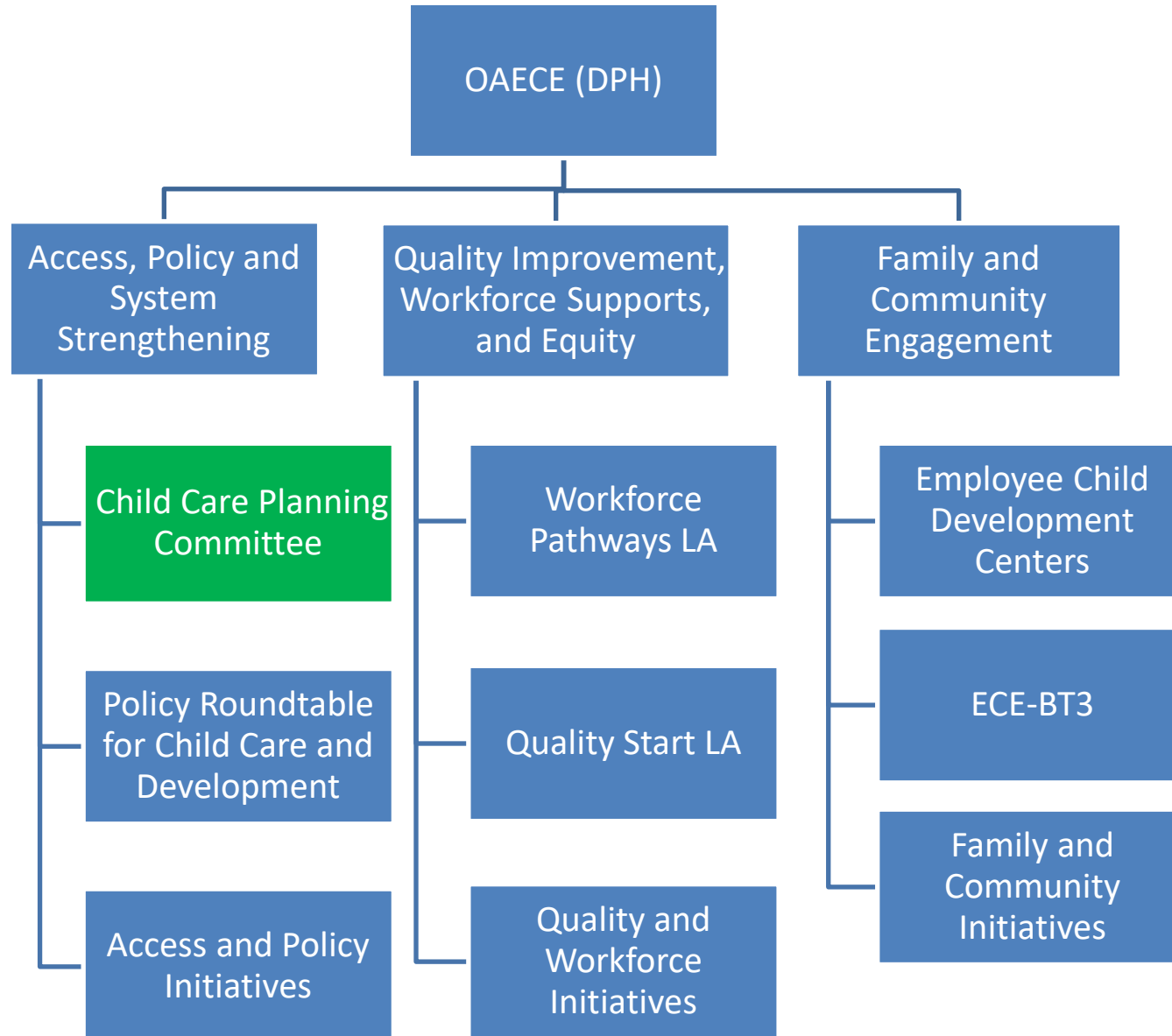
SOCIAL DETERMINANTS OF HEALTH

The social determinants of health are the conditions in which we are born, we grow and age, and in which we live and work. The factors below impact on our health and wellbeing.

The infographic displays eight social determinants of health, each with a corresponding icon and label:

- Childhood experiences:** Icon of two children playing with a ball.
- Housing:** Icon of two purple buildings.
- Education:** Icon of a head with gears inside.
- Social support:** Icon of three people standing together.
- Family income:** Icon of a hand holding three coins.
- Employment:** Icon of two people shaking hands.
- Our communities:** Icon of a group of people with speech bubbles.
- Access to health services:** Icon of a red building with a white cross.

Source: NHS Health Scotland



Child Care Planning Committee

Policy Roundtable for Child Care and Development

Community Engagement

Engages parents, early educators, organizations, and public agencies in planning efforts to improve the overall care and education system.

Strengthens early care and education by providing recommendations to the Board of Supervisors on policy, systems and infrastructure improvement.

Workforce Pathways LA

LA County Employee Child Development Centers

Workforce

Increases qualifications of early educators working in child development centers and family child care homes through stipends and college advisement.

Training and funding for early care and education centers on LA County property.

ECE-Birth Through Three (ECE-BT3)

Systems Strengthening

System Improvement

Fortifies infant/toddler system by increasing licensed capacity and strengthening the skills of early educators who care for infants and toddlers.

Responds to critical early care and education issues faced by LA County.

Meet the OAECE Team



Elizabeth Casprowitz, Intermediate Clerk

Debra Colman, Director

Leanne Drogin, Deputy Director

Meliza Hernandez, Staff Analyst

Betsy Jacoby, Staff Analyst

Charli Lewis, Management Analyst

Zenaida Meza, Staff Analyst

Claudia Valle, Senior Typist Clerk

Erica Weiss, Intermediate Clerk



[Childcare.lacounty.gov](https://childcare.lacounty.gov)

Local Child Care and Development Planning Councils (LPC)

- Administered by the California Department of Social Services
- LPC in every County
- Mission
 - Plan for child care and development services based on the needs of families in the local community
 - Serve as a forum to address the child care needs of all families in the community and for all types of child care, both subsidized and non-subsidized

- **Welfare and Institutions Code - Child Care and Development Services Act Requirements**
 - **Membership**
 - 20% shall be consumers (parents and caregivers)
 - 20% shall be child care providers
 - 20% shall be public agency representatives
 - 20% shall be community representatives
 - 20% shall be at the discretion of the appointing agencies
 - **Governing Process**
 - Chair and Vice Chair
 - Roberts Rule of Order
 - Brown Act



Complete the LPC
Local Funding
Priorities and certify
membership annually.



Serve as a forum on
Early Childhood
Education issues and
collaborate with
stakeholders and
foster partnerships.



Review and provide
input on the Los
Angeles County ECE
Policy Platform every
two years.



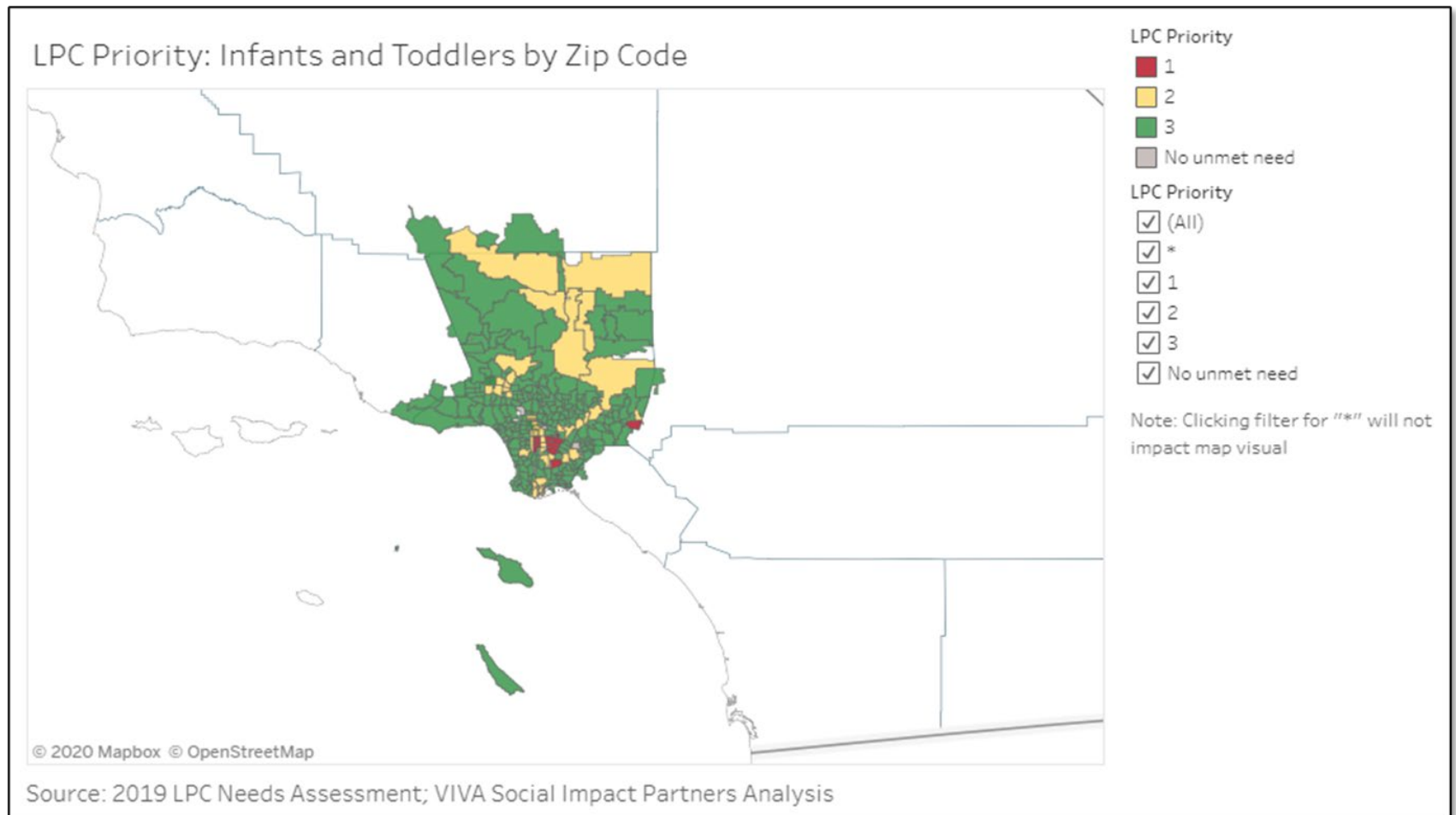
Complete a Child Care
Needs Assessment and
an Early Childhood
Education Strategic
Plan every five years.



Plan for Universal
Prekindergarten Mixed
Delivery System.

• LPC Local Funding Priorities

Location of Priority 1 Zip Codes for Infants and Toddlers in Red



- **Voluntary Temporary Transfer of Funds**



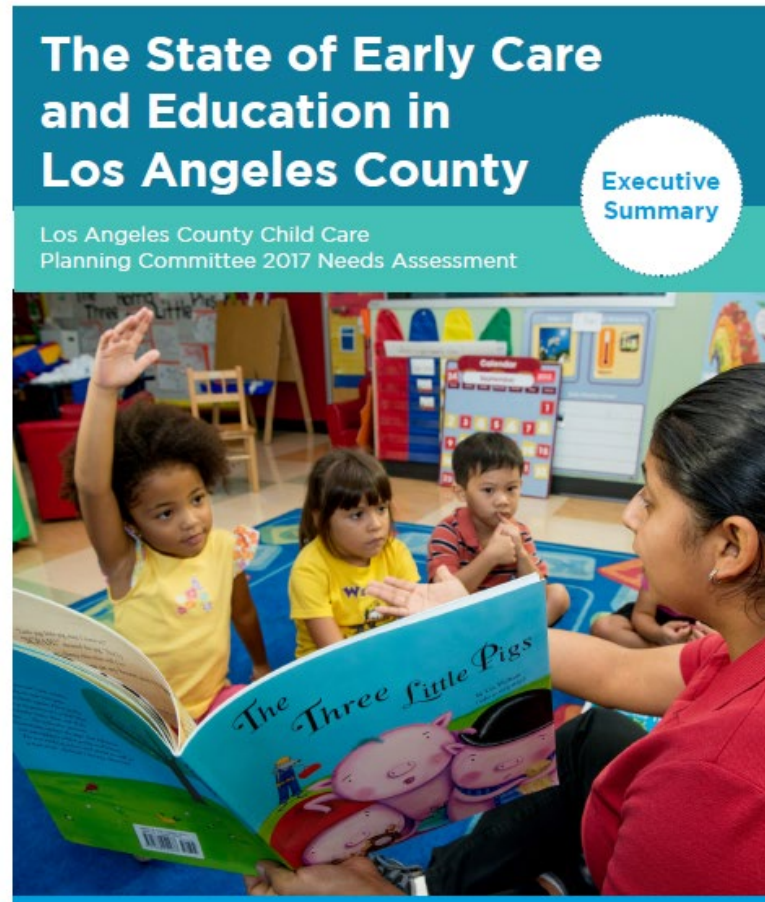
Voluntary, Temporary Transfer of Funds (VTTF) Process
For California Department of Education (CDE) Contractors in Los Angeles County
Developed and Approved by the Los Angeles County Child Care Planning Committee
October 2009; Updated October 2018

Process Development

Per the requirements established by the California Department of Education (CDE), the Los Angeles County Child Care Planning Committee (Planning Committee) formed an ad hoc work group made up of non-CDE contractors who solicited input from current CDE contractors and members of the Planning Committee related to the processing of requests for voluntary, temporary transfers of funds (VTTF). Based on the input from the contractors and on the framework established by CDE for implementing the VTTF, the ad hoc work group developed the procedure described in this document.

The Planning Committee, in approving this procedure, appointed the Los Angeles County Child Care Planning Coordinator (Coordinator) as the designated staff to coordinate activities related to the VTTF including informing CDE contractors, reviewing individual requests through CDE staff, matching and packaging the transfer requests, and submitting the requests within the allotted timeframes to CDE for approval or denial. The Coordinator is charged with maintaining the confidentiality of the requests and all information provided by the agencies participating in the VTTF process. To ensure a fair process, the Coordinator and the Planning Committee's ad hoc VTTF work group developed a method for informing CDE contractors of the VTTF process, reviewing activities, and tracking and documenting all VTTF requests, which was approved by the Planning Committee in June 2009.

- **Child Care Needs Assessment**



- **Strategic Plan**

- Access
- Quality
- Workforce
- Families & Communities



• LA County Policy Priorities and Legislative Agenda



County of Los Angeles
Child Care Planning Committee and
Policy Roundtable for Child Care and Development

PUBLIC POLICY PLATFORM 2021-22 Legislative Session

Introduction

The Child Care Planning Committee (Planning Committee) and Policy Roundtable for Child Care and Development (Roundtable) promote policies designed to increase the availability of and access to affordable, high quality early care and education programs for all children and their families of Los Angeles County. This public policy platform presents current and emerging policy issues in early care and education that are consistent with the County of Los Angeles State Legislative Agenda for the 2021-22 Legislative Session. The platform delineates each of the County's legislative agenda items in **bold** followed by examples of efforts that may be addressed by proposed legislation and/or the proposed state budget.

Platform Issues

1. **Support efforts to enhance the quality of early care and education that set high standards for all services and program types and address the needs of all children, including those with disabilities and other special needs, and their families.**

Such efforts should include, but not be limited to:

- Addressing the early care and education needs of children from birth through age 12, including infants and toddlers, preschool and school age children, and children with disabilities and other special needs up to age 22, and their families.
- Enhancing the quality of centers, family child care homes, and license-exempt care providers.
- Promoting a strengthening families approach to meet the needs of children at risk for abuse, neglect or sexual exploitation or under the supervision of the child welfare system and children of families under the supervision of Probation.
- Integrating early identification and intervention systems that recognize and respond early to young children who may be at risk for disabilities and other special needs.
- Developing policies that encourage collaboration between early care and education programs and locally funded projects and public agencies that foster child and family well-being through the provision of coordinated services.



Universal Prekindergarten Mixed Delivery Planning Grant (UPKMDPG)

- Increase parent's knowledge about early education choices
- Strengthen partnerships between LEAs and mixed delivery system
- Enhance partnerships to support children with special needs
- Increase supports for the preschool workforce



childcare.lacounty.gov

The screenshot shows the homepage of the Office for the Advancement of Early Care and Education. At the top, there is a dark blue navigation bar with social media icons for Twitter, Facebook, Instagram, and YouTube, and a search icon. Below this is the County of Los Angeles Public Health logo, with the tagline "Office for the Advancement of Early Care & Education". A secondary dark blue navigation bar contains links for Home, Public Policy, Publications, Workforce Pathways LA, Planning Committee, Policy Roundtable, Resources, and Special Projects. The main content area features a large background image of children's drawings, including a house, a school bag, and various school supplies. Overlaid on this image is the text "Office For The Advancement Of Early Care And Education" in yellow, followed by a paragraph describing the office's vision. Below this is a section titled "What We Do" with a sub-image of a smiling young girl.

Home Public Policy Publications Workforce Pathways LA Planning Committee Policy Roundtable Resources Special Projects

Office For The Advancement Of Early Care And Education

The Office for the Advancement of Early Care and Education envisions a high quality early care and education system accessible to all families that nurtures children's healthy growth and early learning, fosters protective factors in families, and strengthens communities.

What We Do

The Office for the Advancement of Early Care and Education shapes policy recommendations, facilitates planning, and provides a range of services aimed at improving the availability, quality and access to early care and education programs. The Office supports efforts to promote



Council Member Participation:

- Being a thought partner on ECE issues
- Attending meetings
- Voting on action items
- Participating in group work to focus on specific goals

COUNTY OF LOS ANGELES



CHILD CARE
PLANNING
COMMITTEE

POLICY • PLANNING • PRACTICE

Meeting Attendance

- Members are expected to attend all **5** meetings
- Members may be absent from no more than **3** consecutive meetings
- Termination does not prohibit participation as a guest

Voting on Action Items

- Only members or alternates can vote
- Action items are listed on public agenda 3 days prior to the meeting
- Quorum = 50% of membership (25 members or alternates)

COUNTY OF LOS ANGELES



POLICY • PLANNING • PRACTICE

Role of Alternate

- Alternate is encouraged to attend and participate in discussions
- Members should keep alternate informed
- Alternate can vote in the absence of member

Group Work

- Group work outside of the Planning Committee is important to implement the strategic plan and fulfill the LPC mandates

COUNTY OF LOS ANGELES



POLICY • PLANNING • PRACTICE

Wrap-up and Call to Adjourn Manuel Fierro, Vice Chair

