



# Child Care Planning Committee

Los Angeles County

Local Child Care and Development Planning Council (LPC)

Wednesday, September 6<sup>th</sup>, 2023

12:00 P.M. to 2:00 P.M.

Lisa Wilkin, Chair

Manuel Fierro, Vice Chair

Zenaida Meza, OAECE



## **Opening Statement & Comments**

### **Manuel Fierro, Vice Chair**

#### **Vision Statement**

Children are healthy, thriving and have equitable opportunities to achieve optimal development and succeed in life.

#### **Mission Statement**

Lead, build, and strengthen an affordable and high-quality early care and education system for the children and families of Los Angeles County.

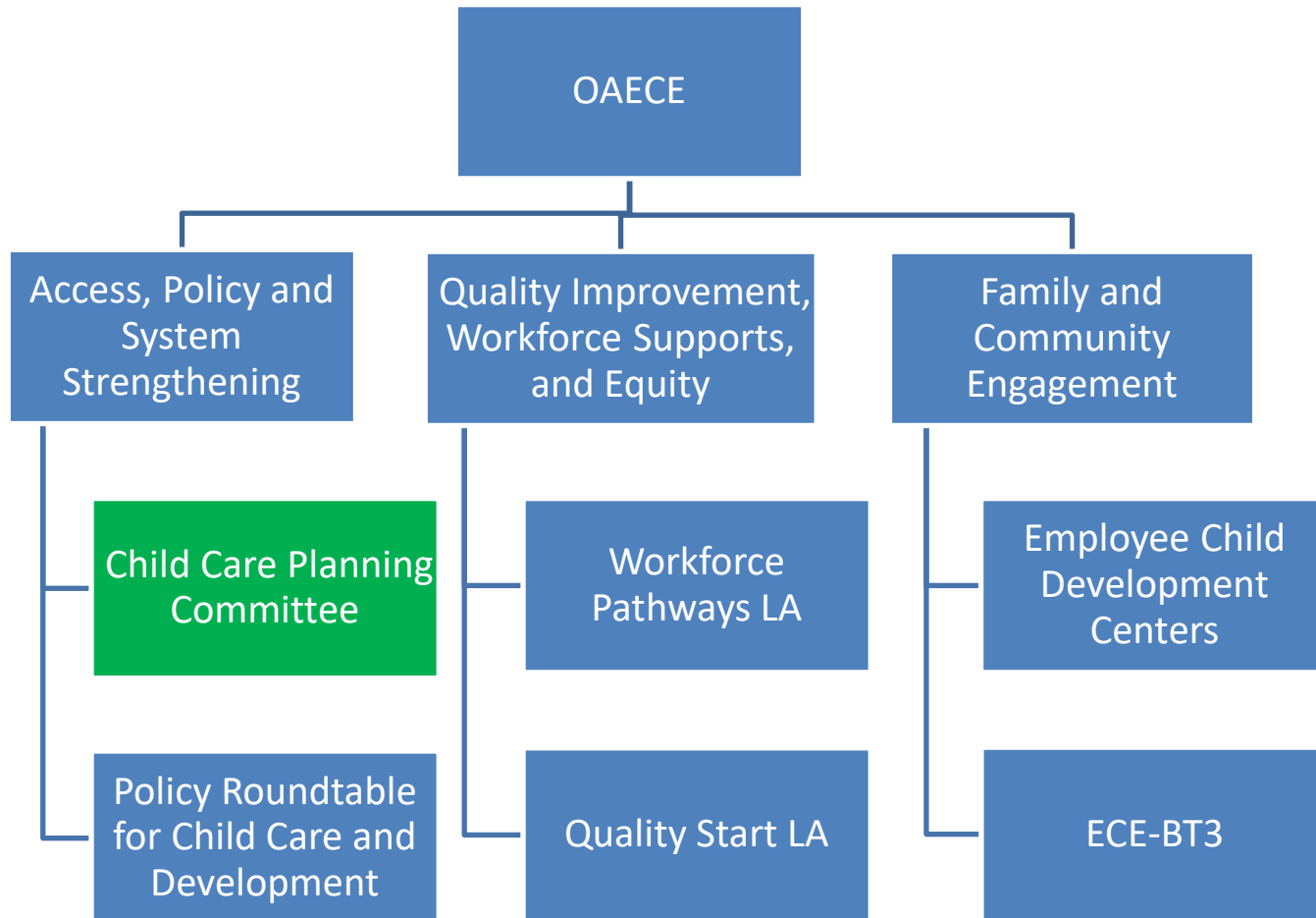


- **Introductions**

- Your name
- Your organization/affiliation
- And your role as a Child Care Planning Committee Member
  - Member, Alternate or Guest



# Roadmap for Our Work



- **\$5 Million in new funding secured** (Hilton, UPK, and LPC restoration)
- **\$1.6 Million distributed to ECE providers** (Workforce Pathways LA and Quality Improvement Grants)
- **888 Financial incentives processed** (WPLA)
- **476 ECE providers trained** (Facility Toolkit, Infant/Toddler Expansion, Professional Learning Community, Trauma Informed Care)
- **35 Collaborative meetings facilitated** (Child Care Planning, Policy Roundtable, Workforce Systems, Access & Inclusion, Family Engagement, Joint Committee on Legislation)
- **26 Invoices/reports collected from partners** (WPLA, ECE-BT3, Quality Improvement)
- **9 Contracts executed** (WPLA, ECE-BT3, Quality Improvement)
- **5 New staff hired**
- **1 Universal PreKindergarten Mixed Delivery Plan Developed**



## Access

Increase access to early care and education services for children birth to five years of age and after school care for children up to age twelve.

## Quality

Strengthen the quality of early care and education services, especially for children and families most in need.

# Priorities and Goals

## Workforce

Improve the compensation and qualifications of the early care and education workforce.

## Families and Communities

Increase engagement of parents, caregivers and communities on early care and education issues.

# Priority 1: Access



Lead	On Hold Due to Pandemic	Planning Phase	In Progress	Completed
<b>Roundtable</b>	1.1.1: Advocate for a single birth to kinder ECE license 1.1.2: Advocate for single subsidized eligibility system			1.2.1: Create tools to help ECE providers navigate systems to open/expand facilities <i>Deliverable-Partnered with LIFF on ECE Facility Development leadership institute</i>
<b>OAECE</b>				1.2.1: Create tools to open/expand ECE facilities <i>Deliverable-Established ECE Facilities Workgroup</i> <i>Deliverable: Launched Facility Development Toolkit</i> <i>Deliverable: Launched Facility Fee Waivers</i> 1.1.3: Support County departments to maximize resources and increase children’s access to ECE <i>Deliverable- \$311,043 in grants to County ECE sites</i> 1.1.5. Support the stabilization of ECE in COVID-19 <i>Deliverable-\$ 9,000,000 in Stabilization Grants.</i> <i>Deliverable- \$17,000,000 in care vouchers</i> <i>Deliverable-3 million masks/761,456 COVID tests</i>
<b>CCPC</b>	1.1.4: Strengthen the voluntary, temporary transfer of funds process		1.3.1: Strengthen ECE Needs Assessment as public tool <i>Deliverable- launch on-line dashboard/ infographics</i>	

# Priority 2: Quality



Lead	On Hold Due to Pandemic	Planning Phase	In Progress	Completed
<b>Roundtable</b>	2.2.1: Advocate for publicly funded quality improvement investments that are locally controlled		2.4.2: Convene community of practice among LA County Departments' early childhood programs <i>Deliverable-Map LA County early childhood programs</i>	
<b>OAECE</b>			2.4.1: Integrate ECE with a centralized access point for a developmental screening (Help Me Grow) <i>Deliverable-Align and connect Help Me Grow with UPK special needs strategy</i>	2.1.1: Strengthen QRIS to reach the broader ECE community <i>Deliverable-OAECE holds seats on Quality Start LA Leadership Council</i>
<b>CCPC</b>	2.3.1: Increase public awareness of the importance of quality through social media			2.1.1: Strengthen QRIS to reach the broader ECE community <i>Deliverable-CCPC holds seats on Quality Start LA Leadership Council</i>



# Priority 3: Workforce



Lead	On Hold Due to Pandemic	Planning Phase	In Progress	Completed January 2020 – June 2023
Roundtable				<p>3.1.1: Advocate for a single reimbursement rate that covers the cost of quality</p> <p><i>Deliverable-LA County adopted position on AB 246 to restructure State reimbursement system</i></p> <p><i>Deliverable-LA County adopted position to increase State reimbursement rate</i></p>
OAECE				<p>3.3.1: Integrate and maximize AB212 as an element of LA quality improvement system</p> <p><i>Deliverable-Hosted forum on LA professional development system and develop recommendations</i></p> <p><i>Deliverable-Developed College Advisement Toolkit</i></p> <p><i>Deliverable: \$4,311,164 in financial incentives to 3,147- early educators</i></p> <p><i>Deliverable- Provided college advisement to over 200 early educators</i></p> <p><i>Deliverable- Added 19 new professional development organizations to the ECE Workforce Registry</i></p> <p>3.3.2: Support COVID-19 recovery by expanding professional development opportunities,</p> <p><i>Deliverable-Conducted professional development for 802 early educators</i></p>
CCPC				<p>3.2.1: Support statewide implementation of a user-friendly workforce registry and use data to inform practice, policy and systems improvement.</p> <p><i>Deliverable: Registry is used by the CDSS/CDE to gather workforce development data.</i></p>

# Priority 4: Families and Communities



Lead	On Hold Due to Pandemic	Planning Phase	In Progress	Completed January 2020 – June 2023
Roundtable		4.2.1: Elevate parent testimonials and parent partnerships for ECE Advocacy <i>Deliverable-TBD</i>		
OAECE				4.1.1: Assure parent and caregiver access to research findings and early care and education issues <i>Deliverable- Conducted 19 forums/webinars on early care and education COVID-19 issues in FY 21-22</i>
CCPC				4.3.1: Strengthen the parent leader voice in the Child Care Planning Committee <i>Deliverable-Established parent/caregiver workgroup as a part of the Planning Committee to inform and influence early care and education planning across LA County.</i>

# OAECE Priorities for FY 23-24



PRIORITY	ACCESS	QUALITY	WORKFORCE	FAMILY/ COMMUNITY
<b>Priority 1: COVID-19 Recovery</b>	<b>Stabilize ECE operations</b>		<b>Support ECE workforce</b>	
<b>Priority 2: Universal PreKindergarten</b>	<b>Fortify infant/toddler care</b>	<b>Inform TK expansion</b>		<b>Inform families about ECE options</b>
<b>Priority 3: Strengthen OAECE infrastructure</b>	<b>Increase OAECE staff capacity</b>			<b>Build external and internal partnerships</b>



- A Child Care and Development Local Planning Council (LPC) is established in every County in California per State statute
  - California Welfare and Institutions Code 10485.
  - It is the intent of the Legislature that local child care and development planning councils shall provide a forum for the identification of local priorities for child care and the development of policies to meet the needs identified within those priorities.
- Administered by the California Department of Social Services
- Child Care Planning Committee is the LA County LPC

- Enacted in State Legislature in 1953
- Government Code Section 54950
- Requires public agencies to conduct business in open forums, with limited exceptions
- **Applies to:**
  - Bodies created by formal action of a local legislative body (i.e., Commissions, Committees, Councils, etc.)
  - “Standing Committee” which has jurisdiction over a particular subject matter or with a fixed meeting schedule
- **Does not apply to:**
  - “ad hoc” has less than quorum, limited term, and not a standing meeting

- **50% of members of the body**
  - 25 Child Care Planning Committee members or alternates
- **Quorum must be present to start a public meeting**



- **What it is**
  - Guide to conducting meetings and making decisions as a group
- **How it works**
  - A decision is carried out through a motion, which is a proposal to do something
- **Who is involved**
  - A member may propose a motion or vote
  - An alternate may act in the role of a member if the member is not present

## **Step 1 - Propose Motion**

A member or alternate proposes a motion. Member should state the motion and their name for the record.

## **Step 2 - Second Motion**

Another member states their name and “seconds” the motion.

## **Step 3 - Discussion**

The chair or vice chair opens the floor to discuss the motion. Discussion is open to members, alternates, and the public.

## **Step 4 - Vote**

The chair/vice chair calls for a vote. Voting options are Yea, Nea, or Abstention. An alternate may only vote if the member is not in attendance.

## **Step 5 - Results of Votes**

Results are shared by stating the motion has passed or not passed.<sup>15</sup>



## OAECE

- Inform partners, advise key stakeholders, and publicly promote the importance of quality ECE
- Convene and nurture committees, commissions and task forces to act as agents of change
- Gather, organize, manage, and disseminate ECE data
- Conceptualize, design, and implement programmatic, policy, and systems change strategies
- Mobilize and support advocacy for public policies that strengthens the ECE system in LA County

## Policy Roundtable

- Develop policy recommendations related to child care and development
- Advise and assist County departments in developing and implementing strategies to connect clients and/or employees to child care and development services.
- Work with CEO to develop recommendations for the Board of Supervisors
- Identify strategies to secure leverage, coordinate, monitor and maximize funding for child care services
- Develop and distribute annual report and recommendations to Board of Supervisors

## Child Care Planning (LPC)

- Conduct Countywide Needs Assessment for ECE every five years
- Develop countywide ECE strategic plan every five years
- Prepare LPC Local Funding Priorities annually
- Facilitate Voluntary Temporary Transfer of Funds between State subsidized programs bi-annually
- Collaborate with stakeholders and foster partnerships
- Serve as a forum on ECE Issues
- Plan for Universal PreKindergarten Mixed Delivery System

## September-December 2023

**Coordinate September LPC meeting**

**Submit LPC membership to CDSS**

**Submit annual report to CDSS**

**Coordinate Fall Voluntary Temporary Transfer of Funds**

**Establish 4 Ad Hoc**

**Coordinate November LPC meeting**

## January-March 2024

**Coordinate February LPC meeting**

**Coordinate Ad Hoc meetings**

**Partner with R&Rs to hire 8 UPK liaisons**

**Hold hearing and approve LPC Local Funding Priorities**

**Coordinate April LPC meeting**

## April-June 2024

**Coordinate Spring Voluntary Temporary Transfer of Funds**

**Submit LPC Local Funding Priorities to CDSS/CDE**

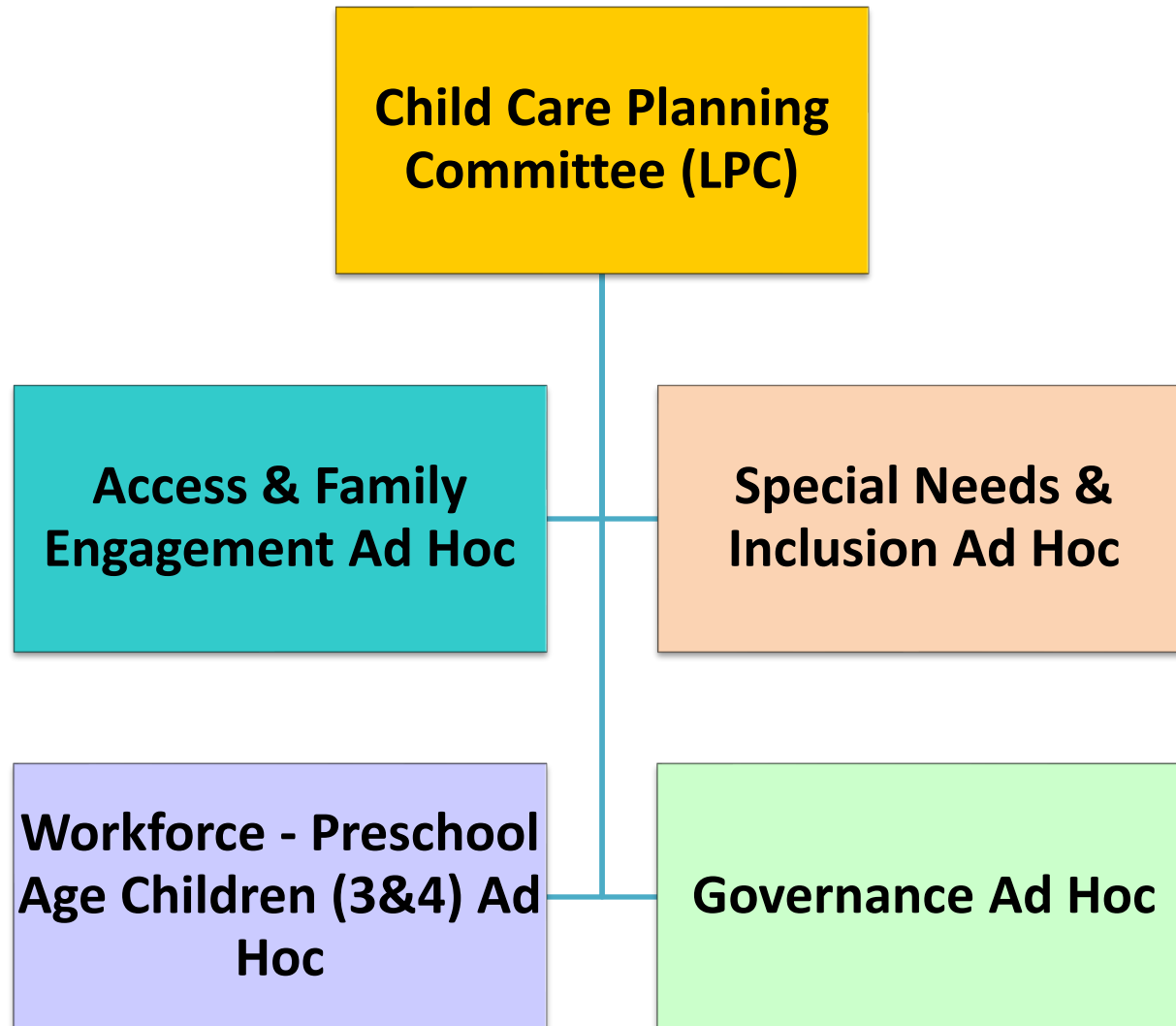
**Convene 8 local UPK collaboratives**

**Revise Public Policy Platform**

**Coordinate Ad Hoc meetings**

**Convene June LPC meeting**

## Child Care Planning Committee (LPC) Ad Hocs



**5A. Approval of Minutes – June 7<sup>th</sup>, 2023 Meeting**

**5B. Approval of Ad Hoc**

**B1. Access & Family Engagement**

**B2. Special Needs & Inclusion**

**B3. Workforce for Preschool Age Children (3&4)**

**B4. Governance**

**Los Angeles County Department of Public  
Health  
School Immunization Project**

**Presenter: Saloniki Madrid, Vaccine Preventable  
Disease Control Program**

## **7A. Announcements, and Public Comment**

## **8A. Call to Adjourn**

**Next meeting on November 1st, 2023  
at The California Endowment!**