



# Child Care Planning Committee

---

Los Angeles County

Local Child Care and Development Planning Council (LPC)

Manuel Fierro, Chair

Andrea Fernandez Mendoza, Vice Chair

Zenaida Meza, LPC Program Manager

Wednesday, February 5, 2024

12:00 p.m. to 2:30 p.m.



# Welcome and Introductions



1A. Reading of the Vision Statement and Mission Statement  
Manuel Fierro, Chair

## Vision Statement

Children are healthy, thriving and have equitable opportunities to achieve optimal development and succeed in life.

---

## Mission Statement

Lead, build, and strengthen an affordable and high-quality early care and education system for the children and families of Los Angeles County.



# Welcome and Introductions



## 1B. Introduction of Committee Members, Alternates, and the Public

Manuel Fierro, Chair



### Chair



**Manuel Fierro**  
**Community Organization**  
**Catalyst California**

### Vice Chair



**Andrea Fernandez Mendoza**  
**Early Educator**  
**California Children's Academy**

# Welcome and Introductions



## 1B. Introduction of Committee Members, Alternates, and the Public

Manuel Fierro, Chair

**Please share your:**

- **Name**
- **Role as a Child Care Planning Committee Member, Alternate, or Public**
- **Organization or Affiliation, if it applies**



# Approval of Minutes



2A. Approval of Minutes – November 6, 2024  
Andrea Fernandez Mendoza, Vice Chair

## 2A. Vote on the Approval of Minutes – November 6, 2024



3A. Presentation on Los Angeles County ECE Response to 2025 Wildfires  
Debra Colman, Office for the Advancement of Early Care and Education  
Cristina Alvarado, Child Care Alliance of Los Angeles

## L.A. County Early Childhood Education Response Team



# Response

2 weeks

Launch team

Listen to ECE field  
Develop plan  
Draft guidance  
Community call

Research State and  
Federal resources  
available for ECE

# Recovery

30 days

Provide guidance

Begin supply  
distribution and  
solicit support as  
needs change

Emergency child  
care, place children,  
connect workforce

# Resilience

6 months

Long-term plan

On-going support  
for ECE workforce  
and access for  
families

Facility renovation  
and development in  
impacted areas



## Connect

# Weekly ECE Community Calls at 10:am on Thursdays



# Inform

**[Childcare.lacounty.gov](https://childcare.lacounty.gov)**: Wildfire resources for ECE providers

## ccala.net: Referrals for parents and ECE providers resources



## Assess

## Number of sites open and closed

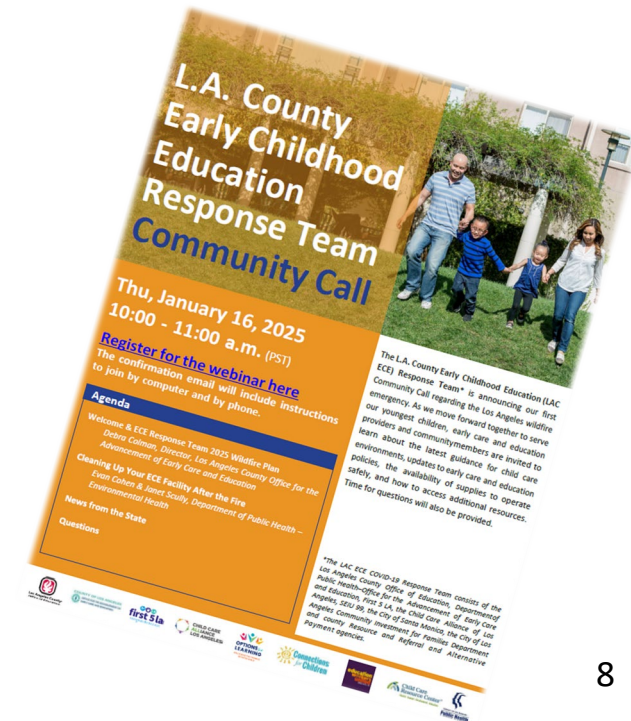


## Support

## Eaton Canyon: Options for Learning and Pacific Oaks

# Palisades: Connections for Children

## Hurst: Child Care Resource Center



**Community Care Licensing  
Facility Damage Assessment  
01/26/2025**

<b>Assessment</b>	<b>Eaton Canyon Fire</b>	<b>Palisades Fire</b>
<b>Facilities Impacted</b>	139	83
<b>Facilities Destroyed</b>	16	5
<b>Facilities Damaged</b>	1	3
<b>Children Impacted by Closures</b>	7,299	6,517

## Public Health Guidance Now Available

- Returning to a Child Care Facility After a Wildfire
- Visit the Office of Early Care and education at [childcare.lacounty.gov](http://childcare.lacounty.gov)



### Returning to a Child Care Facility After a Wildfire

Take Precautions. Be Safe. Protect Your Health.



#### Ash Clean-up and Safety in Child Care Sites Without Fire Damage



- Ash, soot, dust, and other airborne particles may have been deposited inside and outside of the child care site.
- Ash from wildfires is relatively non-toxic but can irritate, skin, eyes, nose, and throat. Ash in air may trigger asthmatic attacks in people who already have asthma.
- Ash, dust, and debris (particularly from burned buildings) may contain toxic and cancer-causing chemicals, including asbestos, arsenic, and lead.

#### Ensure your safety



- If handling broken material (i.e., glass, metals, wood, etc.) wear gloves that protect against cuts, abrasions and punctures (i.e., leather or Kevlar gloves).



- A disposable N-95 mask or better can be worn during clean-up to avoid breathing in ash and other airborne particles. However, they do not protect from gases. Masks may be purchased from a hardware store. N-95 masks must be properly fitted, with no gaps around the edges. An improperly fitted mask is the same as wearing no mask at all.



- Wear safety goggles (not safety glasses) if clean-up may cause ash in the air and if using chemical cleaning solutions, to prevent splashing into the eyes.



- Wear long sleeved shirts, long pants and safety shoes or sturdy close-toed, high-ankle leather shoes if burn debris (i.e., broken glass, metal, wood, etc.) is in the area that is being cleaned.
- Shower regularly throughout the day when cleaning in and out of areas with ash.

For more information on Fire Safety and Health Information  
<http://publichealth.lacounty.gov/media/Wildfire/>

## Trauma Informed Self-Regulation and Mindfulness Workshops

- Contact Drew Child Development at [www.drewcdc.org](http://www.drewcdc.org)
- (323) 249-2950

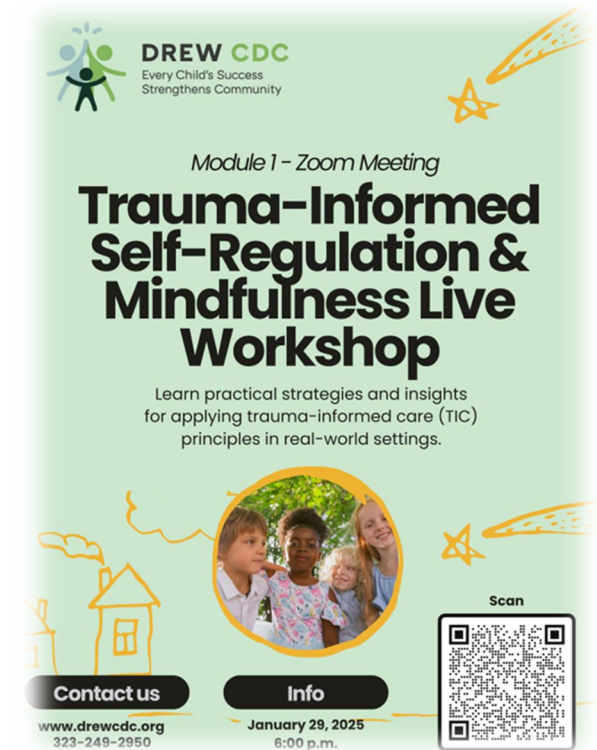
## Support for Early Educators/Locate Child Care

- Visit the Child Care Alliance of LA at [ccala.net](http://ccala.net) or call (888) 922-4453

## Support & Supply Distribution for ECE providers in Hurst Area – Child Care Resource Center



- Air Purifiers
- Diapers
- Cleaning Supplies



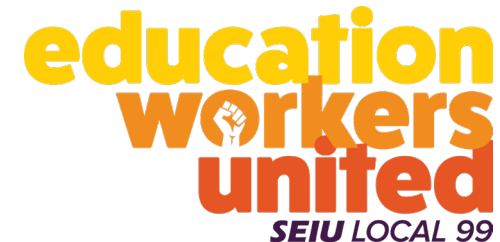
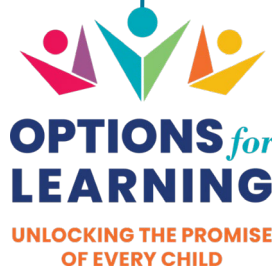
## Support & Supply Distribution for ECE providers Eaton Canyon Area

**Every Wednesday from 4 pm – 7 pm**  
Community Care Licensing Staff will be  
available at Pacific Oaks College

**Altadena Disaster Recovery Center**  
540 W. Woodbury Rd. Altadena, CA 91001  
Hours Daily: 9 a.m. to 8 p.m.

**01/25/2025 & 2/01/25 - Saturday**  
Supply Distribution for ECE providers at  
Pacific Oaks College in Pasadena

- Air Purifiers
- Cleaning Supplies
- Diapers
- Community Care Licensing Info Table



## Support & Supply Distribution for ECE providers Pacific Palisades Area

### Palisades Disaster Recovery Center

UCLA Research Park West

10850 West Pico Blvd.

Los Angeles, CA 90064

Hours Daily: 9 a.m. to 8 p.m.

**02/08/2025 – Saturday from 9 AM – 12 PM**

Location: Connections for Children

Times: 9 AM – 12 PM

Supply distribution

- Air Purifiers
- Cleaning Supplies



COMMUNITY  
INVESTMENT  
FOR FAMILIES  
DEPARTMENT  
*Paths to Prosperity*



City of  
**Santa  
Monica**



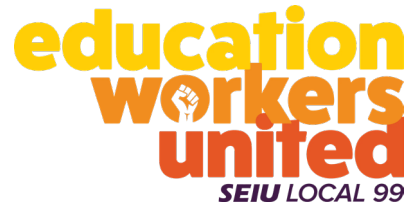
CHILD CARE  
ALLIANCE  
LOS ANGELES



# L.A. County Early Childhood Education Response Team

## Child Care Planning Committee Members

---



Jen Baca Beltran, Discretionary



Jessica Reynaga, Parent



Ivy Chang, Discretionary



Rachel Bocarsly, Public Agency

3B. Discussion Among Committee Members

3C. Public Comment

Rachel Bocarsly, City of Los Angeles and Jen Baca Beltran, SEIU Local 99

- 1. How can the Child Care Planning Committee support the wildfire response for ECE?**
- 2. What information ECE providers need to support operations?**



4A. Presentation on the Governor's Proposed Budget for 2025-26/Early Care and Education

Justin Blakely, Policy Roundtable for Child Care and Development Commission Vice Chair

## Governor's January Proposed 2025-26 State Budget

**JUSTIN BLAKELY, VICE CHAIR**

LOS ANGELES COUNTY POLICY ROUNDTABLE FOR CHILD CARE AND DEVELOPMENT  
PUBLIC POLICY MANAGER, CRYSTAL STAIRS

# Governor's January Proposed 2025-26 State Budget

**JUSTIN BLAKELY, VICE CHAIR**

LOS ANGELES COUNTY POLICY ROUNDTABLE FOR CHILD CARE AND DEVELOPMENT

PUBLIC POLICY MANAGER, CRYSTAL STAIRS



# California's State Budget Process

- ▶ **The State Legislature reconvened on Monday, January 6, 2025**
- ▶ **Governor Newsom is required by the State Constitution to submit a budget to the Legislature by January 10<sup>th</sup>**
  - ▶ May Budget Revision is due by May 14<sup>th</sup>
- ▶ **The Legislature is required to pass a balanced Budget Act by June 15<sup>th</sup>**
  - ▶ Governor Newsom must sign the Budget Act by June 30<sup>th</sup>
  - ▶ Budget negotiations can continue throughout the summer and fall

# Summary of the Governor's January Proposed 2025-26 State Budget

- ▶ The Governor released his 2025/26 January proposed budget on Friday, January 10th
  - ▶ The budget is balanced at \$322.2 billion
- ▶ The Governor's administration forecasts General Fund Revenues will be \$16.5 billion higher than the 2024 Budget Act due to a stronger economy, stock market and cash receipts
- ▶ **Governor Newsom's budget proposes no cuts to early care and education programs**

# Summary of the Governor's January Proposed 2025-26 State Budget

## ▶ **Alternative Reimbursement Rate Methodology:**

- ▶ The Governor's administration continues to work towards a single rate structure and utilization of an alternative methodology for estimating the costs of care.
  - ▶ Per Chapter 73, Statutes of 2024, the Administration will provide the Legislature a timeline for transitioning to reimbursement rates informed by the cost of care under the state's alternative methodology, rather than the current structure that is largely informed by the private market rates.

## ▶ **Cost of Care Plus Rate Payments:**

- ▶ The Budget maintains funding to continue the Cost of Care Plus Rate monthly payments adopted for state-subsidized child care providers, consistent with the requirements related to the reimbursement floor established in the 2024 Budget Act.

# Summary of the Governor's January Proposed 2025-26 State Budget

## ▶ **Child Care Spaces:**

- ▶ The Governor's budget did not outline specific spending for child care spaces, the expectation is that the Administration will keep its commitment to fully funding 200,000 child care spaces by the 2027-28 fiscal year
- ▶ The expectation is that the state will fund 12,000 slots in the 2026-27 fiscal year and 17,000 additional slots in the 2027-28 fiscal year

## ▶ **CCPU Collective Bargaining Agreement:**

- ▶ The current MOU with Child Care Providers United-California (CCPU) is set to expire on June 30, 2025. The state will continue to negotiate a successor agreement with CCPU

# Analysis of the Governor's January Proposed 2025-26 State Budget

- ▶ Protect and preserve investments to the ECE system previously committed
- ▶ Educate the freshmen class of new Assembly members and Senators in the State Legislature
- ▶ Governor's Administration has communicated to state agencies not to submit any new funding request in advance of the May Revision budget proposal
- ▶ Governor and State Legislature is cautious on any new spending as the state grapples with new Federal administration and LA County Wildfire Recovery
- ▶ State income taxes due by April 15, 2025 is now postponed **for those impacted by the LA County Wildfires** to October 15, 2025

4B. Presentation on 2025-26 Proposed Legislation and Child Care Regulation Update  
Lisa Wilkin, Joint Committee on Legislation Co-chair

## Homelessness Eligibility

- Families that are displaced due to the fires and are seeking permanent housing qualify for CSPP, CCTR and CAPP funding under the “Homelessness” eligibility category and would be allowed to enroll immediately upon filling out the application and be given a 30 day timeline to provide all necessary documentation.
  - b. If the basis of eligibility is established by parental declaration pursuant to (1)(b) above, the parent shall provide documentation to establish a need in accordance with section III, paragraph B, *Need Requirements*. 5 CCR 18090

4B. Presentation on 2025-26 Proposed Legislation and Child Care Regulation Update  
Lisa Wilkin, Joint Committee on Legislation Co-chair

## Homelessness Eligibility

- If the parents have a need due to work, training or job seek, they would document their actual need and receive the appropriate number of hours. Homelessness as a need category can provide the family a maximum of less than 30 hours (29.99) hours per week.
- Homelessness need and eligibility are subject to family fees.
- Certification would be for 24 months.

4B. Presentation on 2025-26 Proposed Legislation and Child Care Regulation Update  
Lisa Wilkin, Joint Committee on Legislation Co-chair


## Relevant ECE Legislation

- **AB 1808 (Nguyen):**
  - Extends eligibility for CalWORKs Child Care Programs from 12 months to 24 months, with implementation postponed no later than July 1, 2025.
- **AB 49 (Muratsuchi):**
  - Establishes entry requirements for school sites and day care centers related to immigration enforcement.
- **SB 48 (Gonzalez):**
  - Addresses immigration enforcement at school sites, prohibiting access, information sharing, and law enforcement collaboration.
- **AB 2866 (Signed into Law 9/27/24)**
  - Specific drowning prevention safety requirements for licensed child care centers with in-ground pools, and licensed family child care homes that are operated at private single-family homes with an in-ground pool.

4C. Discussion Among Committee Members

4D. Public Comment

Manuel Fierro, Chair

- 
1. **What budget issues do you think the Joint Committee on Legislation should prioritize?**
  2. **What legislation that should be elevated by the Joint Committee on Legislation?**

## 5A. Presentation on How to Create Safe Spaces in an ECE Programs

Liza M. Davis, Esquire, The Children's Partnership



# Protecting Immigrant Students' and Families' Access to ECE

February 2025

[www.childrenspartnership.org](http://www.childrenspartnership.org) @kidspartnership



5B. Discussion Among Committee Members

5C. Public Comment

Manuel Fierro, Chair



- 1. How can the Child Care Planning Committee be supportive of ECE programs and immigrant families?**

## 6A. Presentation of Child Care Planning Committee Launch of Membership Fiscal Year 2025-2026

Saul Hurtado and Lisa Wilkin, Governance Ad hoc Co-chairs

### **Purpose:**

To oversee the Planning Committee governance and reporting processes and review proposed changes to the Planning Committee Member Policies and Procedures Manual.

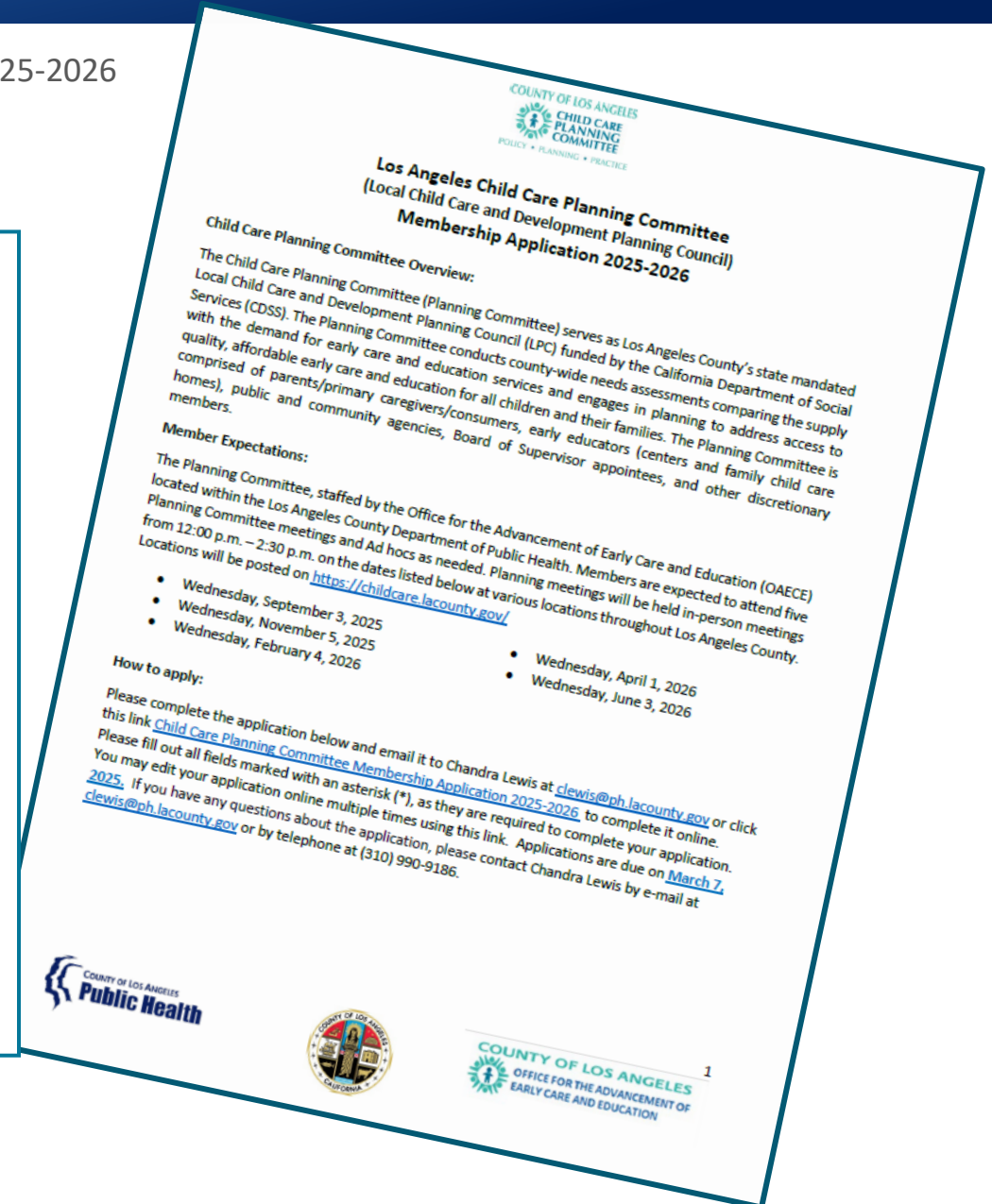
### **Goal for 2024-25:**

Inform the membership application process, develop the membership slate for fiscal year 2025-2026, and review and present LPC state reports to the Planning Committee for approval.

# Governance Ad hoc Update

6A. Presentation of Child Care Planning Committee Launch of Membership Fiscal Year 2025-2026  
Saul Hurtado and Lisa Wilkin, Governance Ad hoc Co-chairs

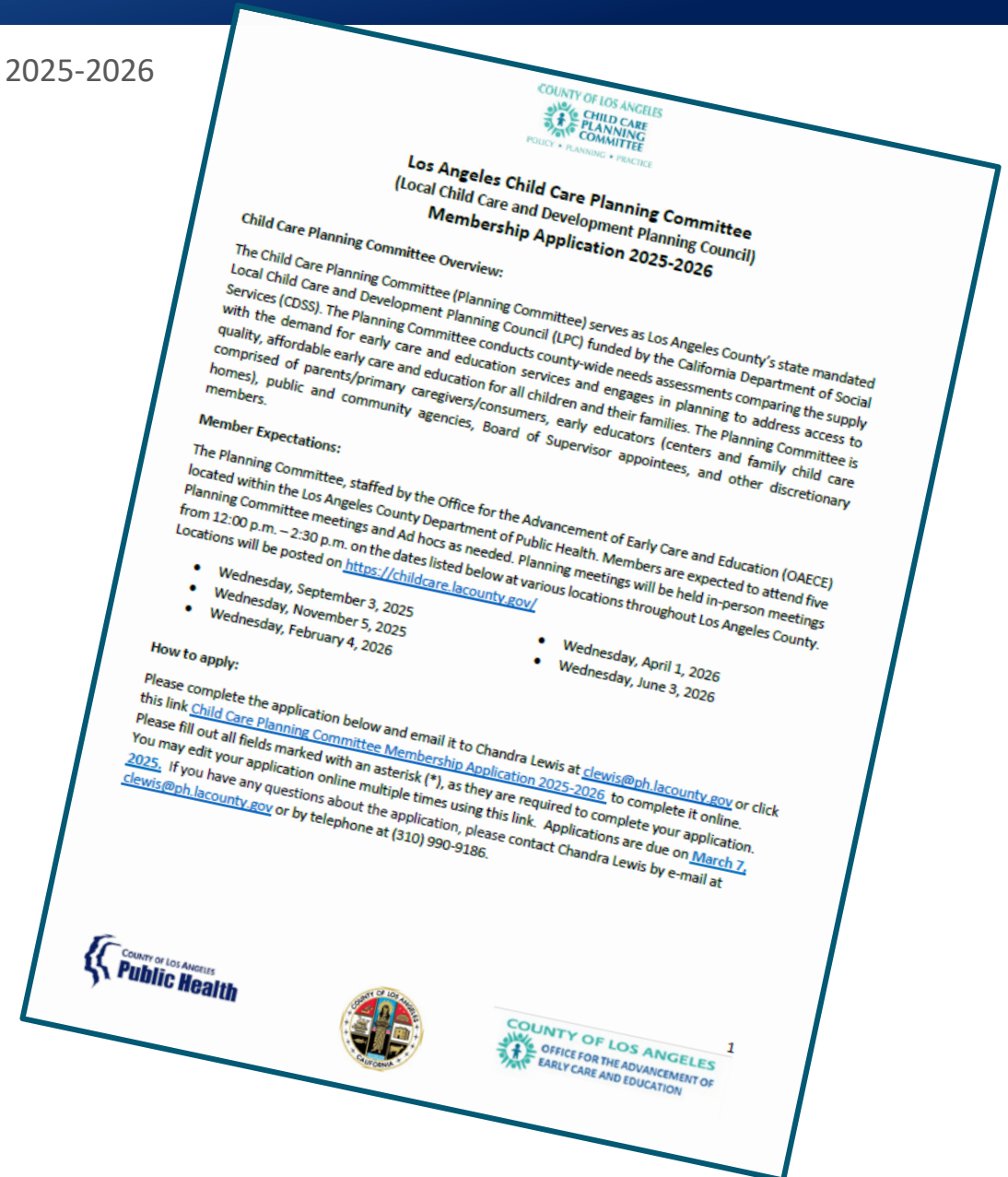
- Membership Application due date:
  - March 7, 2025.
- Membership Term Limits
- Chair and Vice Chair Update
- Application Distribution Channels:
  - Long Beach Early Childhood Education Committee
  - Quality Start LA social media platforms
  - Parent Networks, such as:
    - Community Voices, InnerCity Struggle, and Families in School



# Governance Ad hoc Update

6A. Presentation of Child Care Planning Committee Launch of Membership Fiscal Year 2025-2026  
Saul Hurtado and Lisa Wilkin, Governance Ad hoc Co-chairs

Scan here for the online Planning Committee  
Membership  
Application FY 2025-26



# Discussion and Public Comment

6B. Discussion Among Committee Members

6C. Public Comment

Manuel Fierro, Chair

- 1. Discussion among Child Care Planning Committee Members**
- 2. Public Comment**



## 7A. General Public Comment and Announcements

Andrea Fernandez Mendoza, Vice Chair



## General Public Comment And Announcements

# Call to Adjourn

8A. Call to Adjourn  
Manuel Fierro, Chair

**See you at our next meeting  
Wednesday, April 2, 2025!  
St. Anne's Family Services**



[childcare.lacounty.gov](http://childcare.lacounty.gov)

