

# Child Care Planning Committee Orientation

---

Los Angeles County Local Child Care and  
Development Planning Council (LPC)

Manuel Fierro, Child Care Planning Committee Chair

Andrea Fernandez Mendoza, Child Care Planning Committee Vice Chair

Debra Colman, OAECE Director

Wednesday, August 27, 2025

11:00 p.m. to 12:00 p.m.

## Vision Statement

Children are healthy, thriving and have equitable opportunities to achieve optimal development and succeed in life.

---

## Mission Statement

Lead, build, and strengthen an affordable and high-quality early care and education system for the children and families of Los Angeles County.



## COUNTY OF LOS ANGELES



### Chair



**Manuel Fierro**

### Vice Chair



**Andrea Fernandez Mendoza**



**Los Angeles County  
Board of Supervisors (BOS)**



**Los Angeles County  
Department of Public Health (DPH)**



**Los Angeles County Office For The  
Advancement Of Early Care and Education  
(OAECE)**



**Los Angeles County Child Care Planning  
Committee/Local Planning Council (LPC)**



## Department of Public Health and Office for the Advancement of Early Care and Education

### Perry Preschool Project

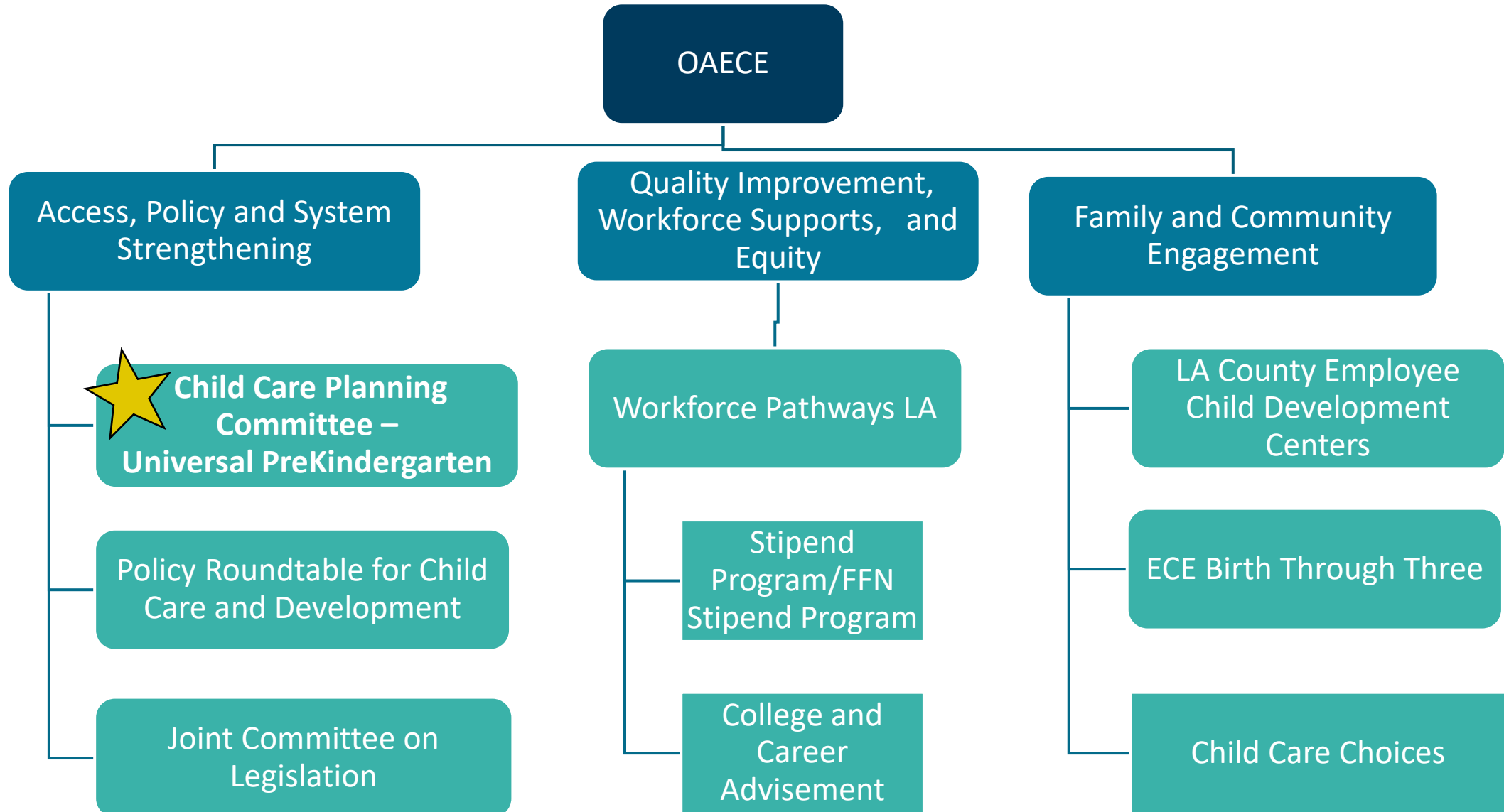
Participants at 40-years-old compared to non-participants:

- More stable dwelling arrangements and car ownership
- Higher high school graduation rates
- Higher employment rates
- Higher median income
- Less use of social services
- Fewer lifetime arrests



based on work for First Nations Health Authority at Gathering Wisdom VI

Drawing  
change





**AB 2141 authorized local councils** to determine child care needs and to prepare a Countywide plan for child care and development.

- 1991 - LA County Board of Supervisors authorized convening the LA County County Child Care and Development Block Grant Planning Council in response to AB 2141.
- 1992 – LA County County Board of Supervisors delegated the responsibility for countywide child care to the council, which was renamed to Child Care Planning Committee





## Welfare and Institutions Code - Child Care and Development Services Act Requirements

- 20% shall be consumers (parents and caregivers)
- 20% shall be child care providers
- 20% shall be public agency representatives
- 20% shall be community representatives
- 20% shall be at the discretion of the appointing agencies

## Governance

- Leadership Team
  - Chair and Vice Chair
- Roberts Rules of Order
- Brown Act

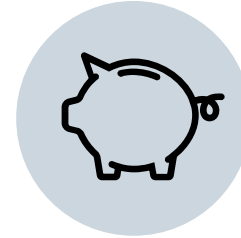




# Key Responsibilities of the Planning Committee



Complete the LPC Local Funding Priorities and certify membership annually.



Coordinate the Voluntary Temporary Transfer of Funds process



Provides input on policy issues through the Joint Committee on Legislation



Develop a Child Care Needs Assessment every five years.



Plan for Universal Prekindergarten Mixed Delivery System.



Develop countywide ECE strategic plan every five years

## What is it?

- Compares the number of LA County children income eligible\* for subsidized early care and education services, to the number of children enrolled in subsidized early care and education




\*ELNAT defines “income eligible” in alignment with the state eligibility guidelines according to the year of the data set.

- Separated by zip code & age group:

## How is it used?

- State departments consider the report when distributing funding to promote equal access to child development services
- Excel and PDF reports are available at [childcare.lacounty.gov/lpc/#activities](https://childcare.lacounty.gov/lpc/#activities)

\*Management Bulletin 15-04. Local Child Care and Development Planning Council Funding Priority Setting Process. June 2015. Available at <https://cdss.ca.gov/inforesources/child-care-and-development/quality-improvement-initiatives/local-child-care-and-development-planning-councils/management-bulletin-15-04>

Local Planning Council (LPC) Local Funding Priorities Background Data - FY 2022-2023

Infant and Toddler (Birth to 35 Months)

Service Planning Area (SPA)	Supervisory District	Zip Code	Estimated Number of Infants & Toddlers Eligible for Subsidized Care	Number of Children Served in Subsidized Spaces	Number of Children NOT Served in Subsidized Spaces	Percentage of Children NOT Served in Subsidized Spaces	2022-2023 Priority
6	2	90001	2924	204	2720	93%	1
6	2	90002	2548	187	2361	93%	1
6	2	90003	3218	201	3017	94%	1
4	2	90004	1356	121	1235	91%	2
4	1	90005	909	32	877	96%	3
4	2	90006	1647	155	1492	91%	2
6	2	90007	1205	248	957	79%	2
6	2	90008	506	85	421	83%	3
5	4	90009	0	0	0	No unmet need	No unmet need
4	2	90010	87	3	84	97%	3
6	2	90011	4853	236	4617	95%	1
4	1	90012	1096	46	1050	96%	2
4	1	90013	434	5	429	99%	3
4	1	90014	259	1	258	100%	3
4	1	90015	580	215	365	63%	3
4	1	90016	773	86	687	89%	3
6	2	90017	606	89	517	85%	3
6	2	90018	1133	204	929	82%	2
4	2	90019	977	87	890	91%	2
4	2	90020	955	46	909	95%	2
4	1	90021	145	37	108	74%	3
7	1	90022	2080	190	1890	91%	1
4	1	90023	1593	140	1453	91%	2
5	3	90024	278	1	277	100%	3
5	3	90025	248	8	240	97%	3
4	1	90026	1700	337	1363	80%	2
4	3	90027	878	28	850	97%	2
4	3	90028	518	65	453	87%	3
7	4	90029	717	32	685	96%	3
4	1	90030	0	0	0	No unmet need	No unmet need
7	4	90031	1005	182	823	82%	2
8	2	90032	772	223	549	71%	3
4	1	90033	1801	192	1609	89%	1
8	2	90034	539	61	478	89%	3
5	2	90035	364	12	352	97%	3
4	3	90036	473	7	466	99%	3
6	2	90037	2733	169	2564	94%	1
4	3	90038	520	115	405	78%	3
4	1	90039	471	5	466	99%	3
7	1	90040	465	84	381	82%	3

LPC Local Funding Priorities Background Data Approved by the Child Care Planning Committee (LPC) on May 3, 2023.

- **Temporary transfer of funds between ECE contracts from the California Department of Education or the California Department Social Services**
  - Available for programs that may be under- or over-earning their contracts.
  - Ensures that funds are retained within the LA County
- **Eligible Programs**
  - General Child Care and Development (CCTR)
    - Includes CCTR administered Family Child Care Home Education Networks (FCCHEN)
  - Family Child Care Home Education Network (CFCC)
  - Alternate Payment Program (CAPP)
  - California State Preschool Program (CSPP)
- **Timeline**
  - Fall – October/November 2025
  - Spring – April/May 2026





- **Standing Committee**


- Held by Brown Act and meets in-person

- **Appointees**

- 4 appointees from Child Care Planning Committee
- 4 appointees from Policy Roundtable for Child Care and Development (Policy Roundtable)

- **Purpose**

- Discusses the State and Federal budget
- Analyzes proposed State and Federal legislation
- Informs positions on ECE issues which are approved by the Policy Roundtable.



County of Los Angeles  
Child Care Planning Committee and  
Policy Roundtable for Child Care and Development

**PROPOSED PUBLIC POLICY PLATFORM for  
2025-2026 Legislative Session**

**Introduction**


The Child Care Planning Committee (Planning Committee) and Policy Roundtable for Child Care and Development (Roundtable) promote policies designed to increase the availability of and access to affordable, high quality early care and education programs for all children and their families of Los Angeles County. This proposed public policy platform presents current and emerging policy issues in early care and education that are consistent with the County of Los Angeles State Legislative Agenda for the 2025-2026 Legislative Session. The platform delineates each of the County's legislative agenda items in **bold** followed by examples of efforts that may be addressed by proposed legislation and/or the proposed state budget.

**Platform Issues**


1. **Support efforts to enhance the quality of early care and education that set high standards for all services and program types and address the needs of all children, including those with disabilities and other special needs, and their families.**

Such efforts should include, but not be limited to:


- Addressing the early care and education needs of children from birth through age 12, including infants and toddlers, preschool and school age children, and children with disabilities and other special needs up to age 22, and their families.
- Define a mixed-delivery system as schools, centers and family child care home programs, and family, friends, and neighbors that provide parental choice through quality options for children and their families.
- Enhancing the quality of centers, family child care homes, and license-exempt care providers.
- Promoting a strengthening families approach to meet the needs of children at risk for abuse, neglect or sexual exploitation or under the supervision of the child welfare system and children of families under the supervision of Probation.
- Integrating early identification and intervention systems that recognize and respond early to young children who may be at risk for disabilities and other special needs.
- Developing policies that encourage collaboration between early care and education programs and locally funded projects and public agencies that foster child and family well-being through the provision of coordinated services.



COUNTY OF LOS ANGELES  
OFFICE FOR THE ADVANCEMENT OF  
EARLY CARE AND EDUCATION



COUNTY OF LOS ANGELES  
Public Health



COUNTY OF LOS ANGELES  
CALIFORNIA

## What is the Early Care and Education (ECE) Needs Assessment?

- Assesses the availability of early care and education
- Identifies resources and gaps
- Conducted every five years
- Available at [www.childcare.lacounty.gov](http://www.childcare.lacounty.gov)
  - 2022 Technical Data Report
  - 2023 Needs Assessment Brief





## Early Care and Education(ECE) Strategic Plan

- Comprehensive countywide plan
- Developed every five years
- Current Strategic Plan
  - Access
  - Quality
  - Workforce
  - Families and Communities
- New strategic planning is taking place in FY 25-26



# Universal PreKindergarten (UPK) Mixed Delivery Planning



Goal 1: Increase parents' knowledge about their early education choices



Goal 2: Strengthen partnerships between school districts and ECE mixed delivery systems



Goal 3: Enhance partnerships to support children with special needs



Goal 4: Increase supports for UPK workforce



[childcare.lacounty.gov/LPC](http://childcare.lacounty.gov/LPC)

# Your Role as a Planning Committee/LPC Member



- Serve as an appointed councilmember
  - Appointed by LA County Board of Supervisors and LA County Superintendent of Schools
- Be a thought partner on ECE issues
- Vote on action items
- Attend meetings
- Participate in Ad hoc on specific areas of work





## Meeting Attendance

- Members are expected to attend all **5** meetings
- Members may be absent from no more than **3** consecutive meetings
- Termination does not prohibit participation as a guest

## Voting on Action Items

- Only members or alternates can vote
- Action items are listed on public agenda 3 days prior to the meeting
- Quorum = 50% of membership (25 members or alternates)

## Role of Alternate Member

- Alternate is encouraged to attend and participate in discussions
- Members should keep alternate informed
- Alternate can vote in the absence of member

## Ad hocs

- Ad hoc work outside of the Planning Committee is important to fulfill the LPC mandates
- Ad hocs are established as needed during the program year to address particular issues

## Councilmember Opportunities

- Provide input on ECE issues and be a thought partner
- Connect with ECE stakeholders
- Share information about your activities or programs.
- Receive information about emerging ECE issues
  - Resources for Parents
  - Resources for ECE providers
  - Emerging policy issues
  - Activities to support ECE



? ? ?

Closing Questions or Comments?



# Closing



**Manuel Fierro, Chair**

[MFierro@catalystcalifornia.org](mailto:MFierro@catalystcalifornia.org)

**Andrea Fernandez Mendoza, Vice Chair**

[andrea@californiachildrensacademy.org](mailto:andrea@californiachildrensacademy.org)

**Debra Colman, OAECE Director**

[dcolman@ph.lacounty.gov](mailto:dcolman@ph.lacounty.gov)

[childcare.lacounty.gov](http://childcare.lacounty.gov)

